

# bimed Cable Entry System

## Overview

### Cable Entry System - BRM Series

The BRM cable entry system allows non-terminated cables to be installed through an enclosure or other bulkhead surfaces, allowing for a high density of cables to pass through a small area. The BRM Series is a one-piece system that enables the quick and simple installation of up to 29 cables in a single frame. The Ultra-flexible entrance membrane ensures ingress protection for a large range of cable diameters.



## Features

- Available in 1 frame size
- Quick and easy to install
- Bolt-in or snap-in mounting
- Integrated strain relief
- Fits standard cut-out dimensions
- High protection class IP65, UL Type 12,13, 4X
- 2-year warranty
- Operating temperature: -40 to 176°F [-40 to 80°C]
- Flammability: HB (According to UL94)
- Halogen-free

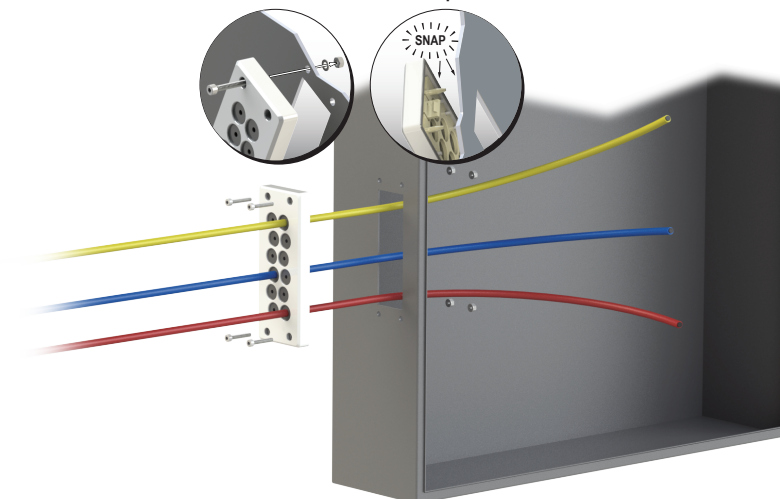
## Agency Approvals

- cURus, meets UL508A under File E467237

### Two Ways to Mount

Bolt-In

Snap-In



# bimed Cable Entry System

## Frames - BRM Series

The BRM Series Frames allow non-terminated cables to be installed through an enclosure or other bulkhead surfaces, allowing for a high density of cables to pass through a small area. A special back sealing design ensures "close fit" even if a cable is removed. This unique feature allows a cable to be inserted and removed as needed.

Frames - BRM Series						
Part Number	Price	Qty	Number Of Openings	Color	Drawing Link	Material
<a href="#">BRM00-1</a>	\$8.75	1	0	Gray	<a href="#">PDF</a>	Frame: PA Glass Fiber Reinforced  Seal: Butyl (IIR) Rubber
<a href="#">BRM00-2</a>	\$8.75		0	Black	<a href="#">PDF</a>	
<a href="#">BRM12-1</a>	\$19.00		(12) 4.0 to 13.0 mm	Gray	<a href="#">PDF</a>	
<a href="#">BRM12-2</a>	\$19.00		(12) 4.0 to 13.0 mm	Black	<a href="#">PDF</a>	
<a href="#">BRM14-1</a>	\$19.00		(14) 5.0 to 11.0 mm	Gray	<a href="#">PDF</a>	
<a href="#">BRM14-2</a>	\$19.00		(14) 5.0 to 11.0 mm	Black	<a href="#">PDF</a>	
<a href="#">BRM22-1</a>	\$19.00		(16) 3.0 to 6.5 mm (4) 5.0 to 9.2 mm (2) 8.0 to 12.5 mm	Gray	<a href="#">PDF</a>	
<a href="#">BRM22-2</a>	\$19.00		(16) 3.0 to 6.5 mm (4) 5.0 to 9.2 mm (2) 8.0 to 12.5 mm	Black	<a href="#">PDF</a>	
<a href="#">BRM23-1</a>	\$19.00		(23) 4.0 to 8.5 mm	Gray	<a href="#">PDF</a>	
<a href="#">BRM23-2</a>	\$19.00		(23) 4.0 to 8.5 mm	Black	<a href="#">PDF</a>	
<a href="#">BRM29-1</a>	\$19.00		(29) 4.0 to 7.0 mm	Gray	<a href="#">PDF</a>	
<a href="#">BRM29-2</a>	\$19.00		(29) 4.0 to 7.0 mm	Black	<a href="#">PDF</a>	

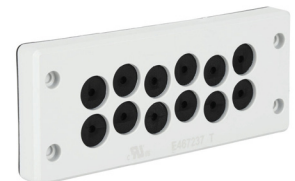
Note: Mounting hardware is included with frames. Screw size: M4x0,7x20 mm fitted with M3 Allen Head [0.40 Nm]



[BRM00-1](#)



[BRM00-2](#)



[BRM12-1](#)



[BRM12-2](#)



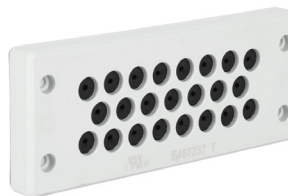
[BRM14-1](#)



[BRM14-2](#)



[BRM22-1](#)



[BRM23-1](#)



[BRM29-1](#)



[BRM22-2](#)



[BRM23-2](#)



[BRM29-2](#)