

# Polycarbonate Pushbutton Enclosures – Commander Series

NEMA 1, 3R, 4X, 6P, and 12 with Lift-off Cover



[COPC432](#)



[COPC1PB](#)



[COPC2PB](#)

## Applications

AttaBox offers an all-polycarbonate product with blank covers or a choice of one- or two-hole pushbutton openings for both 22mm and 30mm hardware. These enclosures include the external flush wall design, unobstructed internal sidewalls, polycarbonate cover screws, and watertight seal.

## Construction

- High impact-resistant polycarbonate, gray in color with gloss finish
- Poured-in-place seamless gasket for water-tight and dust-tight seal
- Mounting wells located under the cover/ outside the gasket area
- Removable cover with polycarbonate screws (provided). Torque cover screws to 16 lb-in (1.8 N-m)
- Rounded edges help to prevent collection of dust and debris
- Available with 22mm or 30mm pushbutton holes, or blank cover

## Listings

- UL/cUL File # E319779
- NEMA Ratings 1, 3R, 4X, 6P, and 12
- [UL508A, UL50 and UL50e]
- IEC 60529 Ratings IP66, IP67, IP68
- Temperature Range (-20°F to +240°F) (-29°C to +115°C)
- Flammability Rating UL94-5VA
- Certifications cULus, IEC, REACH, RoHS
- Outdoor UV Exposure (UL 746C) (f1) Rated



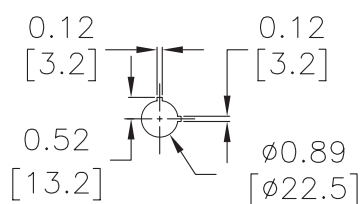
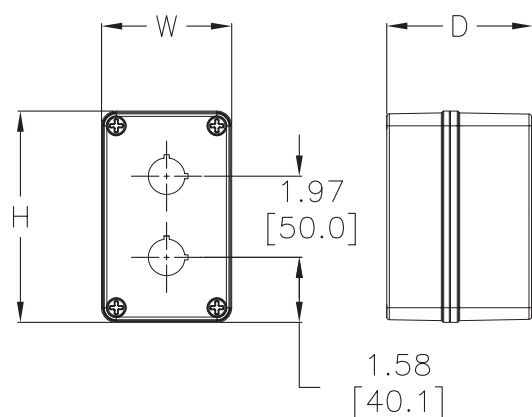
## Polycarbonate Pushbutton Enclosures – Commander Series NEMA 1, 3R, 4X, 6P, and 12

| Part Number                      | Price   | # Holes | Pushbutton Size | Enclosure Size H x W x D<br>inches [millimeters] |
|----------------------------------|---------|---------|-----------------|--|
| <u><a href="#">COPC432</a></u>   | \$63.00 | 0       | —               | 4.34 x 3.16 x 2.79 [110 x 80 x 71]               |
| <u><a href="#">COPC533</a></u>   | \$65.00 | 0       | —               | 5.12 x 3.16 x 3.54 [130 x 80 x 90]               |
| <u><a href="#">COPC1PB</a></u>   | \$69.00 | 1       | 30mm            | 4.34 x 3.16 x 2.79 [110 x 80 x 71]               |
| <u><a href="#">COPC2PB</a></u>   | \$75.00 | 2       | 30mm            | 5.12 x 3.16 x 3.54 [130 x 80 x 90]               |
| <u><a href="#">COPC1PB22</a></u> | \$69.00 | 1       | 22mm            | 4.34 x 3.16 x 2.79 [110 x 80 x 71]               |
| <u><a href="#">COPC2PB22</a></u> | \$75.00 | 2       | 22mm            | 5.12 x 3.16 x 3.54 [130 x 80 x 90]               |

# Polycarbonate Pushbutton Enclosures – Commander Series

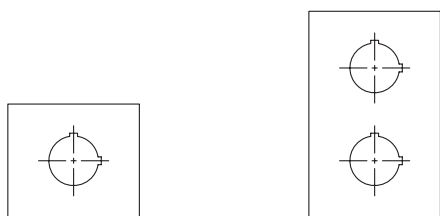
NEMA 1, 3R, 4X, 6P, and 12 with Lift-off Cover

## Dimensions



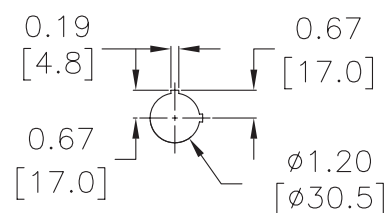
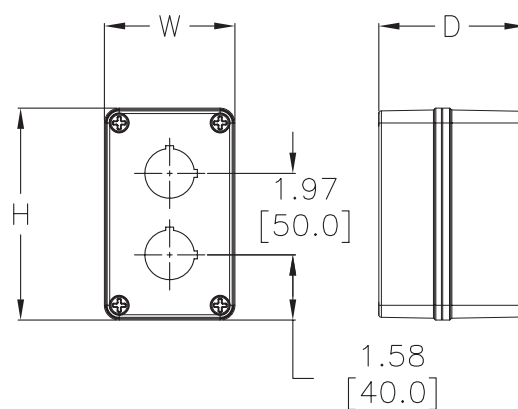
1PB-22/2PB-22  
HOLE DETAIL

PB HOLE ARRANGEMENTS



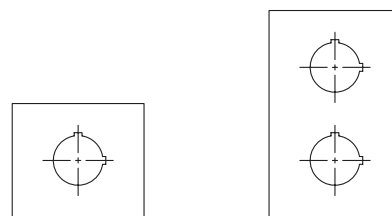
SINGLE PB-22

DOUBLE PB-22



1PB/2PB  
HOLE DETAIL

PB HOLE ARRANGEMENTS



SINGLE PB

DOUBLE PB