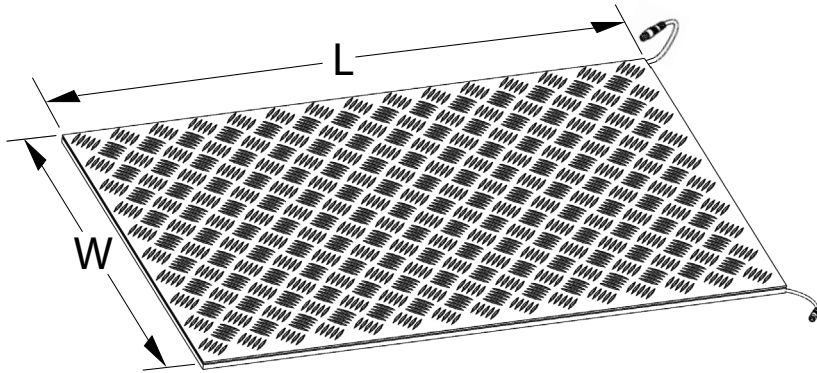


# ASO Safety Solutions

## SENTIR Diamond Plate

### Straight Edge Safety Contact Mats



SENTIR safety contact mats are rectangular sections which are used to safeguard dangerous areas in industrial and production automation settings. Stepping on the mat triggers an immediate "stop" signal in order to prevent endangering movements.

SENTIR Straight Edge mats are designed with flexibility in mind. Two quick-disconnect ends allow for easy single or multi-mat wiring in either 2-wire or 4-wire circuits with optional terminating resistor. The straight edge allows butting of additional mats and use of optional metal trim kits for securing to the floor.

### Features

- Diamond plate sheet included to protect in harsh conditions
- Straight edge ideal for trim kits and multi-mat configurations
- Ideal for 2-wire circuits with optional terminating resistor
- Can wire in 2-wire or 4-wire circuits
- Male and female quick disconnect
- Two sizes available
- Resistant to most contaminants and moisture up to IP65



**2-wire**

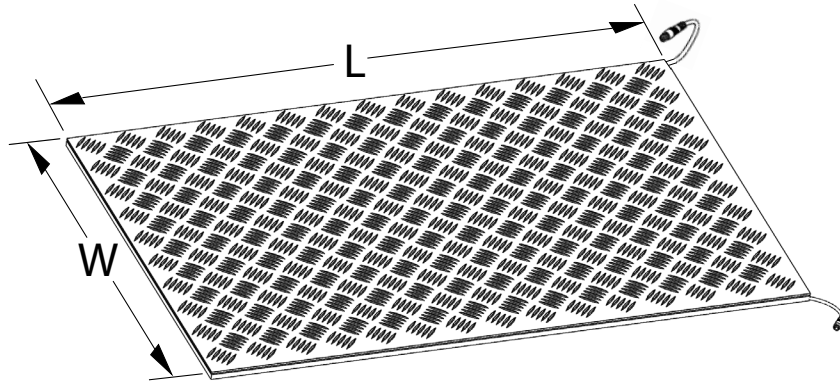
Terminator  
Part # 1810-0190

Relay

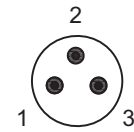
**4-wire**

Relay

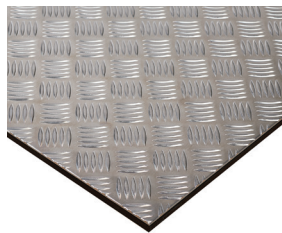
# ASO Safety Solutions SENTIR Diamond Plate Straight Edge Safety Contact Mats



M8 Connector



Use pins 1 and 3 for continuity.  
(See safety relay for wiring)



**1602-4540**

ASO Safety Solutions Contact Mats - Straight Edge Style							
Part Number	Price	Width (W)	Length (L)	Operating Voltage	Cable Length	Connection Cables	Drawing
<a href="#">1602-4540</a>	\$574.00	24in [609.6 mm]	36in [914.4 mm]	24VDC, 100mA	There are two cables; each is 4.7 inches [120mm] in length	One cable has a 3-pin male M8 connector, and the other cable has a 3-pin female M8 connector	<a href="#">PDF</a>
<a href="#">1602-4550</a>	\$695.00	24in [609.6 mm]	48in [1219.2 mm]				<a href="#">PDF</a>



**1810-0190**

ASO Safety Solutions Terminating Resistors					
Part Number	Price	Description	Use With	Contents	Drawing
<a href="#">1810-0190</a>	\$8.75	Terminating resistor, 8.2 k ohm, 3-pin male M8 connector	Safety contact mats and bumpers	1 resistor	<a href="#">PDF</a>

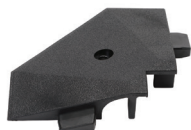


**2010-0080**

ASO Safety Contact Mat Trim Kits and Corners						
Part Number	Price	Description	Material	Use With	Contents	Drawing
<a href="#">2010-0080</a>	\$97.00	Trim kit	Aluminum	24 x 36 in safety mats	4 trim corners and 4 mat trim pieces	<a href="#">PDF</a>
<a href="#">2010-0081</a>	\$107.00	Trim kit	Aluminum	24 x 48 in safety mats	4 trim corners and 4 mat trim pieces	<a href="#">PDF</a>
<a href="#">2010-0086</a>	\$56.00	Mat trim	Aluminum	Safety contact mats	1 mat trim, 5ft [1524mm] length	<a href="#">PDF</a>
<a href="#">2010-0087</a>	\$3.75	Trim corner	Polyamide	Safety contact mats	1 corner	<a href="#">PDF</a>



**2010-0086**



**2010-0087**

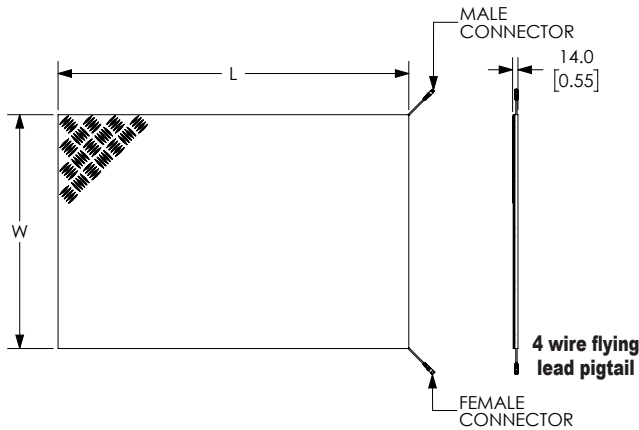
Straight Edge Safety Contact Mats	
	General Specifications
Height	14mm [0.55 in] with covering
Material	Polyurethane and aluminum diamond plate surface
Weight	31.5 kg/m <sup>2</sup> [6.45 lb/ft <sup>2</sup> ]
Switching Pressure	Test piece Ø 80mm [3.15 in] = approximately 150N
Inactive Edge	30mm [1.18 in] without optional trim installed 40mm [1.57 in] with optional trim installed
Static Load	Max. 2,000N on Ø 80mm [3.15 in], tested according to DIN EN ISO 13856-1
Response Time	< 25ms, tested according to DIN EN ISO 13856-1
Electrical Capacity	24VDC, 100mA
Mechanical Life	>1,000,000 cycles
Protection Class	IP65
Temperature Range	-20° to +55°C [-4° to +131°F]
Agency Approvals	CE, cULus file E329422

# ASO Safety Solutions SENTIR Diamond Plate Straight Edge Safety Contact Mats

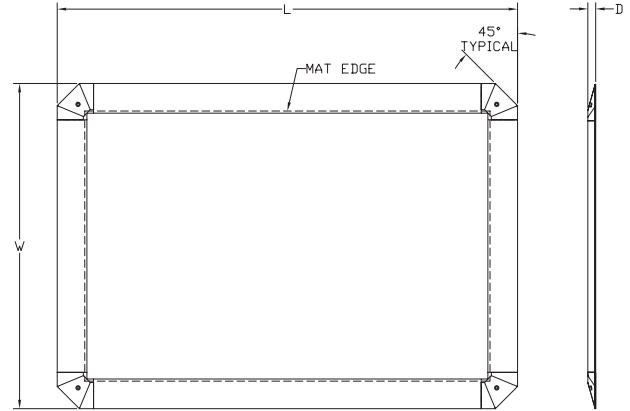
## Dimensions

mm [in]

### Contact Mats - Straight Edge (1602-41XX)



### Trim Kits (2010-008X)



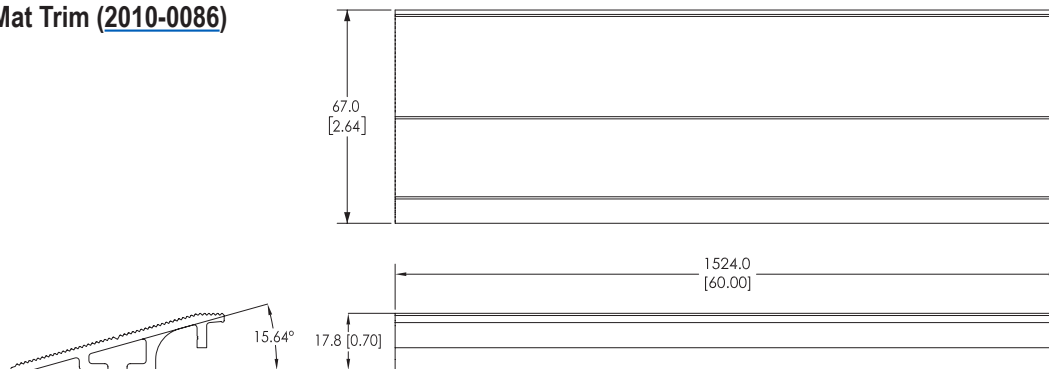
### Part Information – Contact Mats (Straight Edge)

Part number	W mm (in)	L mm (in)	D mm (in)
<b>1602-4540</b>	609.6 (24)	914.4 (36)	14 (0.55)
<b>1602-4550</b>		1219.2 (48)	

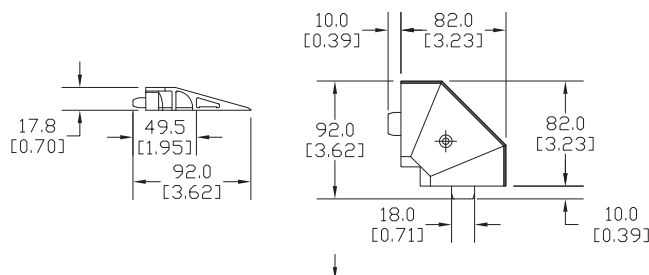
### Part Information – Trim Kits

Part number	W mm (in)	L mm (in)	D mm (in)
<b>2010-0080</b>	733.5 (28.88)	1038.3 (40.88)	17.8 (0.70)
<b>2010-0081</b>		1343.1 (52.88)	

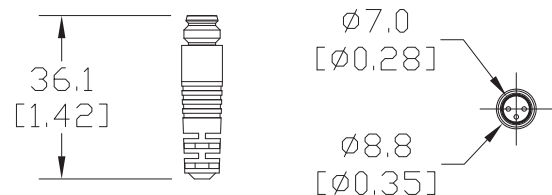
### Mat Trim (2010-0086)



### Trim Corner (2010-0087)



### Terminating Resistor (1810-0190)



See our website: [www.AutomationDirect.com](http://www.AutomationDirect.com) for complete Engineering Drawings.

# Safety Products



*Warning: Safety products sold by AutomationDirect are Safety components only. The purchaser/installer is solely responsible for the application of these components and ensuring all necessary steps have been taken to assure each application and use meets all performance and applicable safety requirements and/or local, national and/or international safety codes as required by the application. AutomationDirect cannot certify that our products, used solely or in conjunction with other AutomationDirect or other vendors' products, will assure safety for any application. Any person using or applying any products sold by AutomationDirect is responsible for learning the safety requirements for their individual application and applying them, and therefore assumes all risks, and accepts full and complete responsibility, for the selection and suitability of the product for their respective application.*

*AutomationDirect does not provide design or consulting services, and cannot advise whether any specific application or use of our products would ensure compliance with the safety requirements for any application.*