

# Solid Core AC Current Transformers

The AcuAMP line of Solid Core Instrumentation Grade Electrical Current Transformers is available in Commercial Class. These Commercial Class transformers are lower cost and well-suited for current monitoring applications. Two different window openings and two mounting styles along with numerous secondary ratios are available to meet most applications.

## Features

- Low cost
- Core secured with epoxy resin
- Hand-tuned accuracy

## Applications

- Ammeters
- Energy measurement
- Watt/VAR/Watt-hour measurement (for use with Socomec Diris and Trumeter panel meters)
- Current sensing relays

### 5A Secondary Current Transformers

Part Number	Price	Ratio	Weight	Output	Solid Core Case Style	Sensing Window
<a href="#">CTF-5RL-0050</a>	\$26.00	50:5	1.00 lb (0.45 kg)	5A Secondary	RL	1.56 in (39.6 mm)
<a href="#">CTF-5RL-0100</a>	\$26.00	100:5				
<a href="#">CTF-5RL-0150</a>	\$26.00	150:5				
<a href="#">CTF-5RL-0200</a>	\$26.00	200:5				
<a href="#">CTF-5RL-0400</a>	\$26.00	400:5				
<a href="#">CTF-5SFT-0050</a>	\$27.50	50:5	1.10 lb (0.50 kg)		SFT	1.56 in (39.6 mm)
<a href="#">CTF-5SFT-0100</a>	\$27.50	100:5				
<a href="#">CTF-5SFT-0150</a>	\$27.50	150:5				
<a href="#">CTF-5SFT-0200</a>	\$27.50	200:5				
<a href="#">CTF-5SFT-0400</a>	\$27.50	400:5				
<a href="#">CTF-7RL-0400</a>	\$48.50	400:5	1.55 lb (0.70 kg)		RL	2.50 in (63.5 mm)
<a href="#">CTF-7RL-0600</a>	\$48.50	600:5				
<a href="#">CTF-7RL-0800</a>	\$60.00	800:5				
<a href="#">CTF-7RL-1000</a>	\$60.00	1000:5				
<a href="#">CTF-7SFT-0400</a>	\$50.00	400:5	1.75 lb (0.80 kg)	SFT	2.50 in (63.5 mm)	
<a href="#">CTF-7SFT-0600</a>	\$50.00	600:5				
<a href="#">CTF-7SFT-0800</a>	\$60.00	800:5				
<a href="#">CTF-7SFT-1000</a>	\$66.00	1000:5				

### CTF-5 Series



CTF-5RL-xxxx



CTF-5SFT-xxxx

### CTF-7 Series



CTF-7RL-xxxx

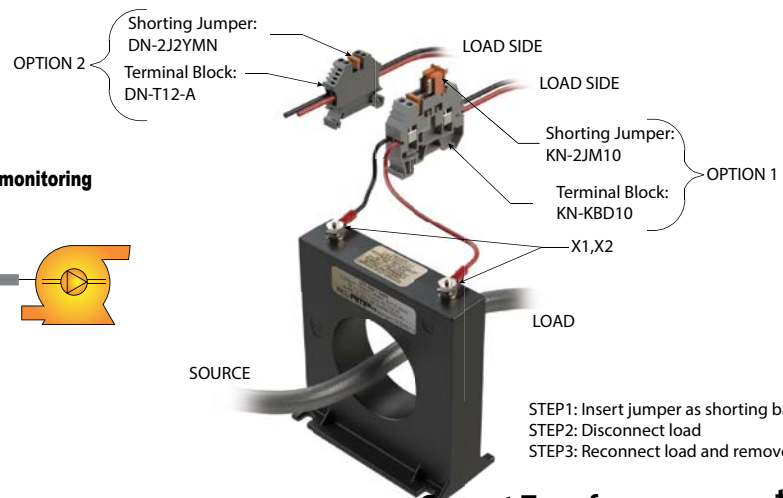
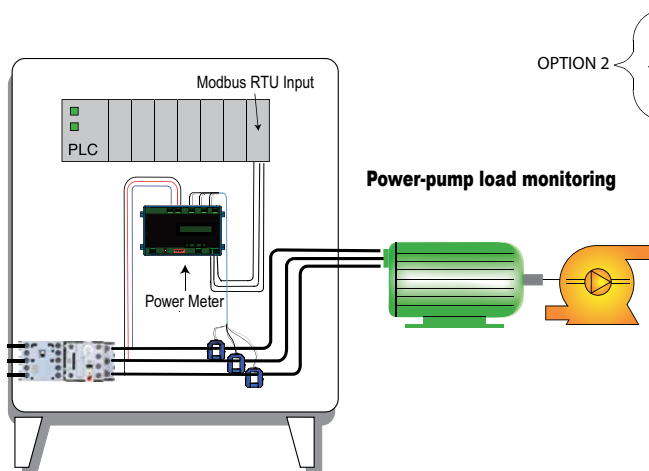


CTF-7SFT-xxxx



## Connecting A Current Transformer

A current transformer (CT) should never be energized (AC current through the sensing window) without a load connected to the secondary output terminals (X1, X2). Best practice is to terminate the current transformer secondary on a terminal block with the ability to short between two points before extending the leads to the load. If it is ever necessary to remove the load from the CT while it is or could become energized, a shorting bar can be placed between the secondary leads, as shown in the illustration below. This will allow the leads to be removed safely.



# Solid Core AC Current Transformers



Specifications (CTF-5RL-xxxx and CTF-5SFT-xxxx)					
Models	CTF-5RL-0050 CTF-5SFT-0050	CTF-5RL-0100 CTF-5SFT-0100	CTF-5RL-0150 CTF-5SFT-0150	CTF-5RL-0200 CTF-5SFT-0200	CTF-5RL-0400 CTF-5SFT-0400
Power supply	Self-powered				
Current range (A)	50	100	150	200	400
Output signal	0 to 5A (AC)				
Frequency range	50-400 Hz (UL tested at 60Hz only)*				
Primary circuit voltage	600VAC				
Temperature range	-20° to +75°C [-4° to +167°F]				
Secondary terminal wire range	22-14 AWG				
Secondary connections	RL: 16 AWG conductors, 24in (61cm) long SFT: M4x0.70 threaded terminal stud, use #8 (M4) ring terminal – Terminal torque 10 lb-in [1.13 N·m]				
Current ratio	50:5	100:5	150:5	200:5	400:5
Accuracy @ 60Hz	±2%		±1%		
Burden VA @ 60Hz	1.0	2.0	5.0	5.0	12.5
Continuous thermal rating factor (RF) @ 30°C	1.0				
Core type	Fixed/Solid Core				
Mounting	RL: pass-through conductor mounting; SFT: panel mounting				
Approvals	UL recognized file E488023. Meets IEEE C57.13 and IEEE C57.13.2, CE Certified				

Specifications (CTF-7RL-xxxx and CTF-7SFT-xxxx)				
Models	CTF-7RL-0400 CTF-7SFT-0400	CTF-7RL-0600 CTF-7SFT-0600	CTF-7RL-0800 CTF-7SFT-0800	CTF-7RL-1000 CTF-7SFT-1000
Power supply	Self-powered			
Current range (A)	400	600	800	1000
Output signal	0 to 5A (AC)			
Frequency range	50-400 Hz (UL tested at 60Hz only)*			
Primary circuit voltage	600VAC			
Temperature range	-20° to +75°C [-4° to +167°F]			
Secondary terminal wire range	22-14 AWG			
Secondary connections	RL: 16 AWG conductors, 24in (61cm) long SFT: M4x0.70 threaded terminal stud, use #8 (M4) ring terminal – Terminal torque 10 lb-in [1.13 N·m]			
Current ratio	400:5	600:5	800:5	1000:5
Accuracy @ 60Hz	±1%			
Burden VA @ 60Hz	15	30	35	30
Continuous thermal rating factor (RF) @ 30°C	1.0			
Core type	Fixed/Solid Core			
Mounting	RL: pass-through conductor mounting; SFT: panel mounting			
Approvals	UL recognized file E488023. Meets IEEE C57.13 and IEEE C57.13.2, CE Certified			

\*Not for use with variable frequency drives.

Note: RF = the maximum current at which a CT can operate continuously without exceeding the thermal limits of its insulation.

To obtain the most current agency approval information, see the Agency Approval Checklist section on the specific part number's web page.

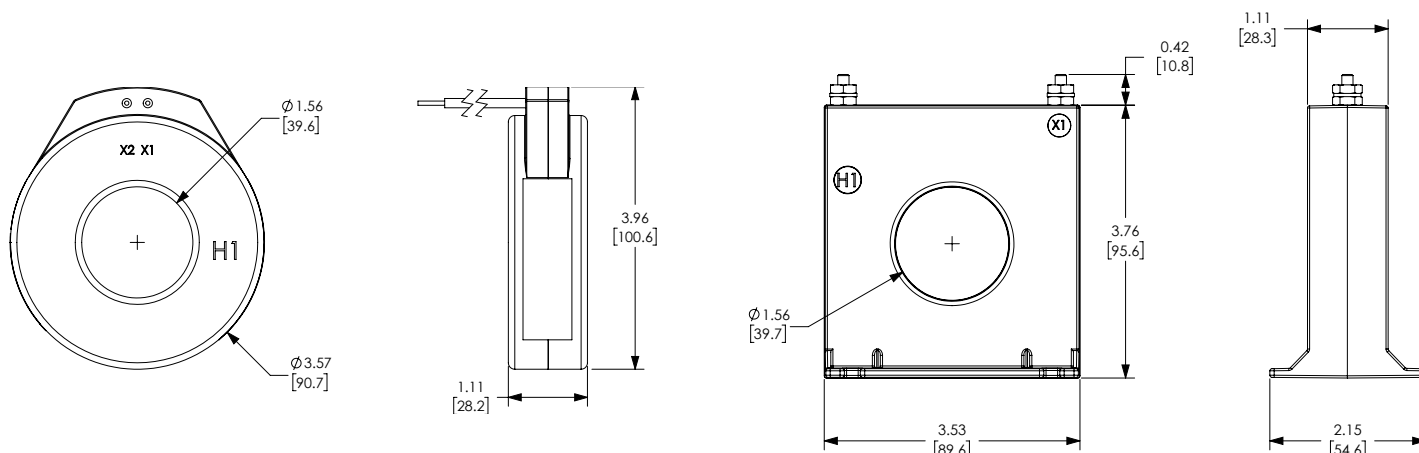
# Solid Core AC Current Transformers



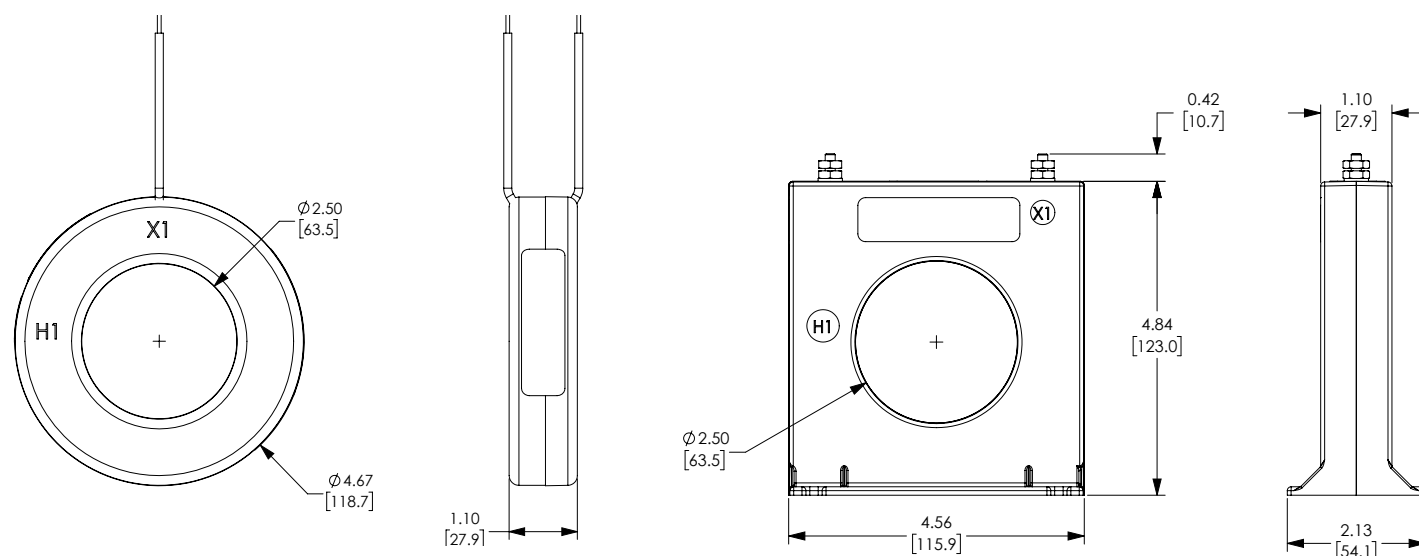
## Dimensions

Inches [mm]

### CTF-5 Series



### CTF-7 Series



See our website: [www.AutomationDirect.com](http://www.AutomationDirect.com) for complete engineering drawings