

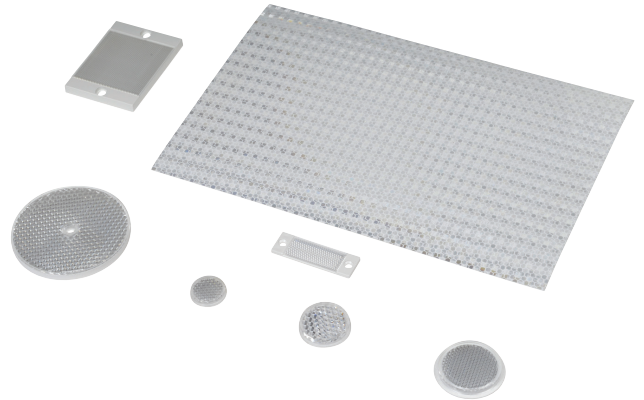
# Reflectors

## RL Series Reflectors for Polarized Reflective Photoelectric Sensors (All Models)

- Suitable for use with polarized light photoelectric sensors
- Shapes and sizes for most applications
- Miniature types for close mounting in multiple sensor installations
- Single hole, dual hole and self-adhesive mounting types available
- Single and 10-packs available

## Installation Notes

- Keep the reflector surface clean to ensure peak detection performance. This is especially true when the maximum sensing range is being used. Clean using a damp cloth.
- When selecting a reflector, it is important to consider the ambient conditions it will be exposed to. Dusty or high humidity conditions may reduce the sensing range as much as 90%.
- Reflectors should be positioned at a 90° angle to the optical axis with a tolerance of  $\pm 15^\circ$ .



| Reflector Specifications |         |                     |          |                    |                      |  |   |
|--------------------------|---------|---------------------|----------|--------------------|----------------------|--|---|
| Part number              | Price   | Drawing Link        | Quantity | Dimensions mm [in] | Degree of Protection | Mounting   | Materials   |
| <a href="#">RL102</a>    | \$38.00 | <a href="#">PDF</a> | 10       | 25                 | IEC IP67             | Customer-supplied adhesive or other mounting method required | Reflective face: PMMA<br>Polymethylmethacrylate (acrylic)<br><br>Base material: ABS<br>(Acrylonitrile-butadiene-styren) |
| <a href="#">RL102-1</a>  | \$4.25  |                     | 1        | [0.98]             |                      |  |   |
| <a href="#">RL103</a>    | \$42.50 | <a href="#">PDF</a> | 10       | 34.5               |                      |  |   |
| <a href="#">RL103-1</a>  | \$4.75  |                     | 1        | [1.36]             |                      |  |   |
| <a href="#">RL104</a>    | \$42.50 | <a href="#">PDF</a> | 10       | 46                 |                      |  |   |
| <a href="#">RL104-1</a>  | \$4.75  |                     | 1        | [1.81]             |                      |  |   |
| <a href="#">RL105G</a>   | \$38.00 | <a href="#">PDF</a> | 10       | 95 x 38            |                      | Two 4.3 mm holes   |   |
| <a href="#">RL105G-1</a> | \$4.25  |                     | 1        | [3.74 x 1.50]      |                      |  |   |
| <a href="#">RL106G</a>   | \$42.50 | <a href="#">PDF</a> | 10       | 182 x 42           |                      | Two 6mm holes  |   |
| <a href="#">RL106G-1</a> | \$4.75  |                     | 1        | [7.17 x 1.65]      |                      |  |   |
| <a href="#">RL110</a>    | \$19.00 | <a href="#">PDF</a> | 10       | 84                 |                      | One 5mm hole   |   |
| <a href="#">RL110-1</a>  | \$2.00  |                     | 1        | [3.31]             |                      |  |   |
| <a href="#">RL116</a>    | \$19.00 | <a href="#">PDF</a> | 10       | 41 x 60            |                      | Two 3mm holes  |   |
| <a href="#">RL116-1</a>  | \$2.00  |                     | 1        | [3.54 x 2.36]      |                      |  |   |
| <a href="#">RL100DA4</a> | \$38.50 | NA                  | 1        | 200 x 300          |                      | Self-adhesive  | Paper (Acrylic tape with micro prism)   |
| <a href="#">RL100DC4</a> | \$12.00 | NA                  | 1        | 50 x 300           |                      |  |   |
| <a href="#">RL100DQ1</a> | \$8.75  | NA                  | 1        | 100 x 100          |                      |  |   |
| <a href="#">RL111G</a>   | \$60.00 | <a href="#">PDF</a> | 10       | 22.5 x 47          |                      | Two 3mm slots  | Reflective face: PMMA<br>Polymethylmethacrylate (acrylic)<br><br>Base material: ABS<br>(Acrylonitrile-butadiene-styren) |
| <a href="#">RL111G-1</a> | \$7.25  |                     | 1        | [0.89 x 1.85]      |                      |  |   |
| <a href="#">RL112G</a>   | \$44.00 | <a href="#">PDF</a> | 10       | 19 x 73            |                      |  |   |
| <a href="#">RL112G-1</a> | \$4.75  |                     | 1        | [0.75 x 2.87]      |                      |  |   |
| <a href="#">RL113G</a>   | \$53.00 | <a href="#">PDF</a> | 10       | 51.4 x 60.3        |                      | Two 4mm slots  |   |
| <a href="#">RL113G-1</a> | \$6.00  |                     | 1        | [2.02 x 2.37]      |                      |  |   |

Not recommended for applications involving moist air environments or water immersion.

# Reflectors

## RL Series Reflectors for Polarized Reflective Laser Photoelectric Sensors (FALN series)

- Suitable for use with polarized light laser photoelectric sensors
- Sizes for most applications
- Miniature types for close mounting in multiple sensor installations
- Single and 5-packs available

| Specifications                    |                              |                                |                              |                                |                                  |                                |
|-----------------------------------|------------------------------|--------------------------------|------------------------------|--------------------------------|----------------------------------|--------------------------------|
| Part Number                       | <a href="#"><i>RL201</i></a> | <a href="#"><i>RL201-1</i></a> | <a href="#"><i>RL203</i></a> | <a href="#"><i>RL203-1</i></a> | <a href="#"><i>RL204</i></a>     | <a href="#"><i>RL204-1</i></a> |
| Price                             | \$38.00                      | \$8.25                         | \$35.50                      | \$7.75                         | \$30.00                          | \$6.75                         |
| Quantity                          | 5                            | 1                              | 5                            | 1                              | 5                                | 1                              |
| Drawing Link                      | <a href="#">PDF</a>          |                                | <a href="#">PDF</a>          |                                | <a href="#">PDF</a>              |                                |
| Dimensions                        | 60 x 82 mm<br>2.36 x 3.23 in |                                | 19 x 6mm<br>0.75 x 2.36 in   |                                | 20mm x 32mm<br>0.80 in x 1.26 in |                                |
| Degree of Protection <sup>1</sup> | IEC IP67                     |                                |                              |                                |                                  |                                |
| Mounting                          | Two 0.4 mm holes             |                                | Two 0.4 mm holes             |                                | Two 0.3 mm holes                 |                                |
| Materials                         | Acrylic/polycarbonate        |                                |                              |                                |                                  |                                |

<sup>1</sup> Not recommended for applications involving moist air environments or water immersion.

# Reflectors

## Reflectors for Photoelectric Laser Sensors

| Reflectors for OPT Series Photoelectric Sensors |         |  |                     |               |
|---|---------|--|---------------------|---------------|
| Part Number                                     | Price   | Description  | Drawing Link        | Weight lb [g] |
| <a href="#">OPT2030</a>                         | \$14.00 | Reflector, square, 100 x 100mm. For use with photoelectric laser sensors.    | <a href="#">PDF</a> | 0.20 [90.71]  |
| <a href="#">OPT2167</a>                         | \$13.50 | Wenglor reflector, rectangular, 61 x 51.5mm. For use with OPT2137 & OPT2138. | <a href="#">PDF</a> | 0.03 [13.60]  |

Note: [OPT2015](#) requires purchase of [OPT2030](#) reflector. <50m sensing distance requires 1 reflector. 50–100 m sensing distance requires 4 reflectors.



[OPT2167](#)



[OPT2030](#)