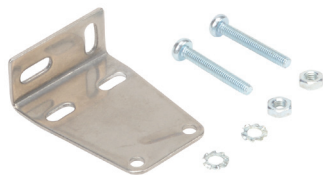


Accessories for QM and FM Series Photoelectric Sensors

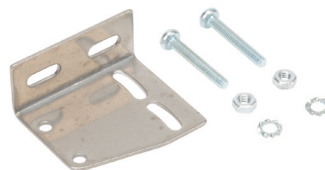
Right-angle Mounting Brackets

Mounting bracket, right-angle vertical, 304 stainless steel. For use with QM & FM series photoelectric sensors. Mounting hardware included.

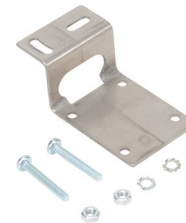
Accessories for QM and FM Series Photoelectric Sensors				
Part Number	Price	Description	Drawing Link	Weight [lb]
<u>ST101</u>	\$3.00	Micro Detectors mounting bracket, right-angle vertical, 304 stainless steel. For use with QM & FM series photoelectric sensors. Mounting hardware included.	<u>PDF</u>	0.04
<u>ST102</u>	\$3.00	Micro Detectors mounting bracket, right-angle horizontal, 304 stainless steel. For use with QM & FM series photoelectric sensors. Mounting hardware included.	<u>PDF</u>	0.05
<u>ST104</u>	\$4.50	Micro Detectors mounting bracket, protective horizontal, 304 stainless steel. For use with prewired QM & FM series photoelectric sensors only. Mounting hardware included.	<u>PDF</u>	0.05



[ST101](#)



[ST102](#)



[ST104](#)