

WAGO Splicing Connectors

Splicing Connectors 2773 Series PUSHWIRE®

Overview

Push your way to fast and reliable connections. The 2773 series uses WAGO's PUSHWIRE® technology to offer a compact and safe way to connect solid and stranded conductors. The compact, clear choice for any wire splicing connection.

Features

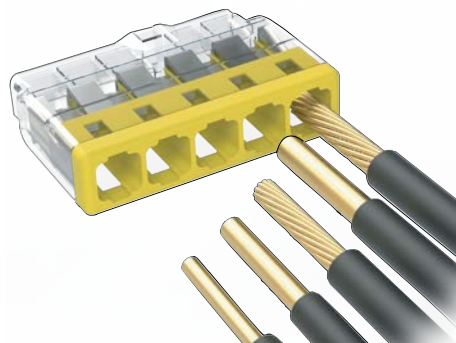
- No twisting, crimping, or taping required
- Takes less time to terminate wires
- Compact design reduces a box fill
- One spring per conductor provides independent contact force against a copper current bar
- You can mix solid and stranded wire types
- Copper conductors only
- With the transparent body, it is easy to inspect the strip length and verify the conductor is completely inserted
- 2-year warranty



PUSHWIRE® Technology

The 2773 series utilize the PUSHWIRE® technology. Simply push a conductor into the unit – and you are done!

Rigid conductors, such as solid, stranded, and ferruled, and fine-stranded conductors can be terminated by simply pushing them in – no operating tool needed.



WAGO Splicing Connectors

Splicing Connectors 2773 Series PUSHWIRE®

**2773-404**

| Splicing Connectors 2773 Series PUSHWIRE® | | | | | | | | |
|---|-----|---------|--|--------------------|-------------------|-------------------|------------------|---------------------|
| Part Number | Qty | Price | Wire Range | Number of Openings | Number of Commons | Strip Length | Wiring Direction | Drawing Link |
| 20 Amp Models | | | | | | | | |
| 2773-402 | 120 | \$13.00 | 0.75-4mm ² [20-12 AWG] Solid 1.5-4mm ² [18-12 AWG] Stranded | 2 | 1 | 13mm [0.51 in] | Side-Entry | PDF |
| 2773-403 | 100 | \$11.00 | | 3 | | | | PDF |
| 2773-404 | 80 | \$9.00 | | 4 | | | | PDF |
| 2773-405 | 60 | \$8.00 | | 5 | | | | PDF |
| 2773-406 | 50 | \$10.00 | | 6 | | | | PDF |
| 2773-408 | 40 | \$8.00 | | 8 | | | | PDF |

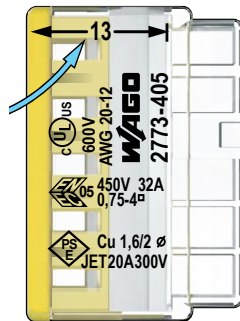
| Splicing Connectors Specifications 2773 Series PUSHWIRE® | | | | | | |
|--|---|--------------------------|--------------------------|--------------------------|--------------------------|--------------------------|
| Part Number | 2773-402 | 2773-403 | 2773-404 | 2773-405 | 2773-406 | 2773-408 |
| UL Rated Voltage (per UL 486C) | 600V | | | | | |
| UL Rated Current (per UL 486C) | 20A | | | | | |
| IEC Rated Voltage (per EN 60998) | 450V | | | | | |
| IEC Rated Current (per EN 60998) | 32A | | | | | |
| Temperature Range | Processing temperature: -35 to 60°C [-31 to 140°F] Continuous air temperature: -40 to 105°C [-40 to 221°F] | | | | | |
| Connection Technology | PUSHWIRE® | | | | | |
| Connector Conductor Material | Copper | | | | | |
| Housing Material | Polycarbonate (PC) | | | | | |
| Color - Body | Transparent | | | | | |
| Color - Actuator | White | Orange | Red | Yellow | Gray | Light Gray |
| Flammability Class (per UL94) | V2 | | | | | |
| Weight | 1.1g | 1.6g | 2.1g | 2.6g | 2.6g | 3.4g |
| CE Conformity | CE (EN 60947-1 / EN 60947-7-1) | | | | | |
| Approvals | cULus E69654 / E201573 | | | | | |

WAGO Splicing Connectors

Splicing Connectors 2773 Series PUSHWIRE®

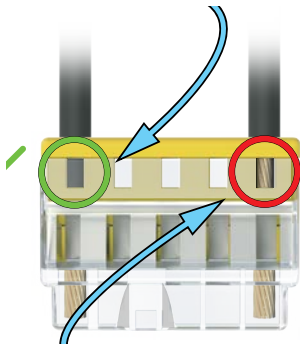
Strip Length Indication
Strip solid or stranded conductor to 13mm [0.51in].

Strip gauge can be found on the side of the connector with the markings.

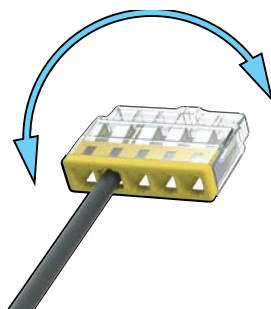


Visual Inspection Window

The visual inspection window ensures a proper termination every time.

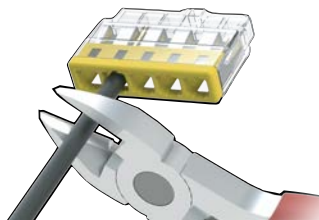


If the conductor is showing in the inspection window, the wire has been stripped incorrectly.



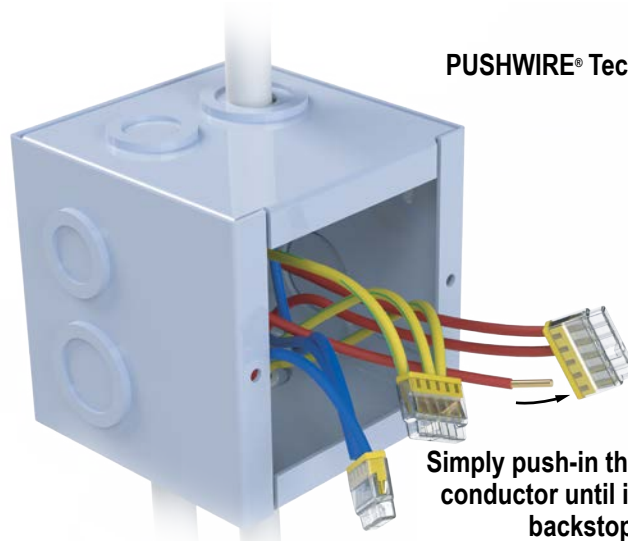
Solid conductor:
Hold wire and twist left and right while pulling the connector.
Approved for reuse.

Conductor Removal

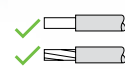


Stranded conductor:
Cut the wire, re-strip, and insert into a new connector.

PUSHWIRE® Technology



Simply push-in the stripped conductor until it hits the backstop.



Different conductor types can be combined.

Low insertion forces with high retention forces for a secure connection.

Built-In Test Port
Test port located opposite the conductor entry for easy access.

