

GETTING STARTED



CHAPTER 1

In This Chapter:

Introduction	1-2
Purpose of this Manual.....	1-2
Purpose of this Chapter.....	1-2
Online Help Files and Other Documentation.....	1-2
Technical Support.....	1-2
Conventions Used	1-3
Key Topics for Each Chapter.....	1-3
Before You Begin	1-4
Do-more T1H Series PLC System Components.....	1-5
Do-more Software System Requirements.....	1-6
Step 1: Install Do-more Designer Software	1-7
Step 2: Launch Do-more Designer Software	1-10
Step 3: Install Hardware	1-12
Step 4: Apply Power to the PLC	1-13
Step 5: Establish Communication	1-14
Step 6: Verify Hardware Configuration	1-20
Step 7: Create a Ladder Logic Program	1-24
Rung #1.....	1-24
Rung #2.....	1-27
Step 8: Save a Project	1-29
Step 9: Write Project to the Do-more T1H Series PLC	1-29
Step 10: Testing Project Using Data View	1-30
Accessing the Help File	1-32

Introduction

Purpose of this Manual

Thank you for purchasing from our Do-more PLC family of products. This manual shows you how to install, set up, program, troubleshoot and maintain your Do-more T1H Series PLC. For installation personnel, this manual contains information on power and signal wiring, mounting details and configuration procedures.

This manual can be very helpful as a quick reference guide for those who are experienced in PLCs. For those who may be new to PLCs or our products, reading this manual will give you an understanding of the variety of features available with the Do-more PLC.

Purpose of this Chapter

This chapter will guide you through the basic set up of a Do-more T1H Series PLC. It contains step by step instructions on installing the programming software, installing and configuring your hardware, applying power to the PLC, establishing a communications link, and creating, saving and writing a project to the CPU. Once these steps are completed, your Do-more T1H Series PLC will be running a ladder logic project that you have programmed.

Online Help Files and Other Documentation

Do-more Designer, the Do-more PLC programming software, is available for free download from our website at:

<http://www.automationdirect.com>

The software includes searchable online help topics covering all aspects of the software, instruction set, module set up and communication.

Technical Support

We strive to make our manuals the best in the industry. We rely on your feedback to let us know if we are reaching our goal. If you cannot find the solution to your particular application, or, if for any reason you need technical assistance, please call us at:

770-844-4200

Our technical support group will work with you to answer your questions. They are available Monday through Friday from 9:00 A.M. to 6:00 P.M. Eastern Time. We also encourage you to visit our web site where you can find technical and non-technical information about our products and our company.

<http://www.automationdirect.com>

Conventions Used




When you see the “note pad” icon in the left-hand margin, the paragraph to its immediate right will be a special note. Notes represent information that may make your work quicker or more efficient. The word **NOTE**: in boldface will mark the beginning of the text.



When you see the “exclamation point” icon in the left-hand margin, the paragraph to its immediate right will be a warning. This information could prevent injury, loss of property, or even death in extreme cases. Any warning in this manual should be regarded as critical information that should be read in its entirety. The word **WARNING** in boldface will mark the beginning of the text.

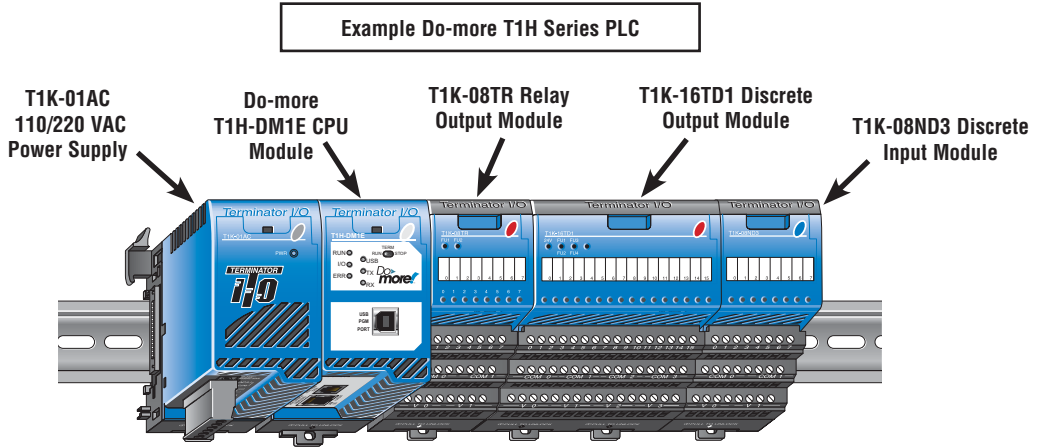
Key Topics for Each Chapter

The beginning of each chapter will list the key topics that can be found in that chapter.

Getting Started!	
	 CHAPTER 1
In This Chapter...	
Introduction	1-2
Purpose of this Manual	1-2
About Getting Started!	1-2
Supplemental Manuals and Other Help	1-2
Technical Support	1-2
Conventions Used	1-3

Before You Begin

It is recommended that the following items be available to make this short step-by-step introduction to the Do-more T1H Series PLC go smoothly.



**PC Running
Windows XP, Vista,
Windows 7, Windows 8**



Not available from
Automationdirect.com.

**Do-more Designer
Programming Software**



Download software from
our website at: <http://www.automationdirect.com>

**USB-A to USB-B
Programming Cable**



You can also use an Ethernet
or Serial (D2-DSCBL) cable
for programming, but we
recommend using a USB cable;
just plug it in and it works.

**Screwdriver
TW-SD-VSL-1**



**Wire Strippers
DN-WS**



Hookup Wire



AC Power Cord



Not available from
Automationdirect.com.

Do-more T1H Series PLC System Components

The Do-more T1H Series CPU modules were designed for use with the Terminator I/O product line. For those not familiar with Terminator I/O, it is a modular system which combines the functions of terminal blocks and I/O modules for distributed I/O. Each Terminator I/O system contains: a Power Supply, a Base Controller, and one or more I/O Module(s). Now with the addition of the T1H CPU, standing in place of the Base Controller, the Terminator distributed I/O system becomes a complete, highly functional, stand-alone PLC system.

CPU

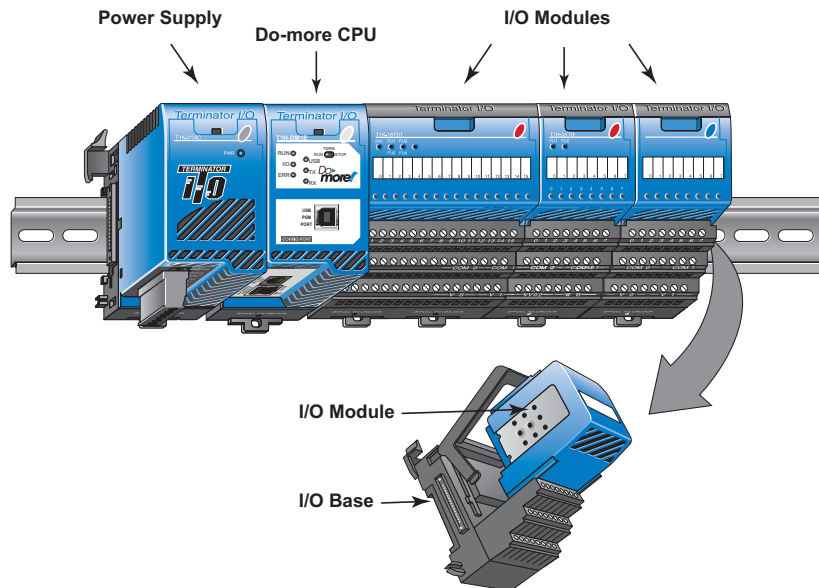
T1H-DM1/T1H-DM1E

Power Supplies

120/240 VAC and 12/24 VDC power supplies are available. The AC version has a built-in 24 VDC supply. A power supply must be the leftmost component in a slave system followed by the CPU. Additional power supplies should be added between I/O modules to meet power budget requirements.

I/O Modules

A Terminator I/O module assembly consists of an I/O module and a separate base, as shown below. A complete range of discrete modules which support 12/24 VDC, 110/220 VAC and up to 7A relay outputs is offered. The analog I/O modules provide 12 and 14 bit resolution and several selections of I/O signal ranges (including bipolar). The temperature input modules provide 16 bit resolution with several temperature input range selections.



Do-more Software System Requirements

The Do-more Designer Windows-based programming software works with Windows® XP (Home or Professional, 32-bit), Vista (Home, Basic, Premium, 32 or 64-bit), Windows 7 (Home, Professional, Ultimate, 32 or 64-bit) or Windows 8 (Home, Professional, Enterprise 32 or 64-bit; Windows 8 RT edition is NOT supported).

Please check the following requirements when choosing your PC configuration:

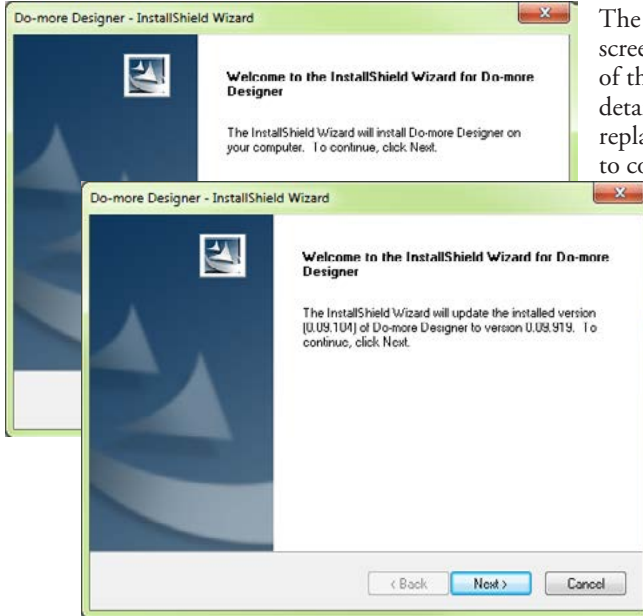
- Minimum PC to PLC Connectivity, at least one of the following:
 - USB Port: connects to the CPU with USB-A connector (USB-A to USB-B cable)
 - RS-232 Serial Port: connects to the CPU with RJ-12 connector (RJ-12 to DB9 or RJ-12 to USB-B serial converter cable)
 - Ethernet Port: connects to the CPU (T1H-DM1E) with RJ-45 10Base-T or 100Base-T (Cat5 Patch Cable)
- Hard Disk: 100MB free disk space
- Video Display: 1024x768, 256 colors resolution (1280x720, true color recommended)
- Windows XP, 32-bit:
 - 800MHz, single core CPU (2GHz, multi-core or hyperthreaded recommended)
 - 512MB RAM (2GB recommended)
- Vista, Windows 7 or Windows 8, 32 or 64-bit:
 - 1GHz, single core CPU (2GHz, multi-core recommended)
 - 1GB RAM (3GB recommended)



NOTE: The PC/Laptop/Ethernet Switch connector at the “opposite end” of the PLC connector will dictate what kind of cable you will need.

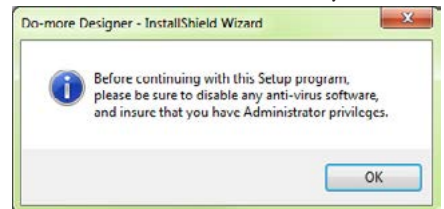
Step 1: Install Do-more Designer Software

Download the Do-more Designer programming software (DM-PGMSW) from our website at <http://automationdirect.com> and launch the install procedure. If you already have Do-more Designer installed, you can just update to version 1.2 or newer to get T1H CPU support.



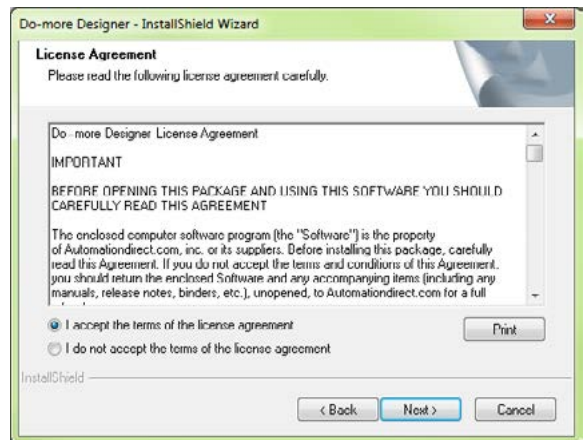
The first screen that opens is the Welcome screen seen here. If there are previous versions of this software already installed, this screen will detail the version number of the software being replaced and the one being installed, click Next to continue.

An alert window will appear requesting that all anti-virus software be disabled and also reminding the user that Administrative restrictions may exist.



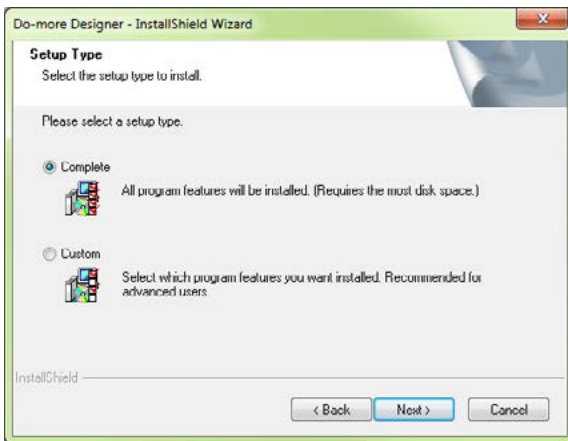
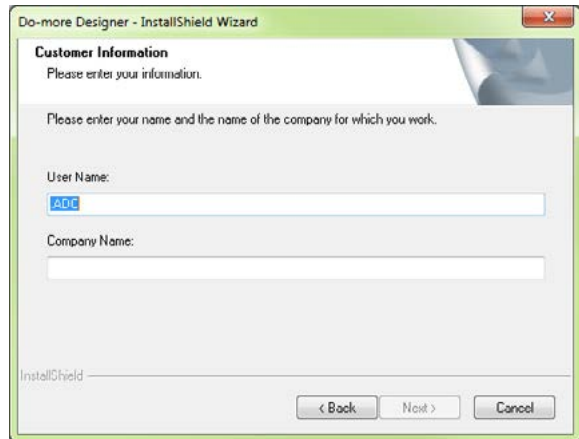
The License Agreement window will be displayed next. Read over the agreement, select “I accept the terms of the license agreement” and click the Next button to continue.

There is also the option to print the license agreement if desired. The print function will print the license agreement to a .pdf file and save it in the location you choose.



Now the software will ask a little about you. Please fill in the information requested on the Customer Information screen and click Next to continue.

At this stage, the software will ask which type of install you would like to perform. The Select Type window seen below gives two options for installation type: Complete and Custom.

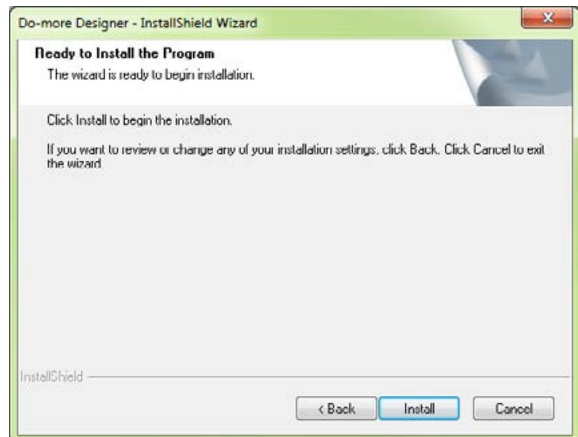


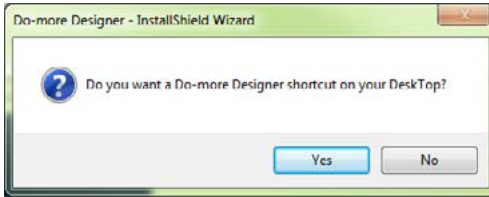
Custom installation allows you to choose which program features to install, whereas Complete installation installs all of the program features available. The Complete installation is selected by default and is recommended for first-time users.

Select the installation type desired and click the Next button to continue.

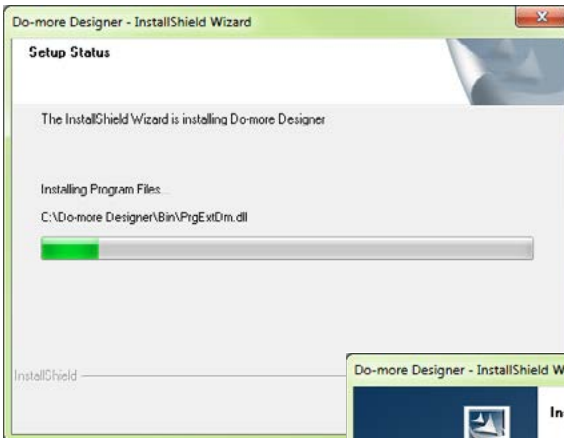
The next screen to appear is the Ready to Install the Program window. This window is an alert window, cautioning you that the program is about to be installed. If there are any changes that need to be made to the install settings do them now before continuing.

To review or change any of the previous installation selections, click the Back button to return to the appropriate window and make the change. If no changes are necessary click the Install button to begin the installation.



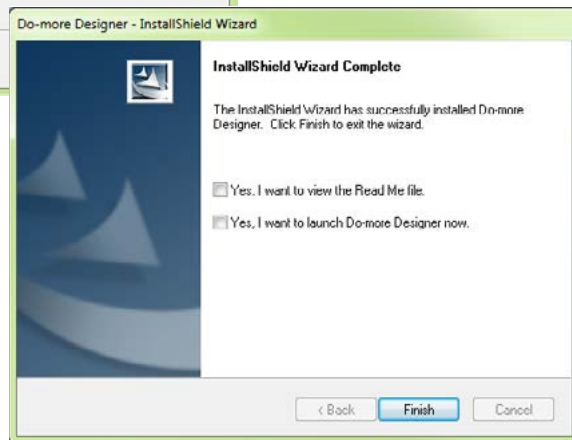


The popup shown here will allow you to choose whether or not to install a shortcut for the software on your PC's desktop. Click Yes or No to continue with the installation.



The software will now install the needed files and folders with the Setup Status window detailing the status of the installation.

Once the installation has been successfully completed, the window below will open. Your software is now installed and ready to use. The installation wizard can now be closed by clicking the Finish button at the bottom of the window.



Step 2: Launch Do-more Designer Software



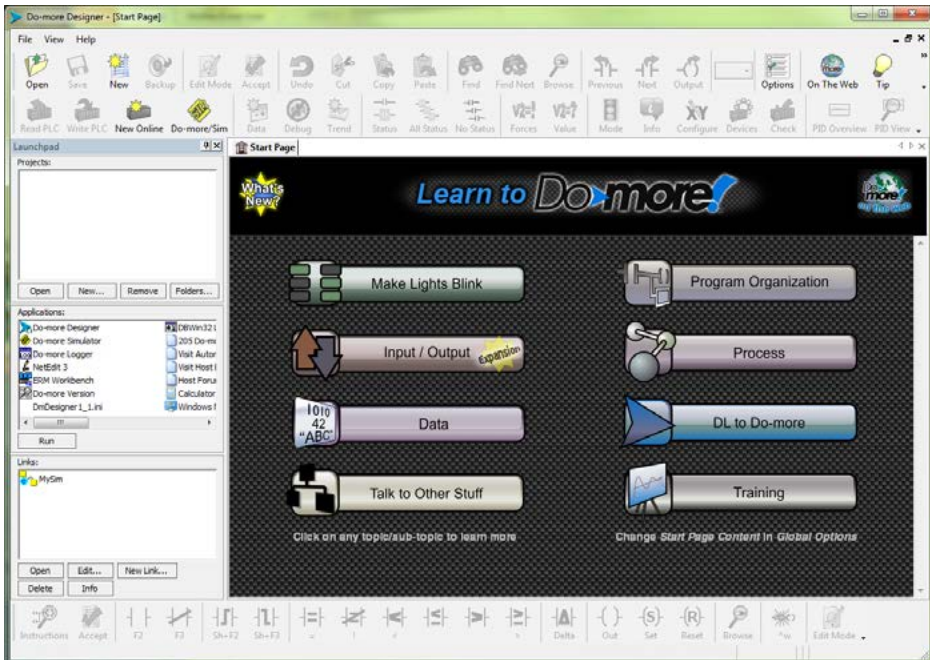
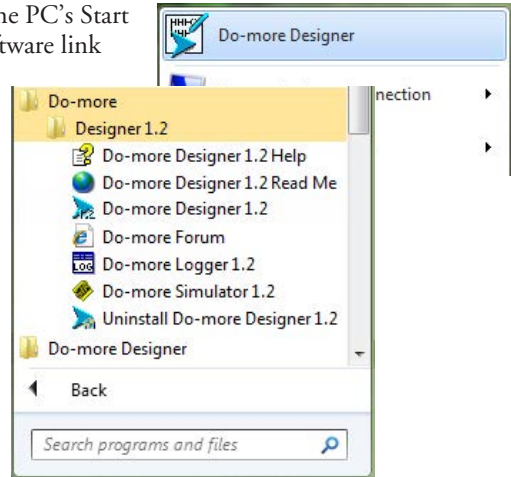
After installing Do-more Designer, launch the software by double clicking the desktop DM icon.

You can also launch the software from the PC's Start menu or All Programs menu. If the software link is not embedded in the Start menu, use the path: Start > All Programs > Do-more > Designer x.x > Do-more Designer x.x to launch the software.



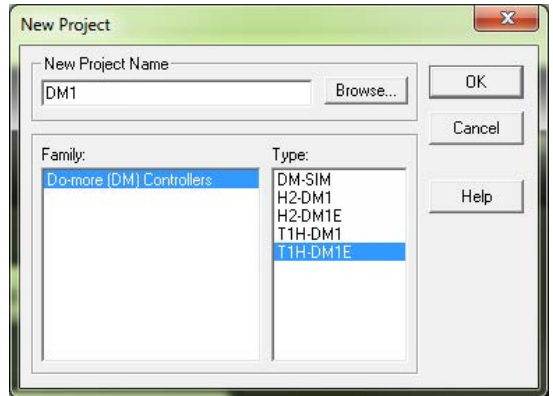
NOTE: Software version 1.2 or greater is required.

The Do-more Designer Software will start up and display the Start Page shown below. This page consists of a Launchpad with quick links to existing projects, software applications and communications links. There is also a section containing shortcuts to important help file topics and the Do-more Designer simulator application.



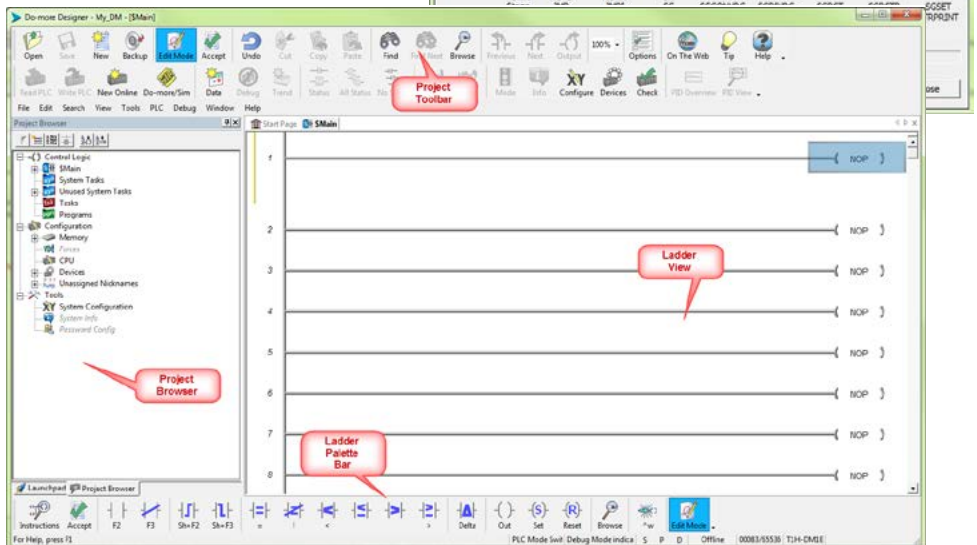
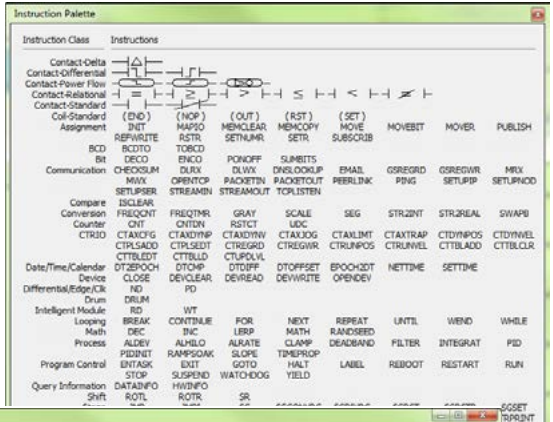
To begin a new project offline select New from the toolbar on the Start Page. The New Project window seen here will open.

Name the new project and select the type of controller it is intended for. Use the Browse button to choose a different location to store the project or accept the default location. Click OK after your selections have been made to continue. The Main programming window and Instruction Palette shown below will open.



The Instruction Palette lists all of the instructions available for use in your program. A brief explanation of each instruction is provided once the instruction is highlighted and a more detailed explanation is available in the help file.

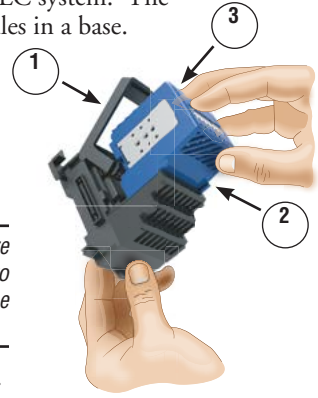
The Main programming window is divided into menus and toolbars for quick access to configurations, instructions and other needed items used during project development.



Step 3: Install Hardware

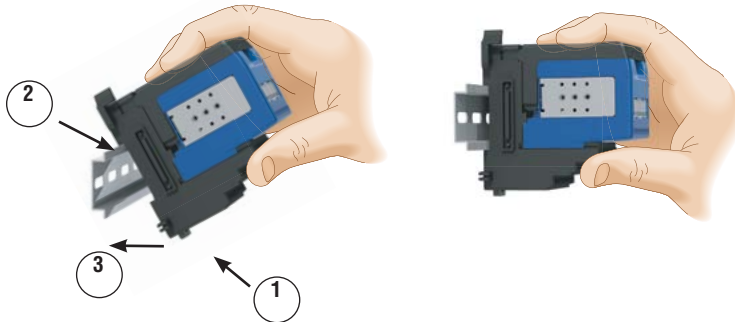
The “Installation and Wiring” chapter of this manual contains detailed information for the installation of components in your Do-more T1H Series PLC system. The following summary explains the basic steps for installing modules in a base.

- First, insert module into base:
 1. Pull base arm back to allow space for module to enter base.
 2. Align module slides with base track.
 3. Press module firmly into base.
- Next, mount the components on the DIN Rail:

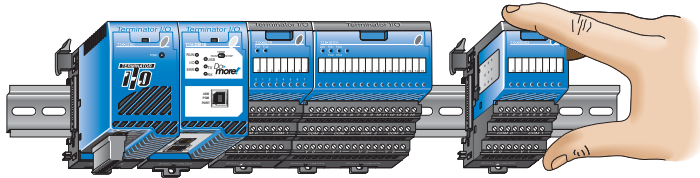


NOTE: Do not force the modules on the DIN rail. Due to slight size variations in different manufacturers' DIN rail, it may be necessary to first unlatch the locking tab, rotate the module into place, then latch the locking tab.

1. Make sure the locking tab is in the latched position (pushed in).
2. Hook upper tab over upper flange of DIN rail.
3. Tilt the unit toward DIN rail until it snaps securely to DIN rail.



- Finally, slide the module assembly into position on the DIN Rail:
Slide the module assembly on the DIN rail until the clip arm attaches securely to the adjacent module.

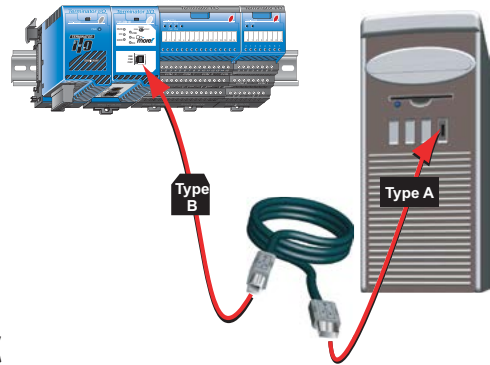


NOTE: One power supply is required in the leftmost component position followed by the CPU. Additional power supplies should be added between I/O modules as necessary to meet power budget requirements. Each power supply powers the modules to its right, but is interrupted by the next power supply.



WARNING: Minimize the risk of electrical shock, personal injury, or equipment damage. Always disconnect the system power before installing or removing any system component.

Once all of the modules have installed, connect the USB cable. standard USB cable with and Type B connectors. (Ethernet Serial connections are also available, but shown for this example.)

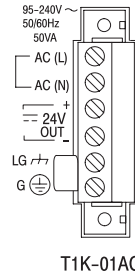


Step 4: Apply Power to the PLC

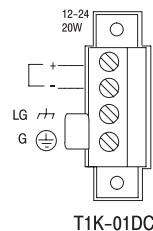
Power is supplied to the Do-more T1H Series PLC through the backplane of the base from the power supply. The following diagram and table show the terminal connections located on Terminator power supplies and their specifications.



110/220 VAC Terminal Strip



12/24 VDC Terminal Strip



Power Supply	T1K-01AC	T1K-01DC
Wire Size	Solid: 24–12 AWG Stranded: 24–12 AWG	Solid: 24–12 AWG Stranded: 24–12 AWG
Recommended Torque	4.43–5.31 lb-in (0.5–0.6 N·m)	4.43–5.31 lb-in (0.5–0.6 N·m)

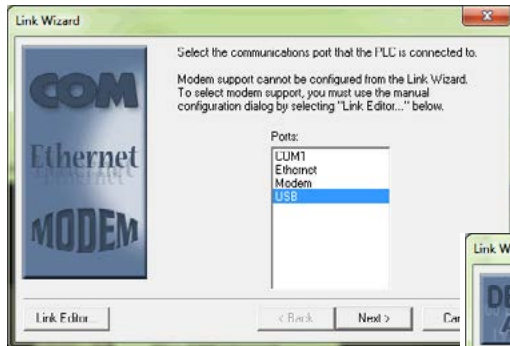
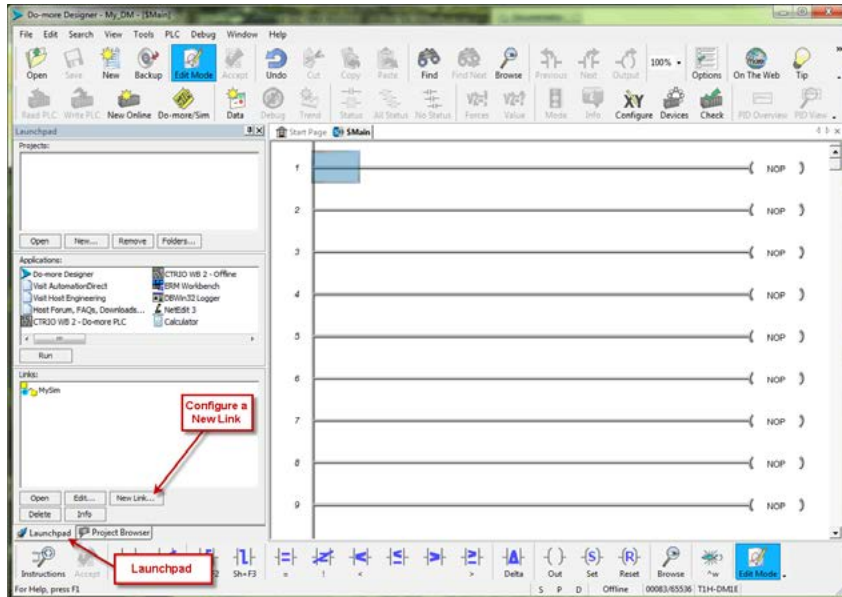


NOTE: You can connect either a 115VAC or 220VAC supply to the AC terminals.

Once all of the power wiring has been completed and verified, connect the appropriate voltage source to the power supply and power up the system. The Do-more T1H Series PLC will perform a self evaluation once power is applied. Refer to the “Installation and Wiring” chapter of this manual for more power supply and input wiring information.

Step 5: Establish Communication

Now that the Do-more T1H Series PLC is powered up, you need to establish a communications link between the PC and the PLC. The Do-more Designer software provides a Link Wizard to assist you with configuring this new communications link. To open the Link Wizard, select the New Link... button in the Links section of the Main Page's Launchpad as shown below.



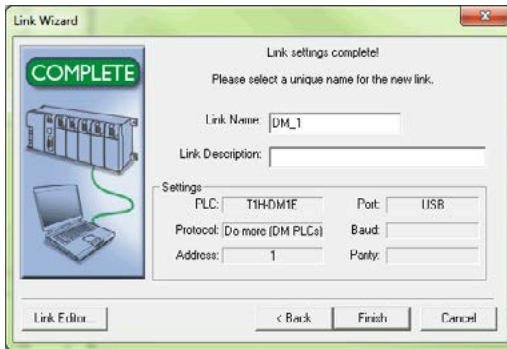
Wizard will first ask you to choose which communications port you will be using. In this example, we will be using a USB connection. Select USB, click Next and the wizard will automatically search for available CPU's on that port.

Choose the CPU that you are



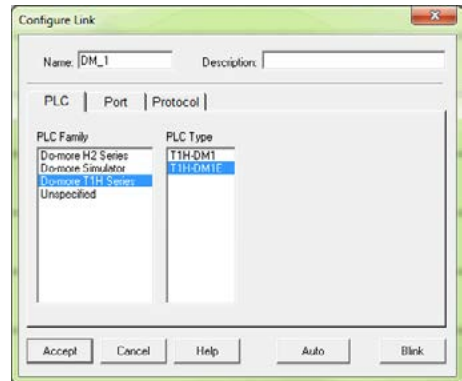
programming and select Next. The Do-more Designer software will create a link to that controller.

The Link Wizard will now display the saved settings for this link as seen on following page.

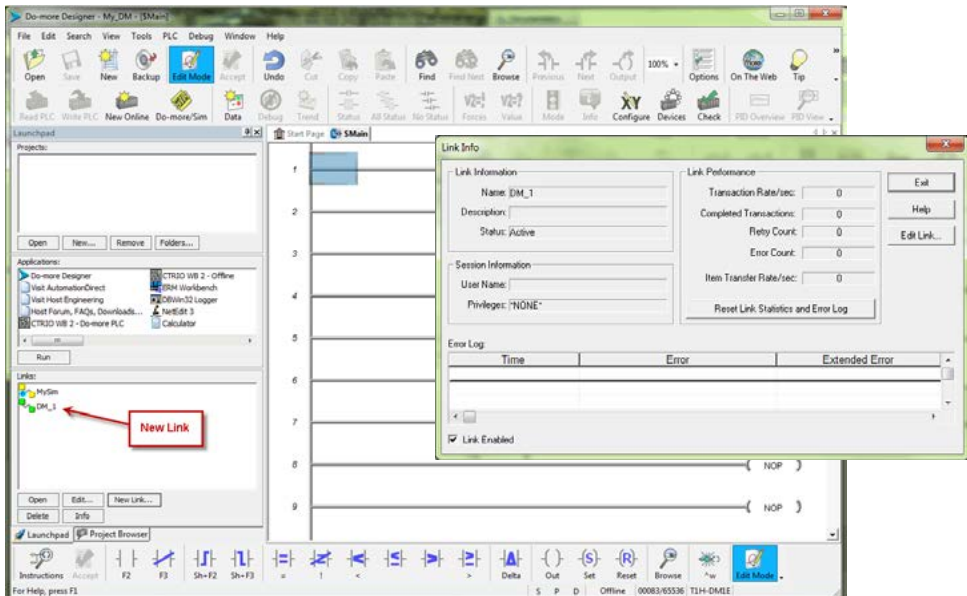


A unique name is required for each link that is created. Name the new link and, if desired, give it a description then select Finish.

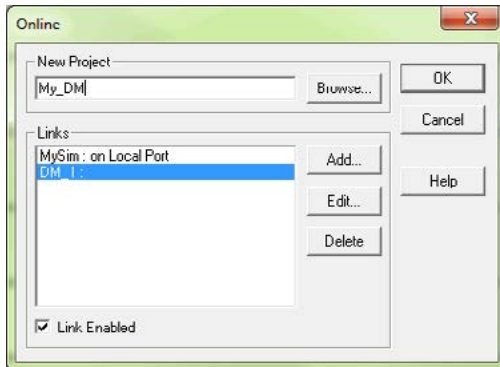
You can also manually configure each link by selecting the Link Editor... button from the lower left corner of the Link Wizard. The Configure Link dialog will open, as seen below, allowing you to select PLC types, port parameters, and protocols.



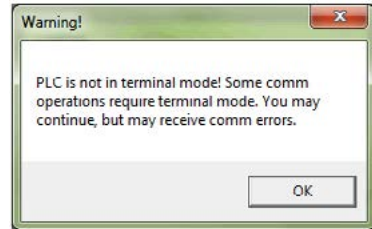
Once you have completed configuring your communications link, either manually with the Link Editor or automatically with the Link Wizard, it will be available to select in the Links section of the Launchpad. There you can edit, enable/disable, delete or view statistics for that link.



Now select the New Online button and the Online dialog box, seen below, will open. From this dialog, you are given available communications links to choose from with options to add, edit disable/enable, or delete links.

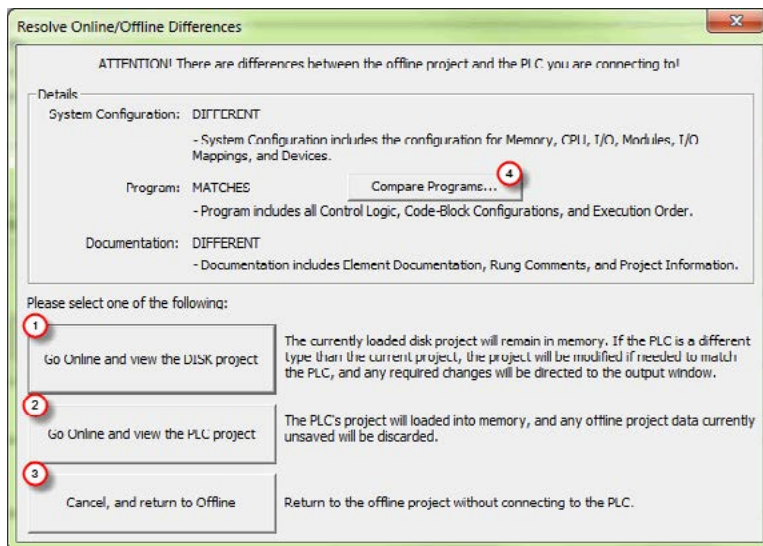


Choose the appropriate link, select OK and the software will connect to the Do-more T1H Series PLC. If the mode selector switch on the CPU module is not in the Term position when connecting, the warning shown below will appear.



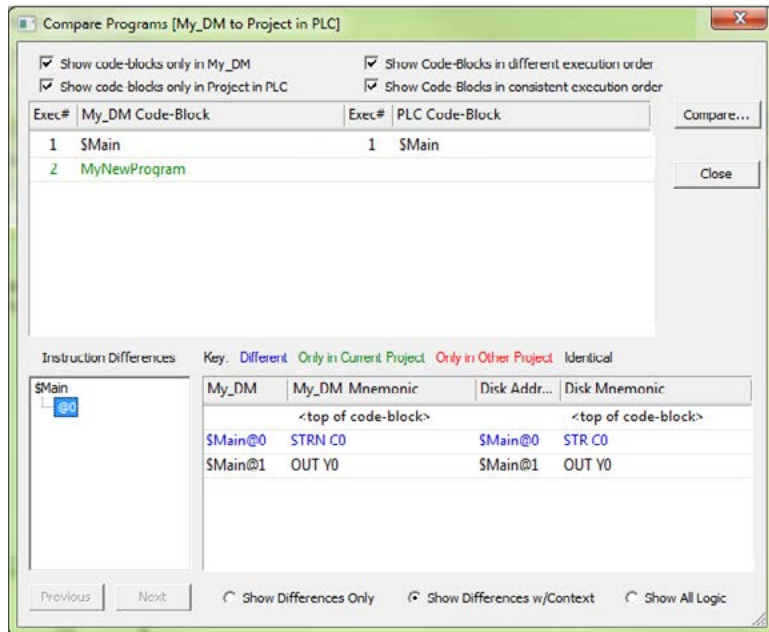
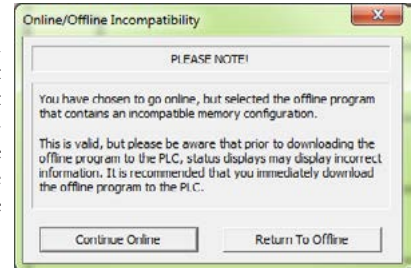
You are allowed to continue if you wish or place the mode selector switch on the CPU module in the Term position to avoid any unintended communication errors.

If you were connecting to the CPU module with a project created offline, you may encounter the message window shown here.



Only with the New Online option does the Do-more T1H Series PLC assume that you are creating a new project from scratch. With any other method, such as PLC > Connect, the software will compare the project in the controller with the offline version you have open. If there are any differences, this warning window will appear detailing the options available for continuing:

1. Go Online and view the DISK project - This option will go online with the PLC but display the project from disk. Status displays may show incorrect information. If the memory configuration in the disk-based project contains elements that are incompatible with the memory configuration currently in the Do-more PLC the message box seen here will be displayed.
2. Go Online and view the PLC project - The project from the PLC will be opened by Do-more Designer.
3. Cancel, and return to Offline - This option will cancel the connection attempt and return to the offline project.
4. Compare Programs... - If you are unsure as to why the two projects are different, then this option will do a comparison of the projects and detail the differences found. An example comparison is seen below.

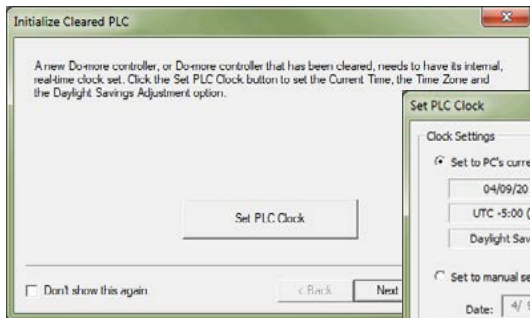


In this example, the PLC project titled My_DM was compared with a project stored on the PC. The report window shown above illustrates the differences found between the two.

According to the report, the PLC project was different in two areas. First, a new code-block was found only in the PLC project. This new code-block is titled MyNewProgram and is highlighted in green. The green color represents items that exist only in the Current Project (project in PLC) and not in the Other (project in PC). Also, the comparison noted that a normally open contact (STR) was changed to a normally closed contact (STRN) at \$Main@0. This item is highlighted in blue which represents items that are different between the PLC Project and the project in the PC.

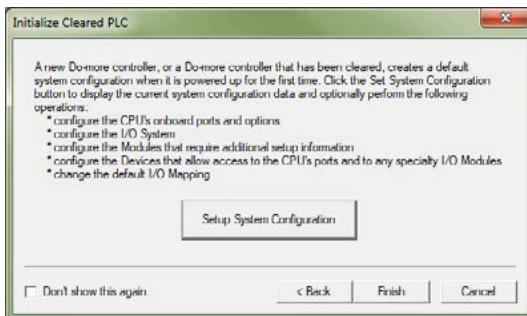
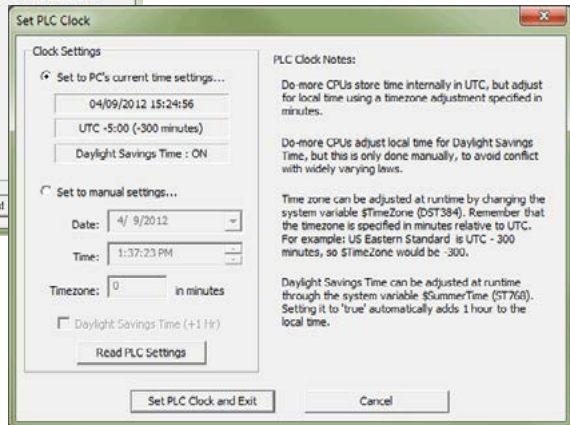
Other colors used in the comparison are red, which denotes items that exist only in the project on the PC and not in the PLC and black which highlights items that are identical in both projects. There are also numerous checkbox and radio button options available to help you analyze the differences between projects.

Once you have connected to the CPU either by using the New Online option or using PLC > Connect for offline projects, you may encounter the initialization windows shown here.



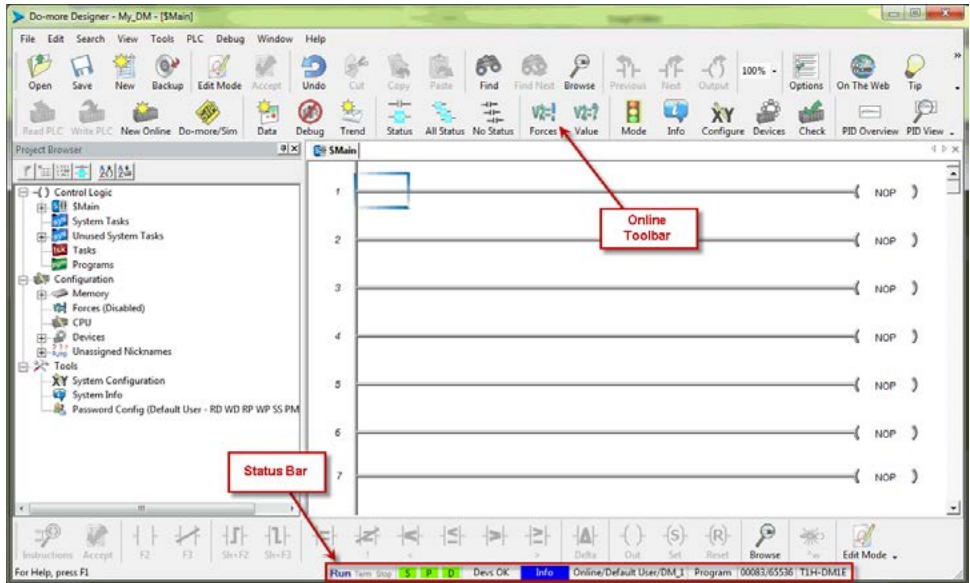
The Set PLC Clock option (above) allows you to set the internal, real-time clock of the PLC.

The Set PLC Clock window (right) has options for Timezones and Daylight Savings Adjustments.



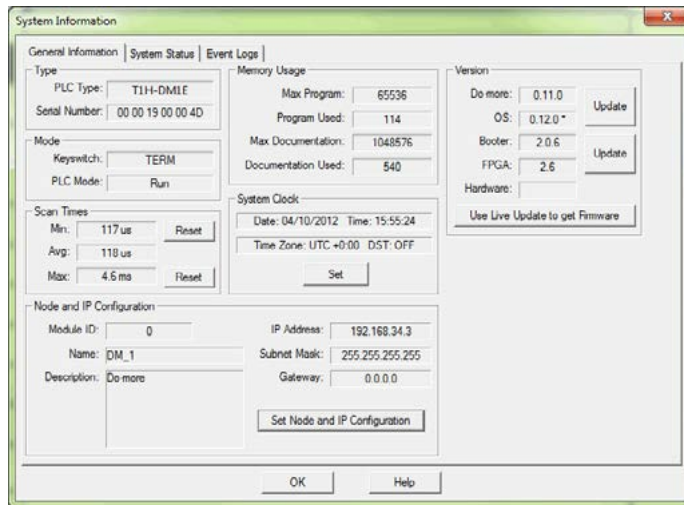
The Setup System Configuration option (left) allows you to configure the parameters of the Do-more T1H Series PLC. I/O module configuration, CPU ports, and I/O mapping profiles are a few of the parameters available in the System Configuration window. Refer to the following section for Hardware Configuration options.

Once all parameters have been configured, the following programming window will open with the online toolbar active.



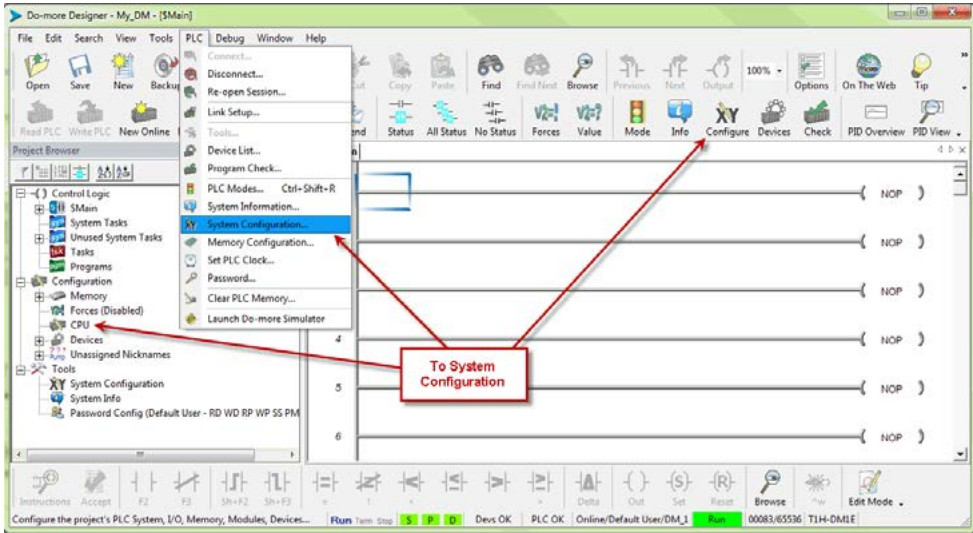
Notice that the status bar indications show PLC type, memory usage, communication status, PLC errors, PLC mode, etc. Hovering your mouse over the status bar will highlight the items that are selectable. If you select one of these items, a new window will open with real-time data and options that are available for that selection.

As an example, the System Information window seen here appears after selecting the Memory Usage indication from the status bar.

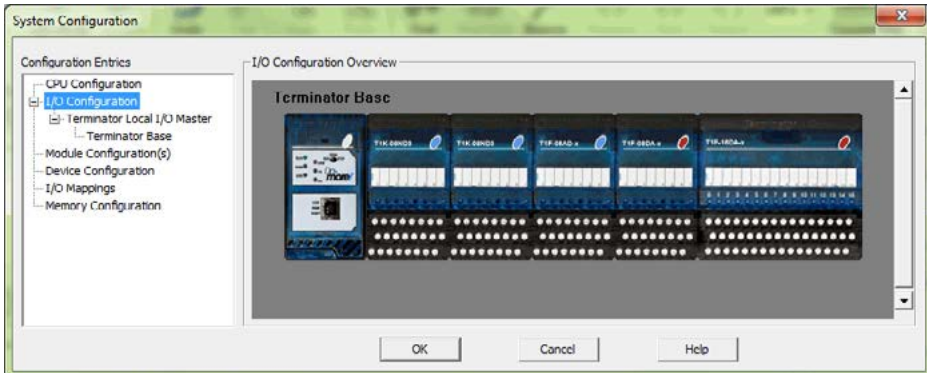


Step 6: Verify Hardware Configuration

Next, you will need to verify the hardware configuration for accuracy. The Do-more T1H Series PLC has an auto discover feature that will automatically detect the I/O modules installed. You can see the results of this search by selecting PLC > System Configuration, double clicking the CPU link under the Configuration tab in the Project Browser, or by clicking the XY Configure icon in the Project Toolbar.

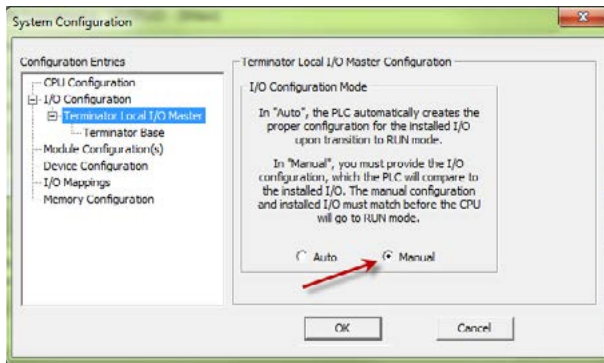


On the left side of the System Configuration window is an index of topics titled Configuration Entries. Click the I/O Configuration tab and you should see an overview of the modules that the software located, similar to the following.



From here you can verify that the software has detected all of the I/O modules that are installed.

The Do-more T1H Series PLC allows the I/O to be manually configured as well. In order to do so, you must first set the I/O Configuration Mode to manual. Select the Terminator Local I/O Master tab found under the I/O Configuration tab in the Configuration Entries index.

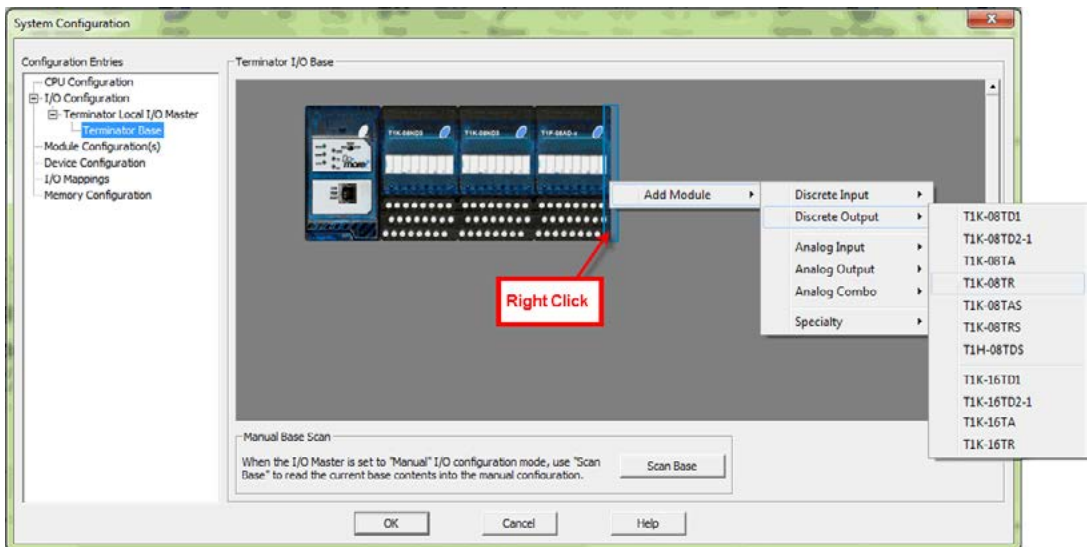


The Terminator Local I/O Master Configuration window shown here will appear. From here select Manual to configure the I/O modules that are installed in the system yourself. It is important to remember that the PLC will compare what you configure with what is installed and they must match for the PLC to work properly.



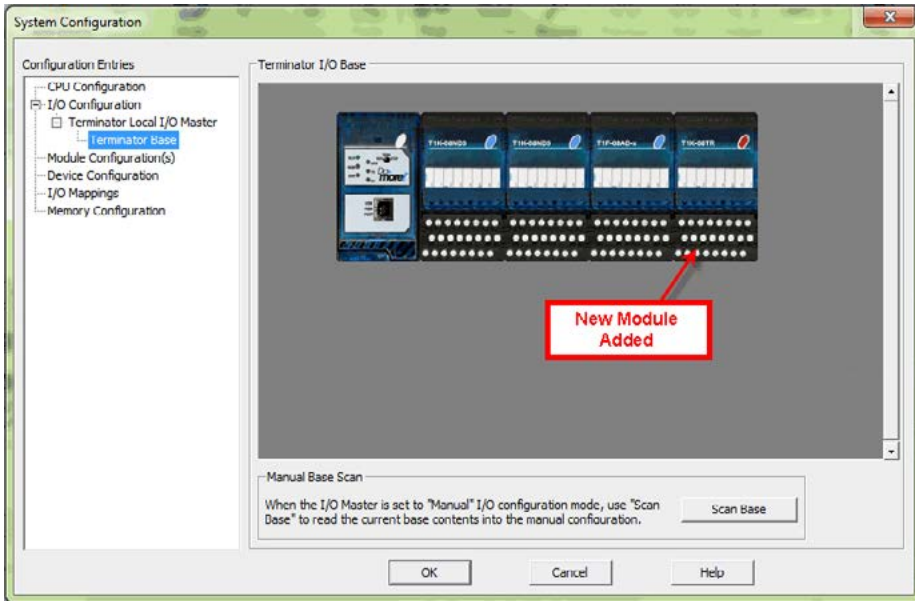
NOTE: If the manually configured I/O modules do not match the installed I/O modules, the PLC will not go into Run Mode.

After you have set the configuration mode to Manual, select the Terminator Base tab in the Configuration Entries index. This will take you to the following set up window.

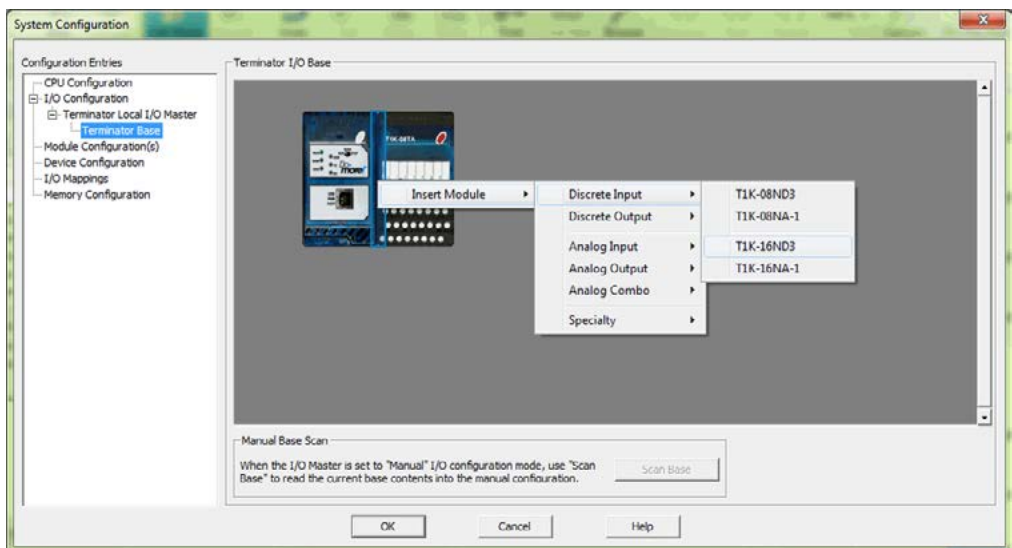


Notice that from this window, you can perform a Manual Scan. When initiated, this scan will poll the available modules connected to the PC and display the I/O found. The results can then be altered as you choose.

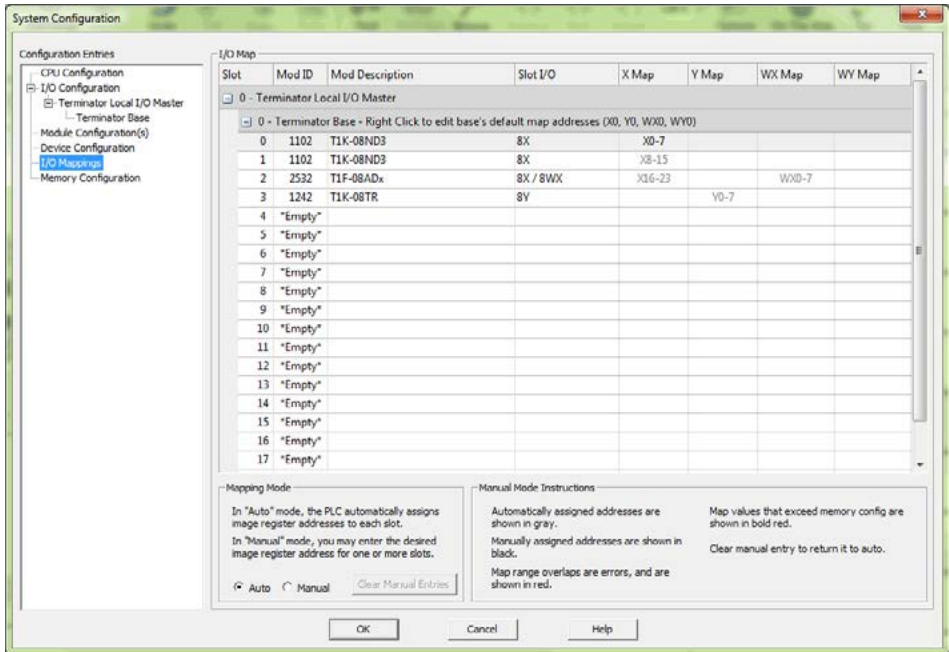
To manually enter your I/O modules into the configuration, right click on the slot the module will reside in, select Add Module and then choose the module from the drop down list. Once you have selected the module, it will appear in the slot that was chosen.



In order to Insert a module manually between two existing modules in the System Configuration Window, you would follow the same steps as mentioned above but instead of selecting 'Add Module' the selection will be 'Insert Module' as seen below.



After the hardware configuration has been verified select the I/O Mappings tab in the Configuration Entries index. This option will display the assigned addresses for the configured modules as seen below.

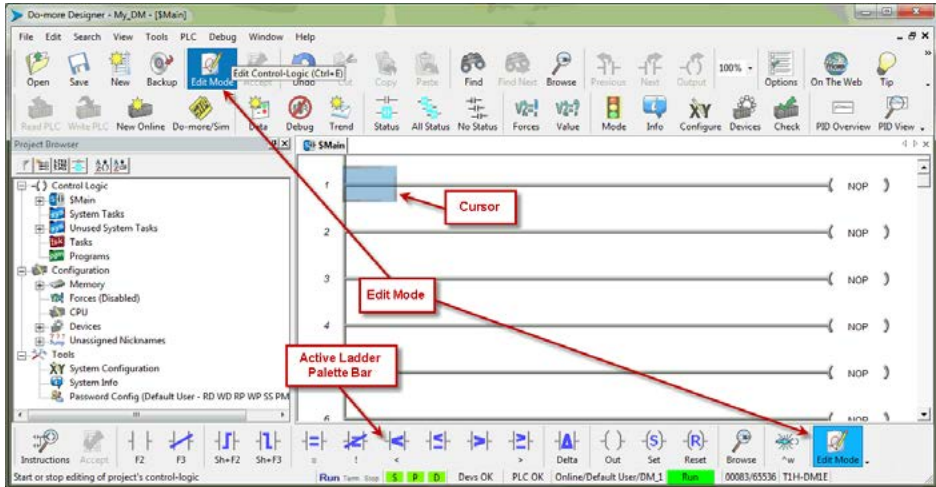


These X (discrete input), Y (discrete output), WX (analog input) and WY (analog output) addresses are automatically assigned by Do-more Designer. You have the option to manually configure these addresses by selecting Manual in the Mapping Mode section at the bottom of the window.

The Manual Mode Instructions section, also found at the bottom of the window, details the various color indications associated with this mode.

Step 7: Create a Ladder Logic Program

To create a ladder logic program, you must first place the software in Edit Mode. Click the Edit Mode button found in the Project Toolbar or Ladder Palette Bar or use the shortcut Ctrl+E.



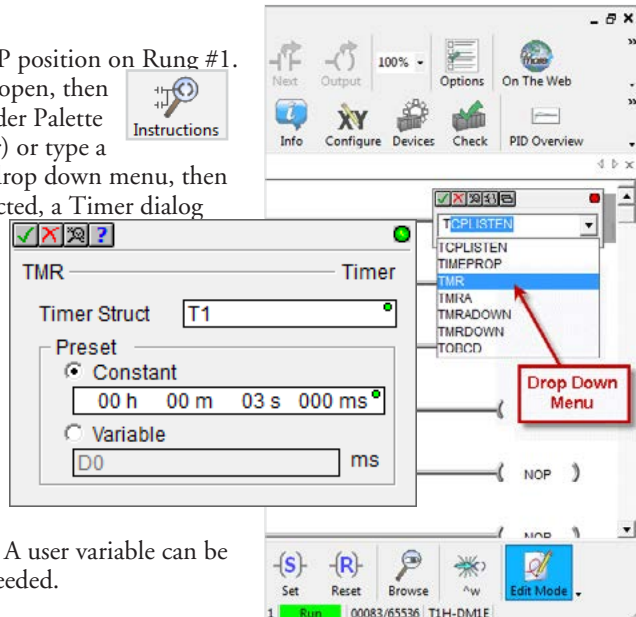
When in Edit Mode, all of the Ladder Palette Bar's options will become active and the cursor in Ladder View will fill in blue. Now, you are ready to begin entering the example ladder logic below.

Rung #1

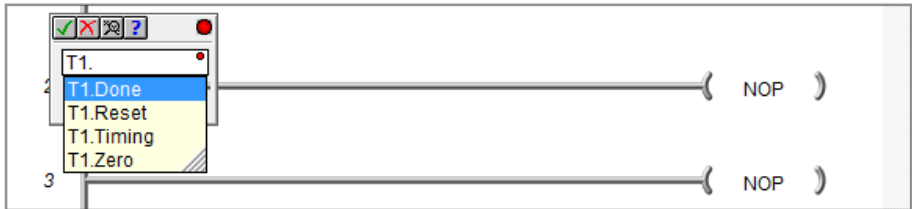
Place the box cursor in the NOP position on Rung #1. If the Instruction Palette is not open, then click Instructions from the Ladder Palette Bar and select the TMR (Timer) or type a "T" and select TMR from the drop down menu, then press Enter. Once TMR is selected, a Timer dialog box appears.

1. Set the Timer Struct to T1.
2. Enter 03 into the Preset Constant Value for the seconds (s) preset.
3. Click the checkmark in the upper left corner to accept.

After clicking the checkmark, Rung #1 should show the T1 timer (TMR) instruction with a preset of 3.000 seconds. A user variable can be assigned to the preset value if needed.

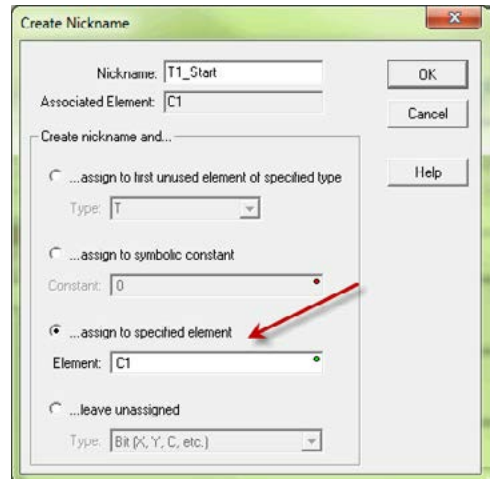


Since a Timer is a structure it has predefined elements associated with it. Elements such as .Acc (accumulated time), .Done (the completion bit) and .Timing (the timer is enabled and timing). Therefore, if “T1.” is entered into any contact name the Auto-Complete feature of Do-more Designer will display all applicable bit (boolean) selections available for that structure. Selecting the .Done option, as seen below, will assign this element to the contact and the contact name will be T1.Done.

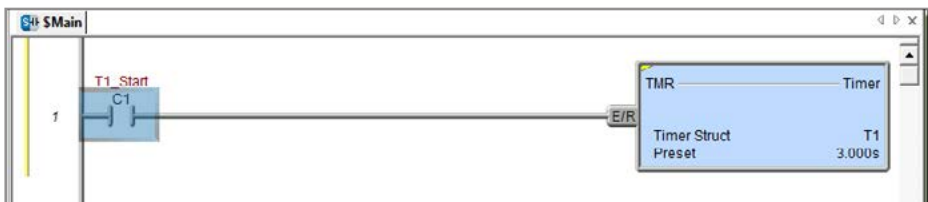


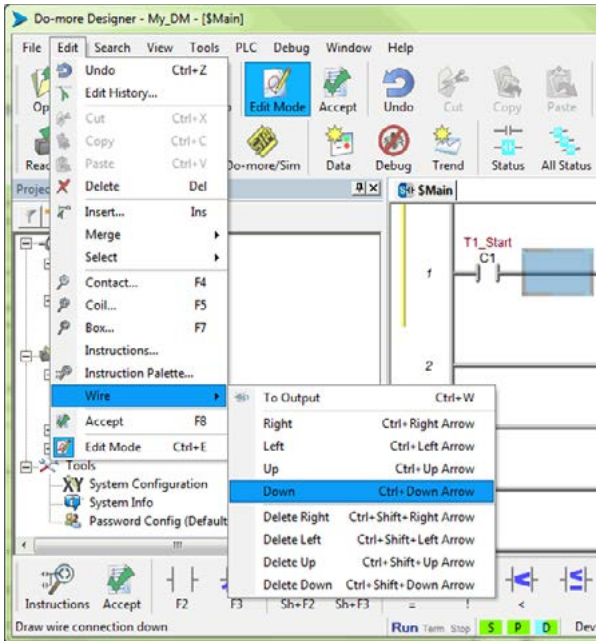
This feature works for all structures including: timers, counters, PID loops and strings. Many system data types such as, \$Main and \$FirstScan, as well as user-created devices like ECOM, CTRIO, or SERIO modules can also use this feature. See the Do-more Designer Help file for more information on structures.

Now place the box cursor in the leftmost column of Rung #1. Type in a meaningful nickname, such as “T1_Start”, and press Enter or select the Normally Open Contact (F2) from the Ladder Palette Bar, enter “T1_Start” for the name and click the checkmark in the upper left corner. Either method will open the Create Nickname dialog seen here. Select the third option to assign the nickname to a specified element, type the desired memory bit for this contact (C1) and select OK.



Rung #1 should now appear as follows:



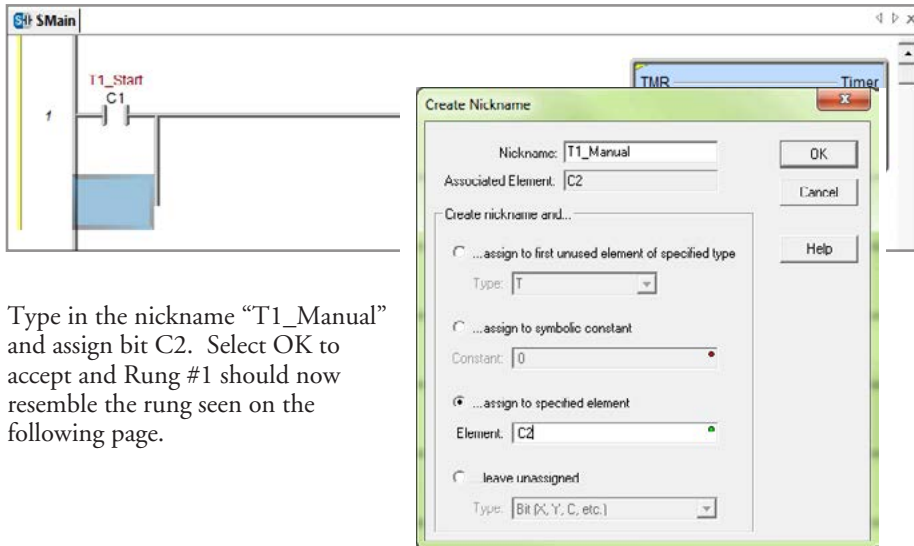


With the cursor in the position to the right of contact T1_Start, you are going to begin drawing a branch circuit. Under the Edit drop down menu, select Wire, then select Down. Notice the shortcuts that are available for wire drawing. The wire that should now appear in your ladder could have also been drawn using the shortcut Ctrl+Down Arrow.



NOTE: There are also Delete Wire options in the Edit drop down menu that are used to erase any wires not needed.

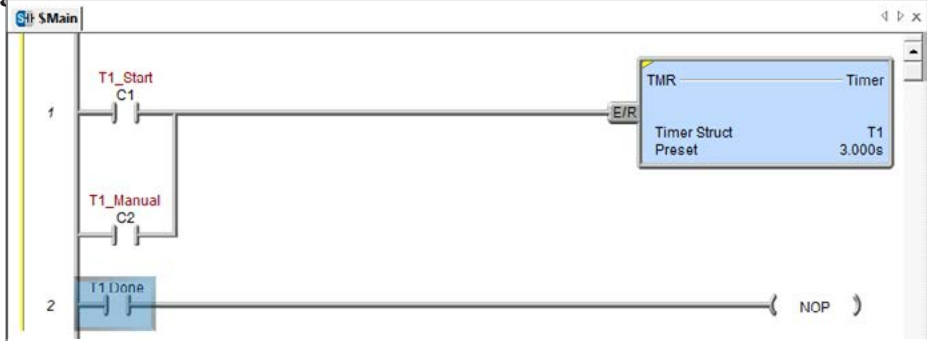
Now place the cursor in the space to the left of the new line and select another normally open contact.



Type in the nickname “T1_Manual” and assign bit C2. Select OK to accept and Rung #1 should now resemble the rung seen on the following page.



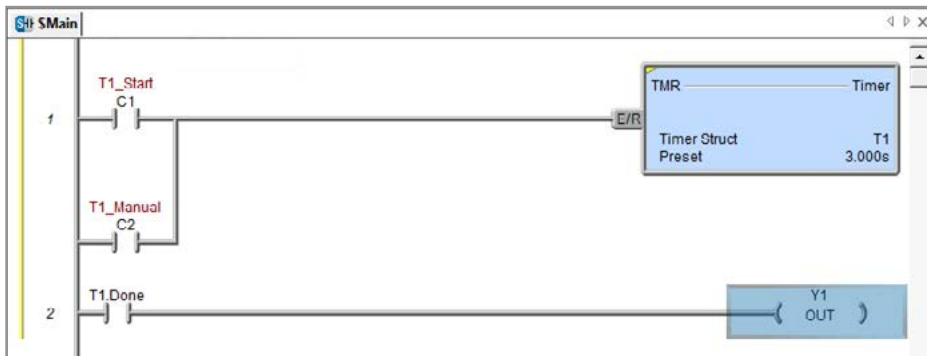
Rung #2



Place a normally open contact in the first position of Rung #2. This contact will be tied to the Done bit of timer T1. Therefore, the name for this contact should be entered as “T1_Done”. There should be no Create Nickname dialog as seen with the earlier normally open contacts.

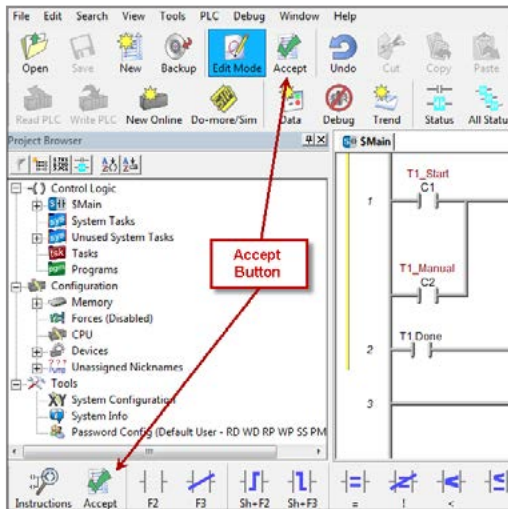
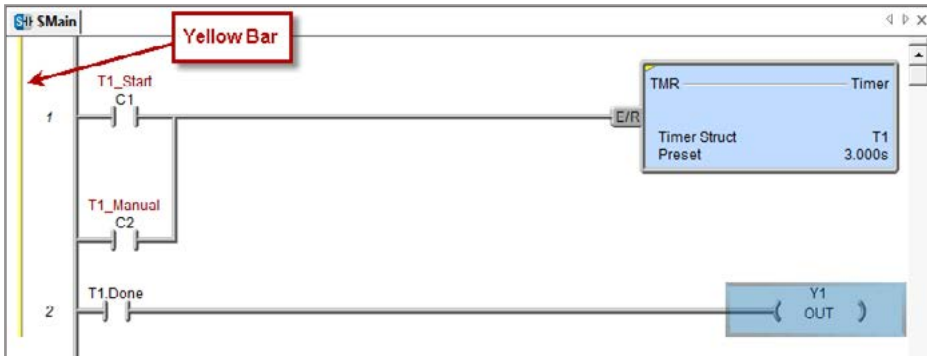
Lastly, you will need to add an Out coil to the end of Rung #2. Place the cursor at the end of the rung and either select Out from the Ladder Palette Bar or just type “OUT” and select the Out instruction from the drop down menu. Next, choose which bit will be tied to this coil. Tie this coil to the physical output Y1 by typing “Y1” and click the check mark.

The ladder program should now look like the following. When either the T1_Start or T1_Manual contact is energized, the timer will begin timing. When it times out, contact T1_Done will energize and the output coil Y1 will turn on. Note that an END instruction is not required.

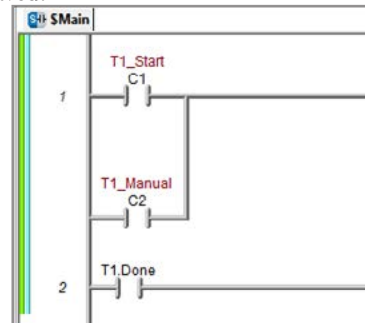


Chapter 1: Getting Started

The yellow bar in the margin signifies logic that has not been accepted. So once you have verified your logic, click the Accept button in the Project Toolbar or the Ladder Palette Bar to accept the changes.



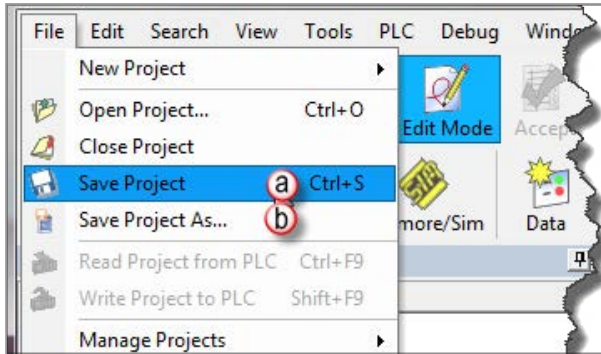
You should now see blue and green bars, shown below, signifying that the logic has not been downloaded to the CPU or saved.



Now exit the Edit mode by clicking the Edit Mode button once again or by pressing ESC on the keyboard.

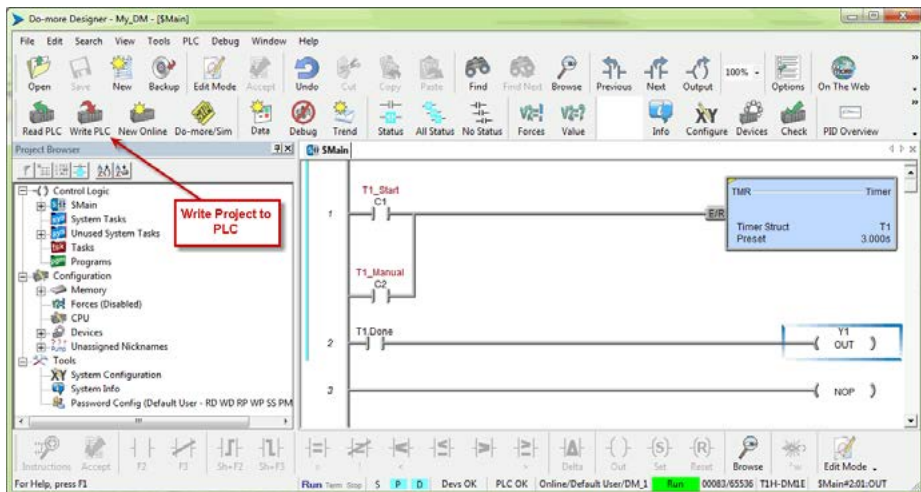
Step 8: Save a Project

Save the project by selecting (a) Save Project (Ctrl+S) from the File drop down menu. Or save the file under a different name or in a different location by selecting the (b) Save Project As... option.



Step 9: Write Project to the Do-more T1H Series PLC

Now that you have created the example ladder logic program, you can write the program to the PLC. To do so, click the Write PLC button in the Project Toolbar.

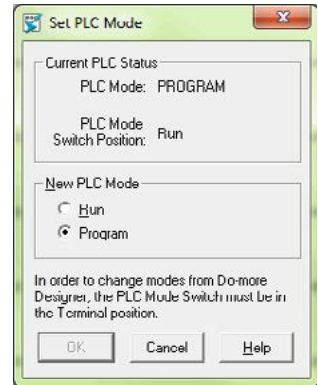
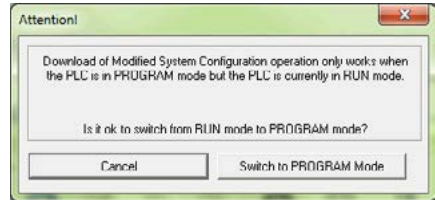


If the Write PLC button is not active, then you must first connect to the PLC to activate the online portion of the Project Toolbar (see the “Establish Communication” section of this chapter). If you have altered the System Configuration, which includes the hardware configuration, in any way, then the PLC must be taken out of Run mode in order to process the download.

The message seen here will appear asking you to verify if this is a good time to do so. Since this is the setup phase of this system, select Switch to Program Mode and continue with the download. If this system was previously commissioned and in use, then you would need to verify that the process it is controlling can be interrupted at this time before continuing.

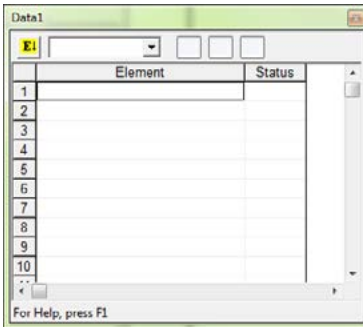
Download the project and once the download is finished, assuming there are no errors, the Do-more T1H Series PLC should return to Run mode. If at any time you need to change the PLC mode, select the Mode icon in the Project Toolbar, click the Mode Status indication in the Status Bar or select PLC > PLC Modes....

The PLC Modes window shown here will open displaying the current mode the PLC is in with options to change it to either Run or Program mode. Click OK to accept the change or Cancel to exit.



Step 10: Testing Project Using Data View

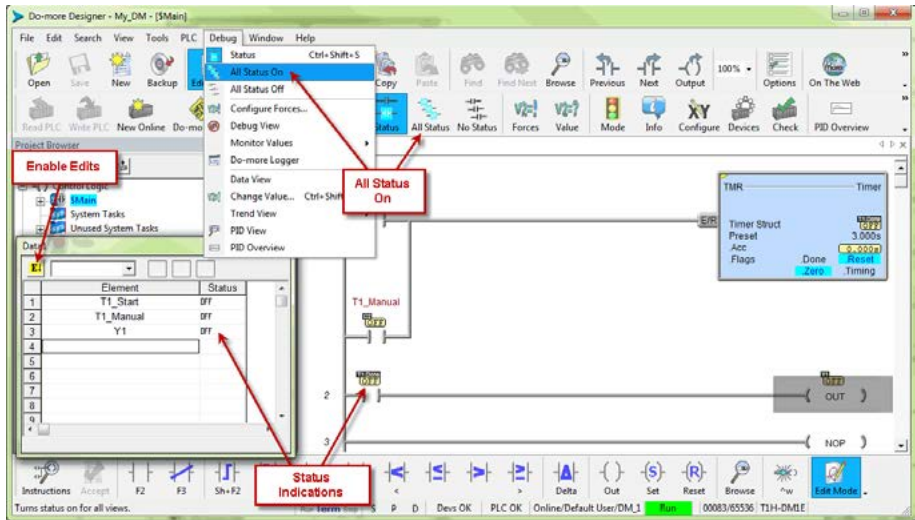
With the project successfully downloaded into the Do-more T1H Series PLC, you can now test the function of the ladder program using the Data View tool. To start, you need to open a new Data window in the software. To do so, click the Data icon in the Project Toolbar, select Debug > Data View > New or press Ctrl+Shift+F3.



The Data View window seen here will open. This window will open in the project browser section of the programming window but it can be relocated anywhere on the screen by clicking the title bar and dragging it to a new location.

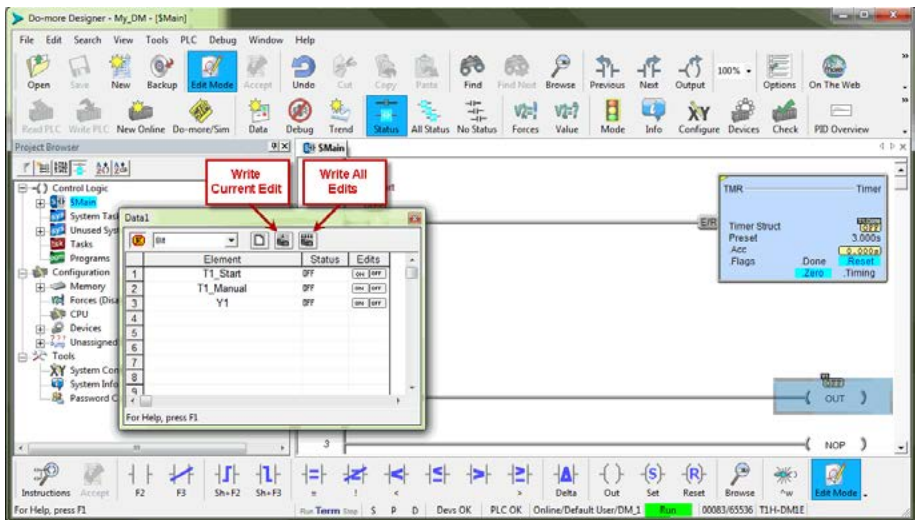
Now enter the elements that you wish to monitor. On line one type "C1" under the Element column and press Enter. You will see the C1 change to the variable name associated with it or T1_Start. On line two type the element "C2" and on line three type "Y1".

With the ladder elements entered into the Data View window, you now need to activate their status. To do so, click the All Status icon on the Project Toolbar or select Debug > All Status On. The All Status On option will not only activate the status of the Data View window but also the status of the ladder program as seen on the following page.

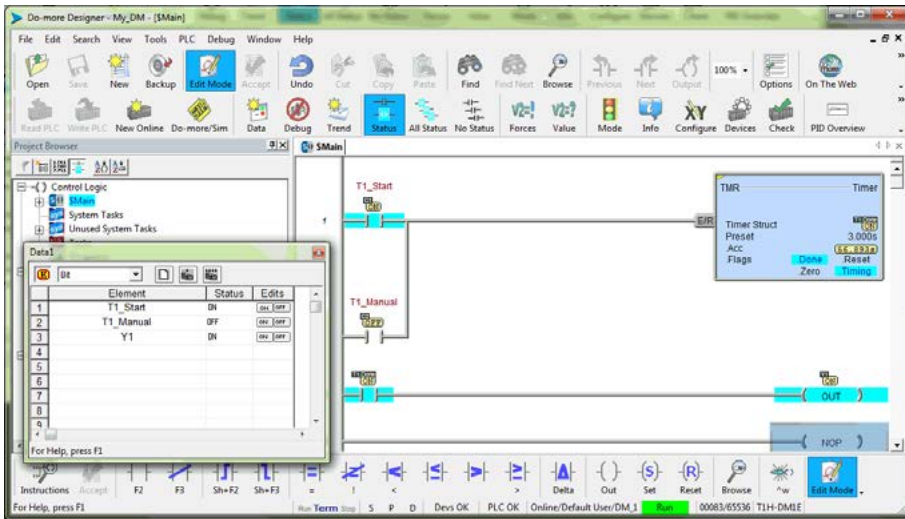


The next step is to enable edits within the Data View window. To do so, click the yellow box with the “E” found in the top left corner of the Data View window, as seen above. The Edits column is now added to the Data View window.

The Edits column allows you to make changes to the current values of the elements listed. T1_Start’s current value is OFF. Click the ON button under the Edits column and the Write Current Edit and the Writes All Edits buttons will appear at the top of the window. These buttons will write individual or all edits made in the Data View window to the PLC.



Click the Write Current Edit to PLC button and confirm it. This will write the new value to T1_Start. Once T1_Start changes to an ON state, the timer (T1) will begin to time and quickly reach the preset. As soon as the preset is reached, the done bit, T1.Done, will turn ON causing output Y1 to also turn ON as seen on the following page. Now write an OFF to T1_Start and watch as the timer and Y1 reset.



Congratulations, you have now programmed, downloaded and tested a ladder logic program for the Do-more PLC. Feel free to experiment with a program of your own and don't forget that the software Help file is an essential tool to use when programming your controller.

Accessing the Help File

The software Help file, seen below, is available as a quick reference or detailed guide to the many features and capabilities of the Do-more PLC. To access the Help File select the Help File icon from the Project Toolbar, choose Help from the Help menu drop down or use the shortcut F1.

