

**WARNING:** To minimize the risk of potential safety problems, you should follow all applicable local and national codes that regulate the installation and operation of your equipment. These codes vary from area to area and it is your responsibility to determine which codes should be followed, and to verify that the equipment, installation, and operation are in compliance with the latest revision of these codes.

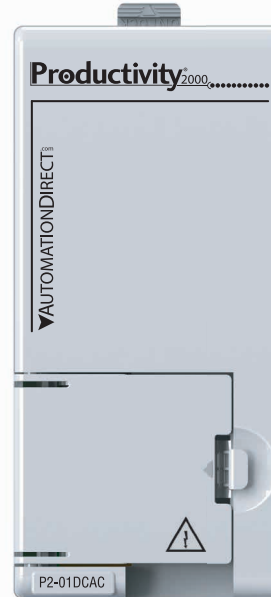
*Equipment damage or serious injury to personnel can result from the failure to follow all applicable codes and standards. We do not guarantee the products described in this publication are suitable for your particular application, nor do we assume any responsibility for your product design, installation, or operation.*

If you have any questions concerning the installation or operation of this equipment, or if you need additional information, please call Technical Support at 770-844-4200.

This publication is based on information that was available at the time it was printed. At AutomationDirect.com® we constantly strive to improve our products and services, so we reserve the right to make changes to the products and/or publications at any time without notice and without any obligation. This publication may also discuss features that may not be available in certain revisions of the product.

## Terminal Block Specifications

Number of positions	4 screw terminals
Wire Range	22–12 AWG (0.324 to 3.31 mm <sup>2</sup> ) Solid / Stranded conductor 3/64 in (1.2 mm) insulation maximum Use copper conductors, 75°C or equivalent
Screw Driver Width	1/4 in (6.5 mm) maximum
Screw Size	M3
Screw Torque	7-9 lb-in (0.882 - 1.02 N-m)



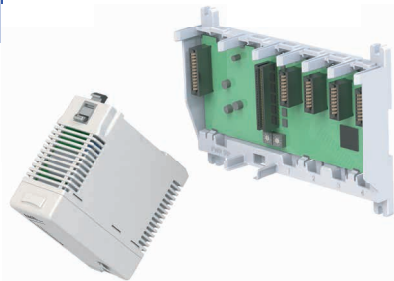
## P2-01DCAC Power Supply

The P2-01DCAC Power Supply provides isolated power to the Productivity2000 base from an external 12–24VDC or 24VAC source.

Warning .....	1
Terminal Block Specifications .....	1
Power Supply Installation Procedure .....	2
Wiring .....	2
General Specifications .....	3
User Specifications .....	3
Hot Swap Information .....	3

Warranty: Thirty-day money-back guarantee. Two-year limited replacement. (See [www.productivity2000.com](http://www.productivity2000.com) for details).

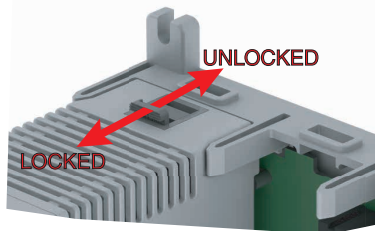
# Power Supply Installation Procedure



**Step One:**  
Locate the left most socket in the base.



**Step Two:**  
Insert the Power Supply at a 45° angle into the notch located at the bottom of the base and rotate up until seated in socket.



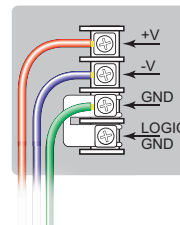
**Step Three:**  
Snap the retaining tab into the locked position.

# Power Hookup

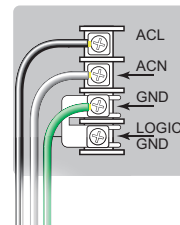
## P2-01DCAC



12-24VDC



24VAC



## Grounding

A good common ground reference (earth ground) is essential for proper operation of the Productivity2000 system. One side of all control circuits, power circuits and the ground lead must be properly connected to earth ground by either installing a ground rod in close proximity to the enclosure or by connecting to the incoming power system ground. There must be a single-point ground (i.e. copper bus bar) for all devices in the enclosure that require an earth ground.

## General Specifications

Surrounding Air Temperature	0° to 60°C (32° to 140°F)
Storage Temperature	-20° to 70°C (-4° to 158°F)
Humidity	5 to 95% (non-condensing)
Altitude	2,000 meters max
Pollution Degree	2
Environmental Air	No corrosive gases permitted
Vibration	IEC60068-2-6 (Test Fc)
Shock	IEC60068-2-27 (Test Ea)
Overvoltage Category	II
Enclosure Type	Open Equipment
Voltage Withstand (dielectric)	750VDC applied for 2 seconds
Insulation Resistance	>10 MΩ @ 500VDC
Module Location	Power Supply slot in a Productivity2000 System.
Weight	284g (10 oz)
Agency Approvals	UL 61010-1 and UL 61010-2-201 File E139594, Canada and USA CE (EN 61131-2 EMC, EN 61010-1 and EN 61010-2-201 Safety)*

\*Meets EMC and Safety requirements. See the D.O.C. for details.

## User Specifications

Input Voltage Range (Tolerance)	24 VAC (-10% / +20%)	12–24 VDC (-10% / +20%)
Maximum Input Power	72VA	45W
Maximum Input Ripple	Less than ±5%	
Cold Start Inrush Current	45A, 4μS @ 24VDC	
Maximum Inrush Current (Hot Start)	Same as Cold Start Inrush Current	
Rated Operating Frequency	50 to 60Hz with +/-5% tolerance	
Input Fuse Protection (Internal)	MICRO FUSE, 250V, 6.3 A, SLOW Non-replaceable	
Recommended Fuse (External)	6A Slow Blow	
Input Reverse Polarity Protection	Yes	
Output Voltages	24VDC, 0.85 A 3.3 VDC, 3.81 A	
Maximum Output Power	32W Combined	
Heat Dissipation	13W	
Isolated User 24VDC Output	None	
Output Protection for Over Current, Over Voltage, and Over Temperature	Self resetting for both voltage outputs to base	
Under Input Voltage Lock-out	Yes, <10VDC	
Over Input Voltage Lock-out	No	
Input Transient Protection	Transorb Plus Input Choke/Filter	
Operating Design Life	10 years at full load at 40°C ambient and 5 years at 60°C ambient	

# IMPORTANT!



### Important Hot-Swap Information

Note: This device cannot be Hot Swapped.

Document Name	Edition/Revision	Date
P2-01DCAC-DS	3rd Ed.	8/22/2022

Copyright 2015, AutomationDirect.com Incorporated/All Rights Reserved Worldwide