



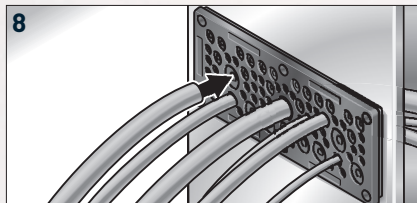
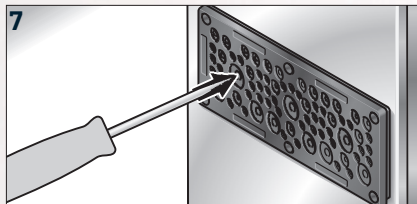
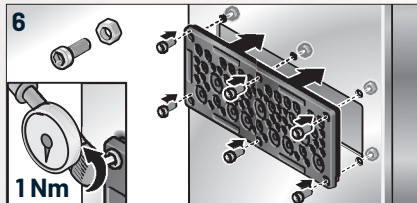
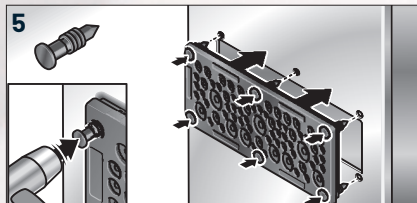
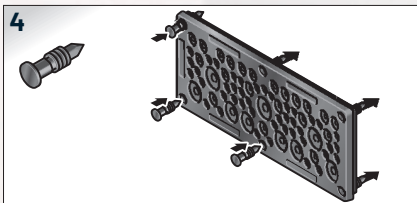
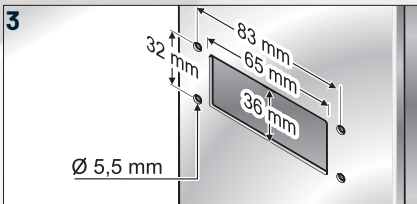
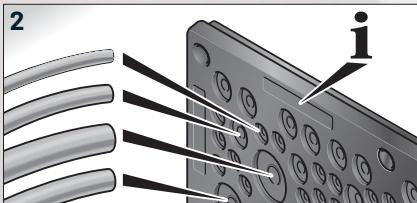
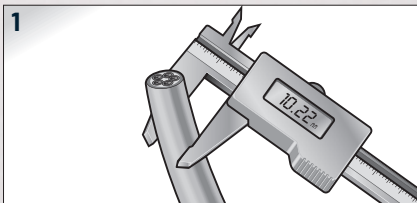
Specification for cURus:

Zu verwendende Montageschrauben und Muttern, M5 Schrauben aus rostfreiem Stahl oder verzinktem Metall Typ 12; Typ 4x Edelstahl AISI Typ 305 oder 316  
Mounting screws and nuts to be used, M5 Type 12 stainless steel or zinc coated metal screws; Type 4x stainless steel AISI Type 305 or 316

[shop.murr-systems.com](http://shop.murr-systems.com)

## Montage

Assembly / Montage / Montaje / Montaggio



## Demontage

Disassembly / Démontage / Desmontaje / Smontaggio

