

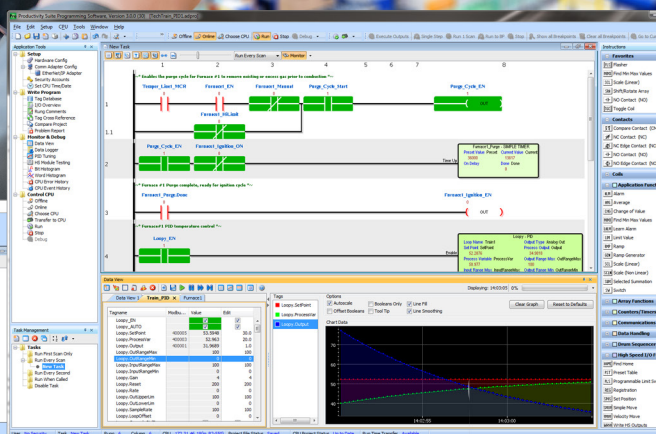
Order Online at AutomationDirect.com  
**BUY ONLINE**  
Available in the U.S. and Canada only

Huge Inventory for Fast Shipping

45-day Money-Back Guarantee  
**45 day**

FREE Technical Support  
Located in USA

FREE Downloadable Software  
for many products  
See website for details



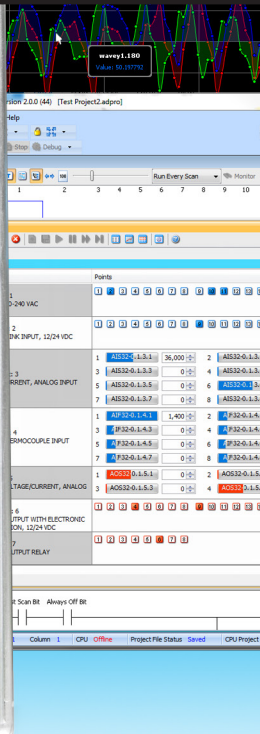
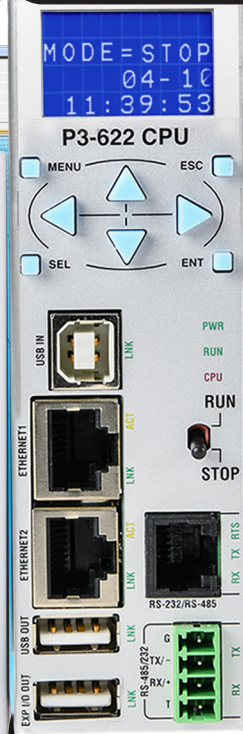
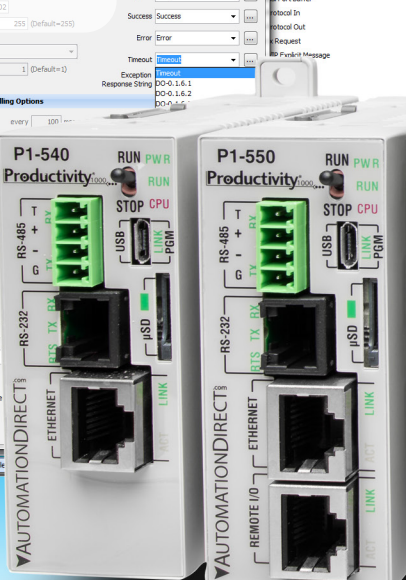
Up-to-date price list:  
[www.automationdirect.com/pricelist](http://www.automationdirect.com/pricelist)

FREE Technical Support:  
[www.automationdirect.com/support](http://www.automationdirect.com/support)

FREE Videos:  
[www.automationdirect.com/videos](http://www.automationdirect.com/videos)

FREE Documentation:  
[www.automationdirect.com/documentation](http://www.automationdirect.com/documentation)

FREE CAD drawings:  
[www.automationdirect.com/cad](http://www.automationdirect.com/cad)



# Productivity<sup>®</sup>Series

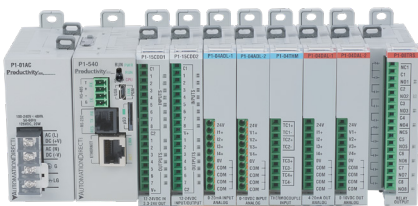
## Software Overview



# Affordable automation for everyone!

## Productivity<sup>®</sup>Series

### Productivity<sup>®</sup>1000



#### Only \$237.00 for CPU - value leader!

The Productivity1000 series PLC is the super compact yet highly capable member of our Productivity controller family. Packed with many of the features you love about the Productivity family but housed in a smaller, slimmer design and with a CPU price of \$237.00, the Productivity1000 PLC will deliver the time, space, and budget savings your project needs.

#### Top hardware features:

- 50MB user memory easily handles complex applications
- Up to 5 built-in communication ports for easy connectivity to your PC or various industrial networks: micro USB, serial RS-485, serial RS-232, general purpose Ethernet 10/100Mbps and remote I/O Ethernet 10/100Mbps ports
- Data logging up to 32GB on a microSD card (sold separately)
- Slim, stackable, super compact design
- Add up to 15 I/O modules for a total of 240 discrete I/O points or 120 analog I/O channels or expand remotely for an additional 512 discrete or 256 analog points (using P1-RX modules)
- Numerous I/O modules available including discrete, analog and high-speed I/O
- Low-cost high-speed counter and pulse width modulation modules for accurate control in pulsed I/O applications

GO TO:  
OVERVIEW PDF

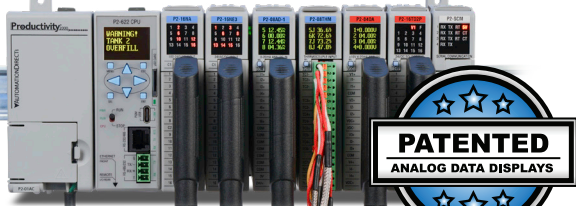
GO TO:  
TECH SPECS PDF



Looking for industrial open-source control?

GO TO:  
PRODUCTIVITYOPEN  
BROCHURE

### Productivity<sup>®</sup>2000



#### \$302.00 CPU with 5 built-in comm ports

The Productivity2000 PLC is where value meets power. This controller was designed to provide advanced features at an extremely affordable price and lowest cost of ownership in its class. Considering the memory, performance, options, free software, free support and everything else this controller has to offer, it really does stand above the competition.

#### Top hardware features:

- 50MB user memory easily handles complex applications
- 5 built-in communication ports including: (1) plug-and-play USB programming port, (1) general purpose Ethernet 10/100Mbps port, (1) remote I/O Ethernet 10/100Mbps port (can be used as an additional general purpose Ethernet port w/ P2-622 CPU) and (2) serial ports
- Data logging up to 32GB on a microSD card (sold separately)
- Programmable 4-line OLED message display on CPU for system status and tag data readouts and user defined messages
- Patented OLED displays on select analog modules for real-time, no meter required measurements

#### Micro-modular rack-based system

- Full lineup of over 50 discrete, analog, and high-speed I/O modules
- Accurate high-speed control using HSI, HSO, and HSC modules
- Pulse width modulation modules for precise control in applications requiring PWM signals
- Up to 480 local I/O points and 4,320 total I/O through remote expansion (using P2-RS and/or P1-RX modules)
- Hot-swappable I/O, no module placement restrictions, no power budget limitations
- Select modules are ABS certified for marine applications (standard of excellence in marine and offshore classification)

GO TO:  
OVERVIEW PDF

GO TO:  
TECH SPECS PDF

### Productivity<sup>®</sup>3000



#### Expansive I/O and 7 built-in comm ports

The Productivity3000 PLC is a communications powerhouse with numerous networking options built in. It's also the I/O leader of the group with over 59,000 I/O points possible through local and remote expansion.

#### Top hardware features:

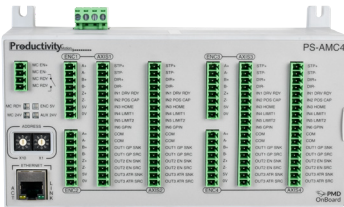
- 50MB user memory easily handles complex applications
- 7 communications ports built in including: local expansion and dual Ethernet ports
- Data logging to external USB drive
- Programmable 4-line LCD message display on CPU for system status and tag data readouts
- Patented LCD displays on all analog modules for real-time, no meter required measurements

#### Modular rack-based system

- Over 30 discrete, analog, and specialty PLC I/O modules including high-speed
- High-density I/O modules - up to 64 discrete I/O points per module
- Accurate high-speed control using HSI and HSO modules
- Support for local expansion and remote I/O bases, up to 59,840 I/O points (plus additional networkable Modbus and EtherNet/IP field I/O)
- Hot-swappable I/O, no module placement restrictions, no power budget limitations

GO TO:  
OVERVIEW PDF

GO TO:  
TECH SPECS PDF



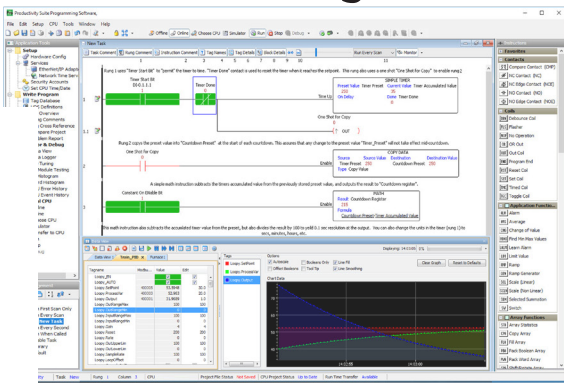
#### PS-AMC - Enhanced motion control exclusively for Productivity systems

The PS-AMC motion controller is designed to work effortlessly with select Productivity CPUs. The AMC provides accurate, synchronized, motion control on up to four axes and is easily configured within Productivity Suite using built-in motion instructions.

GO TO:  
OVERVIEW PDF

GO TO:  
TECH SPECS PDF

## Productivity<sup>®</sup>Suite



#### Full featured PLC programming software with no strings attached

No more "pay as you go" software with an annual subscription year after year...this is **FREE software - developed and supported in the USA.**

#### Top software features:

- Project simulator for easy logic verification/testing
- EDS file support for easy EtherNet/IP device setup
- User defined structure data types
- Tag-based programming with no pre-defined memory addresses
- Auto-discover local and remote PLC bases, Protos X field I/O, PS-AMC motion controllers and GS series drives
- Integrated StrideLinux VPN support
- Advanced "fill-in-the-blank" instructions including application specific commands
- Variable communications instructions for on-the-fly connection changes
- Helpful Data view, I/O view, Graph view, and histogram dialogs for insight into system performance
- Task Manager for increased efficiency
- ProNET networking for easy CPU data sharing
- Tag database export to C-more HMI
- Tag I/O reassignment to simplify offline configuration
- Easy project conversion to/from each PLC in family
- Project and database compare feature
- Web server and mobile access

Visit [www.ProductivityPLC.com](http://www.ProductivityPLC.com) for complete details and **FREE software download**





# Fast programming with FREE software...

## Developed in-house with customer feedback

Productivity Suite is our FREE programming software for the Productivity Series of controllers. Our own engineers developed this software at our headquarters near Atlanta, Ga. It was designed with input from our technical service team who communicate on a daily basis with our customers. As a result, Productivity Suite was built to meet the needs of our customers and it provides a quick, user-friendly way to program our Productivity family of PLCs. Based on customer feedback we have continually improved our software since its first release. Now Productivity Suite is even better with numerous features added to make your Productivity Series programming even more productive.

## And it's FREE!

That's right, get all of the benefits without any extra cost. Forget licenses or licensing fees, download the software to as many PCs as needed or take it for a test drive and try it before you buy it. After all, you bought the controller, why pay more to control it?

Compare our FREE price to the \$2,829\* per user, per year retail price of the Studio 5000 Full Edition software used with the \$5,070\* Allen Bradley CompactLogix PLC CPU (1769-L33ER) and ask yourself what exactly you are paying so much for.

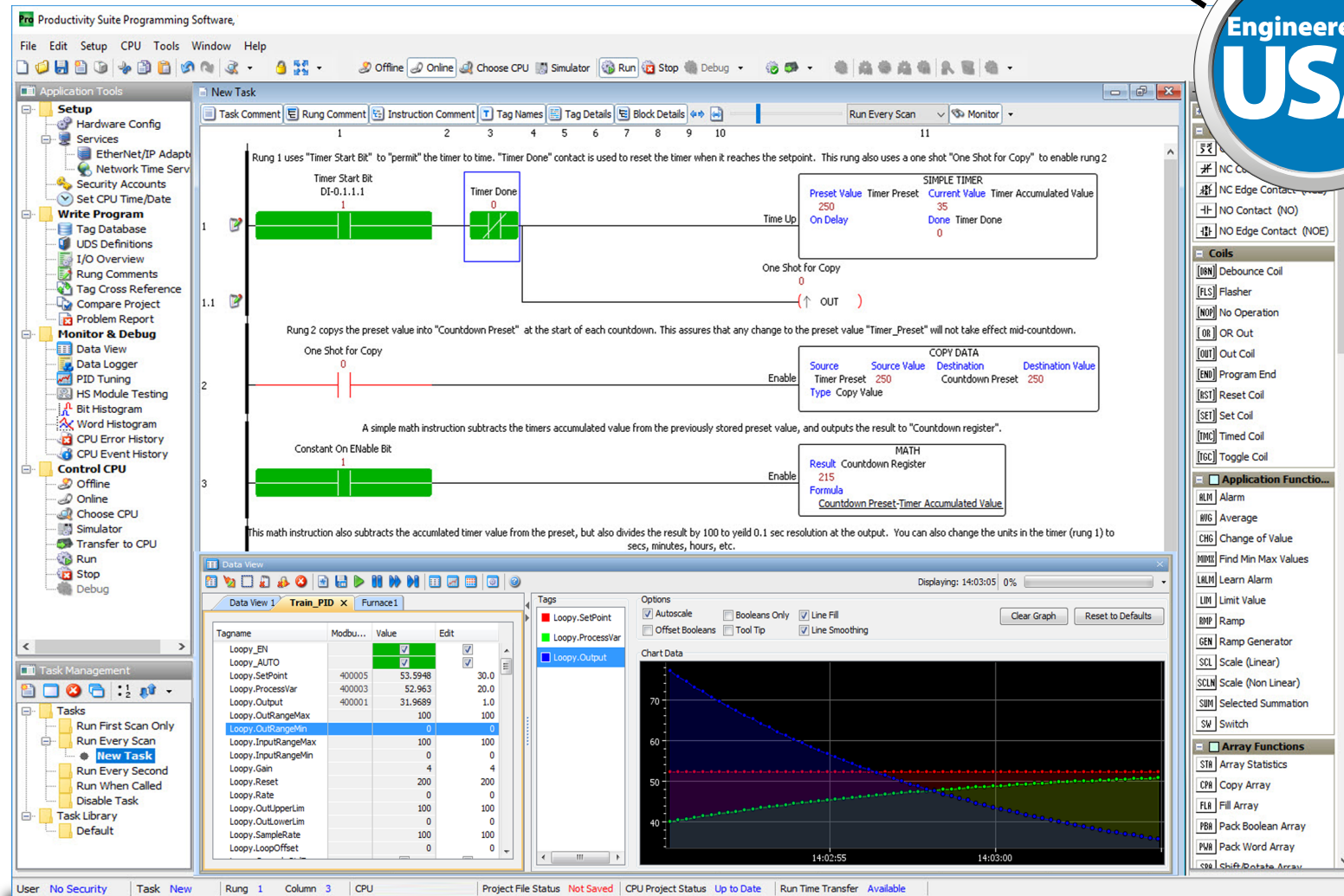
FREE SOFTWARE



**FREE Software!**  
Download as often as you need.  
No license or key needed.  
[Click here to download.](#)

Get more than you paid for with Productivity!

# Productivity Suite



## Tag name based control that's powerful and easy to use

Don't let your controller control you. With Productivity Suite you have the freedom to define user tags with no limits or fixed boundaries. Configure timers, counters, integer words or any other data types you decide on. With tag name based programming, there are no pre-defined, fixed memory maps and no wasted, unused memory allocations.

- No limits on PID loops\*\*
- No limits on Counters\*\*
- No limits on Timers\*\*

\*\*Limited only by the available memory in the PLC.

Tag name based control also offers the ability to descriptively identify the tags in your program. Older, fixed memory controllers force the use of pre-defined nomenclature for the data types. Which would you rather see when troubleshooting: T4:01 or Oven1 Purge Timer.Pre? The tag name helps identify the element as a numeric value for the oven purge timer's preset, making its purpose immediately clear. In addition, the tag database format of the Productivity Suite software can be easily shared between other tag name-based systems. HMI, SCADA and data logging devices with tag name based software can be configured with ease by simply exporting the tag database from Productivity Series and importing it directly into these devices.



\*Allen Bradley hardware price taken from www.radwell.com 9/30/22.  
Allen Bradley software price taken from www.rockwellautomation.com 9/30/22.



FREE software with built-in efficiencies

Module Conversion

The following table shows the modules that will be converted or deleted from the configuration.

**Note:** New module column lists the direct conversion. If a row is highlighted, the module has no direct conversion and will be removed from the configuration.

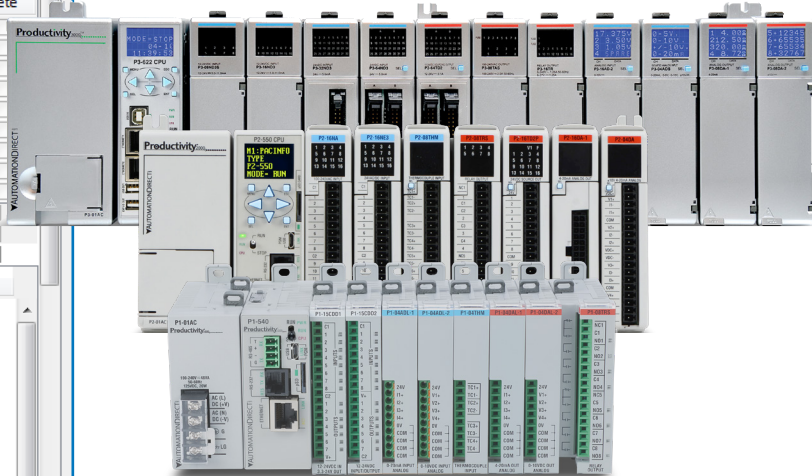
**Note:** After converting, you can manually add or discover new modules in the configuration and reassign those tags for the new modules.

**Note:** Tags assigned to the deleted modules will be:  
1. Deleted by default if they are not marked as "In Use",  
2. Converted to internal tags renamed with the prefix "Was\_" if they have default names, or unchanged if they have custom names, and they are marked "In Use".

Group	Base	Slot	Current Module	New Module	In Use	Delete Tags
0	1	0	P3-550	P2-550		
Current Tagname I/O Address New Tagname In Use Delete						
MST-0.0.0.1 MST-0.0.0.1 MST-0.0.0.1						
MST-0.0.0.2 MST-0.0.0.2 MST-0.0.0.2						
MST-0.0.0.3 MST-0.0.0.3 MST-0.0.0.3						
MST-0.0.0.33 MST-0.0.0.33 MST-0.0.0.33						
MST-0.0.0.34 MST-0.0.0.34 MST-0.0.0.34						
MST-0.0.0.35 MST-0.0.0.35 MST-0.0.0.35						
MST-0.0.0.65 MST-0.0.0.65 MST-0.0.0.65						
MST-0.0.0.66 MST-0.0.0.66 MST-0.0.0.66						
MST-0.0.0.67 MST-0.0.0.67 MST-0.0.0.67						
0	1	1	P3-16NA	P2-16NA		
0	1	2	P3-16ND3	P2-16NE3		
0	1	3	P3-08AD	<To Be Removed>		
Current Tagname I/O Address New Tagname In Use Delete						
AIS32-0.1.3.4 AIS32-0.1.3.4						
AIS32-0.1.3.7 AIS32-0.1.3.7						
MST-0.1.3.25 MST-0.1.3.25						
MST-0.1.3.26 MST-0.1.3.26						
MST-0.1.3.57 MST-0.1.3.57						
MST-0.1.3.58 MST-0.1.3.58						
MST-0.1.3.59 MST-0.1.3.59						
MST-0.1.3.60 MST-0.1.3.60						
MST-0.1.3.61 MST-0.1.3.61						
MST-0.1.3.62 MST-0.1.3.62						

Select OK to convert and delete the modules, or Cancel to quit.

OK Cancel Help



Productivity Suite

Easy project conversion

Productivity Suite software was designed to work with any controller in the Productivity family. Easily convert existing projects from Productivity3000 to Productivity2000 to Productivity1000 or vice versa using the integrated conversion utility.

Tag I/O reassignment

Start programming now! Tag I/O reassignment allows you the freedom to develop your code now and assign your I/O later. Create your user tags offline and swap them out for the default tags once the hardware is available.

Graphical I/O view

The I/O View gives you a quick and friendly way to monitor all hardware points in a system. Force discrete points on and off or edit raw analog values easily with this tool.

Hardware Configuration

Read System Configuration Default I/O Tags for New Modules New Configuration Convert To Help

CPU GS Drives Ethernet/IP

Local Base Group

Productivity

16PT INPUT, 100-240 VAC

Automatic Module Verification

No Verification and Enable Hot Swap

Add Default Tags Remove Default Tags

Point User Tagname

1 New I/O Tag

2

3

4

5

6

7

Data View

1 - P2-07B (Local Base Group, Base 1)

P2-16NA (Slot:1)	P2-16NE3 (Slot:2)	P2-08AD-1 (Slot:3)	P2-08THM (Slot:4)	P2-04DA (Slot:5)	P2-16TD2P (Slot:6)	P2-08TRS (Slot:7)
1 360.0	1 0	1 360.0 36,000	1 1400.0 1,400	1 0 0	1 0 0	1 0
2 0	2 0	2 0 0	2 0.0 0	2 0 0	2 0 0	2 0
3 0	3 0	3 0 0	3 0.0 0	3 0 0	3 0 0	3 0
4 0	4 0	4 0 0	4 0.0 0	4 0 0	4 0 0	4 0
5 0	5 0	5 0 0	5 0.0 0	5 0 0	5 0 0	5 0
6 45000	6 0	6 45,000 45,000	6 0.0 0	6 0 0	6 0 0	6 0
7 0	7 0	7 0 0	7 0.0 0	7 0 0	7 0 0	7 0
8 0	8 0	8 0 0	8 0.0 0	8 0 0	8 0 0	8 0

Advanced version control

Never lose track of who made what changes to what program and when. With the advanced version control in Productivity Suite, you can organize all of your PLC project versions in a Git repository and easily track any modifications to your projects, commit new changes, compare different versions, and even revert to a previous version if needed.

Huge Timesaver

10

ADVANCED VERSION CONTROL

Powerful user defined structures

User defined structures (UDS) are a powerful tool that helps speed up program development and improve uniformity of your logic. A UDS is a group of data types (BOOL, FLOAT, INT, pre-defined structures, etc.) which are defined by the user and re-used at will.

Productivity Suite allows you to embed arrays within the UDS definition, as well as, create arrays of structured tags so that you can programmatically index through your tag variables.

For example, `Mixing_Tank(1).Transfer_Pump(2).VFD.RUN_Command` which contains two nested UDS arrays (Transfer\_Pump and VFD) inside the Mixing\_Tank UDS definition.

Tags to show

Show All

Invert

Discrete Inputs

Analog Inputs

Integers

System Data

Booleans

Register2

Mach\_1

Discrete Outputs

Analog Outputs

Floats

Strings

Unused I/O

Module Status

PDS Structures

UDS Structures

A7\_Sol

Dip\_Tank

Search Tag Names Only

Editor

Name	Type	System ID	Cols	Retentive	Mod Start	Forceable	I...	Comment
Mixing_Tank	Structure, User, ID, Tank	AR1I1STRUC-000010	3					
Mixing_Tank(1)	AR1I1STRUC-000010(1)							Mixing_Tank(1).
Level	Integer, 16 Bit Unsigned	AR1I16-000009(1)						
Temp	Float, 32 Bit	AR1F32-000011(1)						
Mixer_On	Boolean	AR1C-000018(1)						
Color	String	AR1STR-000003(1)						
Transfer_Pump	Structure, User, ID, Transfer_Pump	AR2I1STRUC-000008...	3					
Transfer_Pump(1)	AR2I1STRUC-000008(1)							Transfer_Pump(2).
Transfer_Pump(2)	AR2I1STRUC-000008(2)							
Flow_Rate	Float, 32 Bit	AR2F32-000003(1)						
Vibration_Sensor	Integer, 16 Bit Unsigned	AR2I16-000009(1)						
VFD	Structure, User, ID, VFD	AR2I1STRUC-00000...						VFD.
Running	Boolean	AR2C-000026(1)						
Stopped	Boolean	AR2C-000027(1)						
Faulted	Boolean	AR2C-000028(1)						
Run_Command	Boolean	AR2C-000029(1)						
Speed_Command	Integer, 16 Bit Unsigned	AR2I16-000010...						
Actual_Speed	Integer, 16 Bit Unsigned	AR2I16-000011...						
HP_Rating	String	AR2STR-000005(1)						
Transfer_Pump(3)	AR2I1STRUC-000008(1)							
Mixing_Tank(2)	AR1I1STRUC-000010(2)							
Mixing_Tank(3)	AR1I1STRUC-000010(3)							

Add Tags Delete Tags Retentive Memory: 0 of 491520 bytes Forceable tag count: 9 of 64

Reset Table Help

Project Properties

General Settings Modbus Server Settings Version Control

Enable project version control

Repository Location

C:\Productivity Projects\Version Control

Repository Checklist

- OK - The existing repository at the selected location will be
- OK - Location is not the drive's root (i.e., 'C:\')
- OK - Location is not a subfolder inside an existing repository
- OK - Location does not have a subfolder that is an existing

Commit Changes to Repository

Repository Location

C:\Productivity Projects\Version Control

Commit Message

Initial Commit

Files Changed

Include File

Lane1Controller.adpro

None This Project Untracked Inverse

History Log

Commit History (Right-click a commit entry for more options)

Show for: Only this project

Date	Author	Commit Message
Apr 14 2025 11:47:33 AM	tensminger	Updated fire pump and gate control
Apr 14 2025 11:46:50 AM	tensminger	Added pump 3 tasks
Apr 14 2025 11:45:22 AM	tensminger	Initial Commit

Commit Message

Added pump 3 tasks

Files Affected by Commit (Right-click a file entry for more options)

File	Extension	Status
Lane1Controller.adpro	.adpro	M11:17

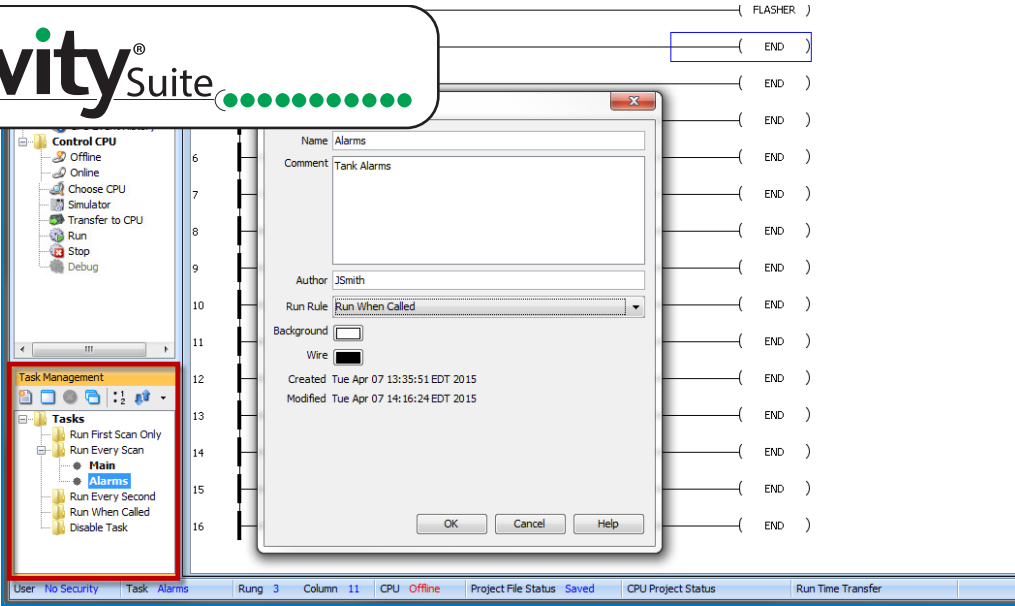


# FREE software that makes you more proficient!

## Productivity Suite

### Task management options for increased efficiency

The Task Manager helps organize and execute program code for maximum speed and efficiency. Create functional tasks, name them, and schedule their execution frequency - every scan, every second, or when called.

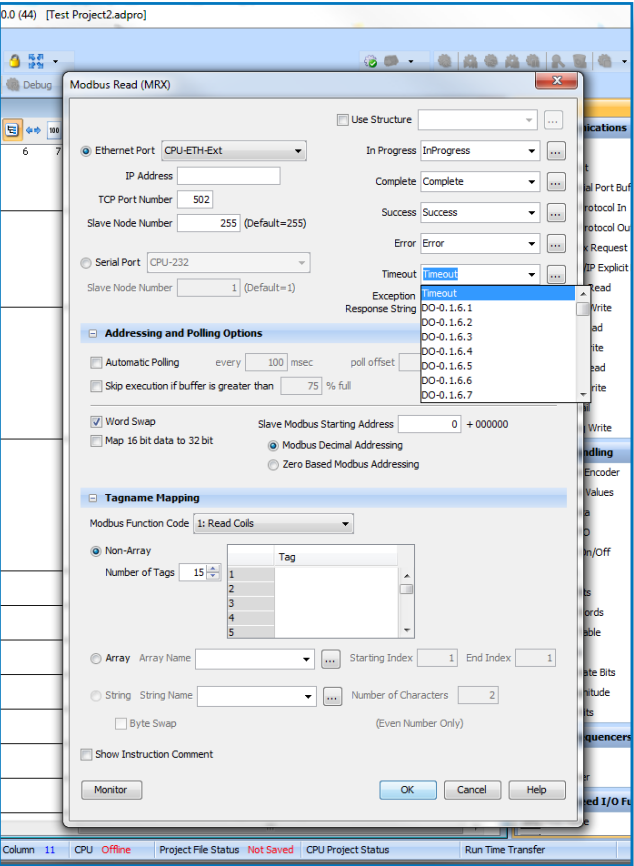
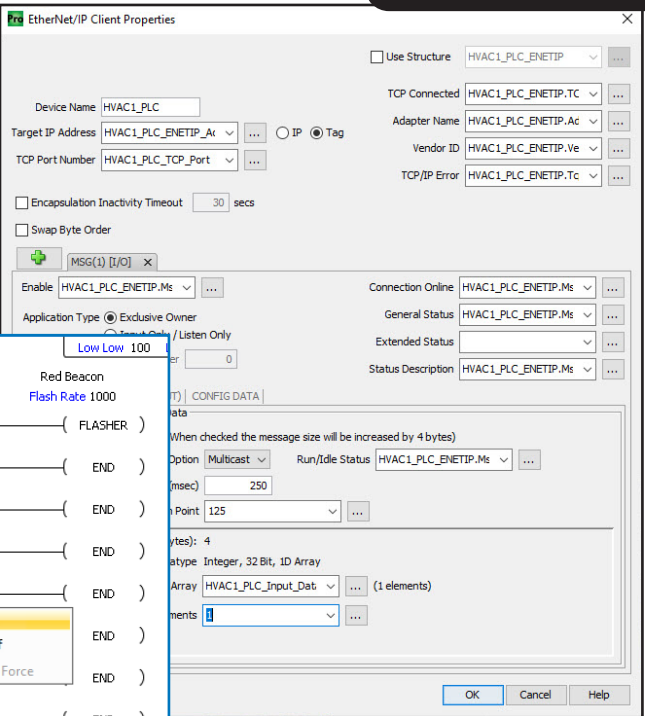
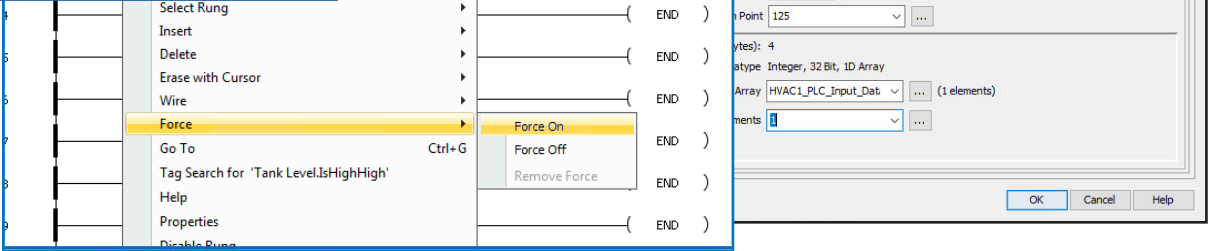


### Variable communication

Productivity Suite provides utmost flexibility when it comes to PLC communication and with the Variable Communications Instructions (VCIs), you can reconfigure your communication links with simple tag value changes. By using tags in the parameter fields of Modbus, serial, EtherNet/IP, MQTT(S), etc. configurations, you can dynamically modify the messages, target IP addresses, and other connection parameters from the ladder code or directly from a connected HMI.

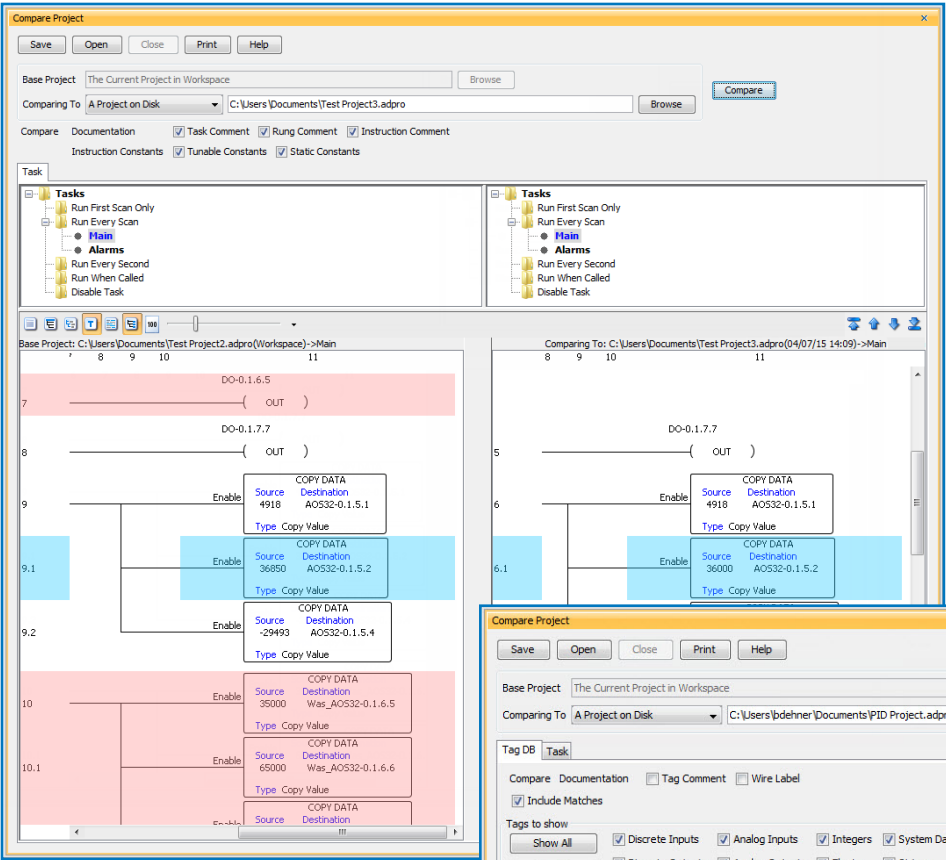
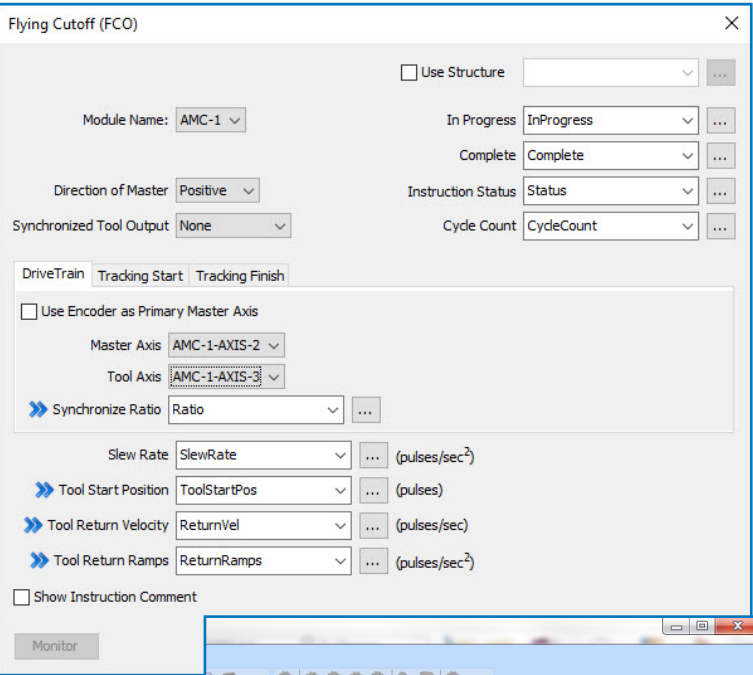
### Force from ladder functionality

Turn forcing on or off right from the ladder view. Right click any contact or coil in the rung and turn the force on, off or remove the force all together.



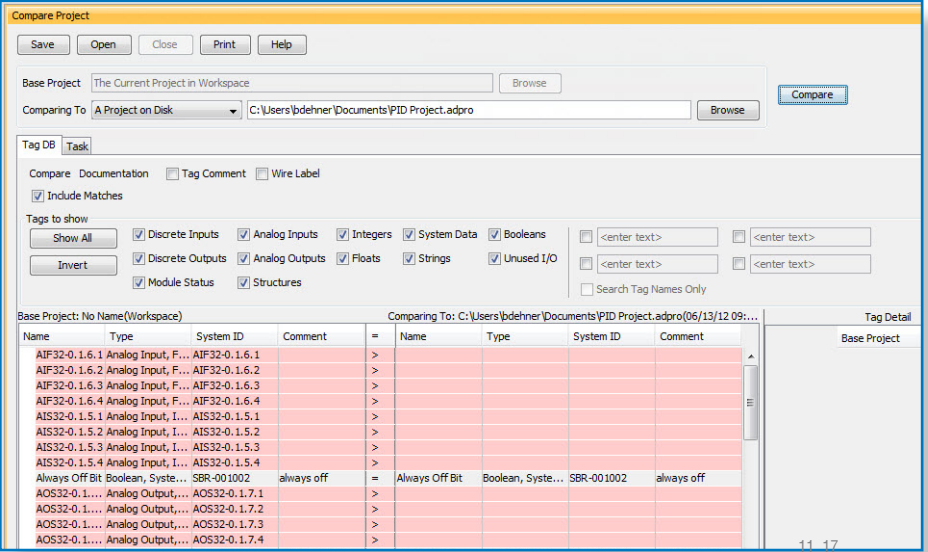
### Convenient fill-in-the-blank style function blocks w/ application specific commands

Math, PID, array, communication, data handling, high speed and application function blocks are available and easily configured with user friendly selections.



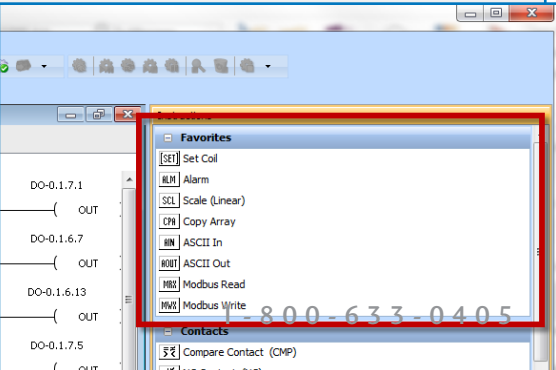
### Project compare... go online with confidence

Unequal code? Find out why with the Productivity Suite's Compare Project function. Perform project-to-project comparisons and get detailed information on the differences.



### Helpful favorite instructions list

Speed up your programming time by placing your most commonly used instructions in your Favorites list, where they are readily available and easily accessible.





# FREE software that gives you a head start

Productivity Suite was designed with many features intended to work hand-in-hand with certain field devices and third party software. This level of integration gives us a clear advantage over many other programmable controllers and is intended to help with system development.

## Auto-discover GS series drives

When connected to the P1000, P2000 or P3000 CPU's Remote I/O port via an Ethernet connection, GS series drives are auto-discovered in the controller's hardware configuration. All drive parameters can then be edited from within the Productivity Suite software. The system can also be configured to write these parameters to the drive with each program transfer, making troubleshooting and replacement in the field a cinch!

## ViewMarq displays

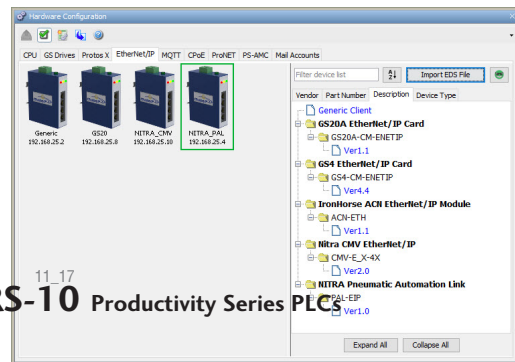
The integrated VMW function block instruction was created specifically for communication with ViewMarq message displays. This instruction provides all the needed parameters and even simplifies string creation by allowing you to copy and paste data from the ViewMarq configuration utility.



ViewMarq LED Message Displays

## EDS Library

The EDS file library offers a powerful way to organize and sort your EDS files - automatically group by device type or vendor and manage versions. AutomationDirect.com EtherNet/IP EDS files come already installed for added convenience.

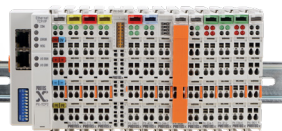


## GS Series Drives (with GS-EDRV100 Ethernet interface or optional Ethernet module)

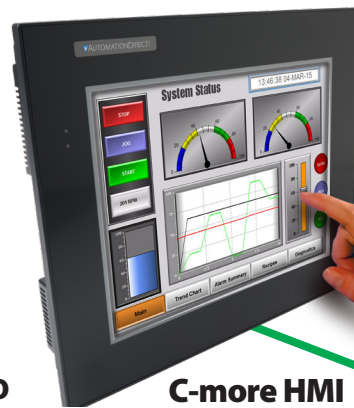


## Auto-Discovered

## Field/Remote I/O



## C-more HMI Touch Screen



## Share your database and speed up development

Productivity Suite's tag database can easily be exported to a .CSV file and then imported into other devices/software that use the same tag naming convention including C-more HMIs. This can provide valuable time savings with project development and help ensure deadlines are met.

## Shared Tag name database

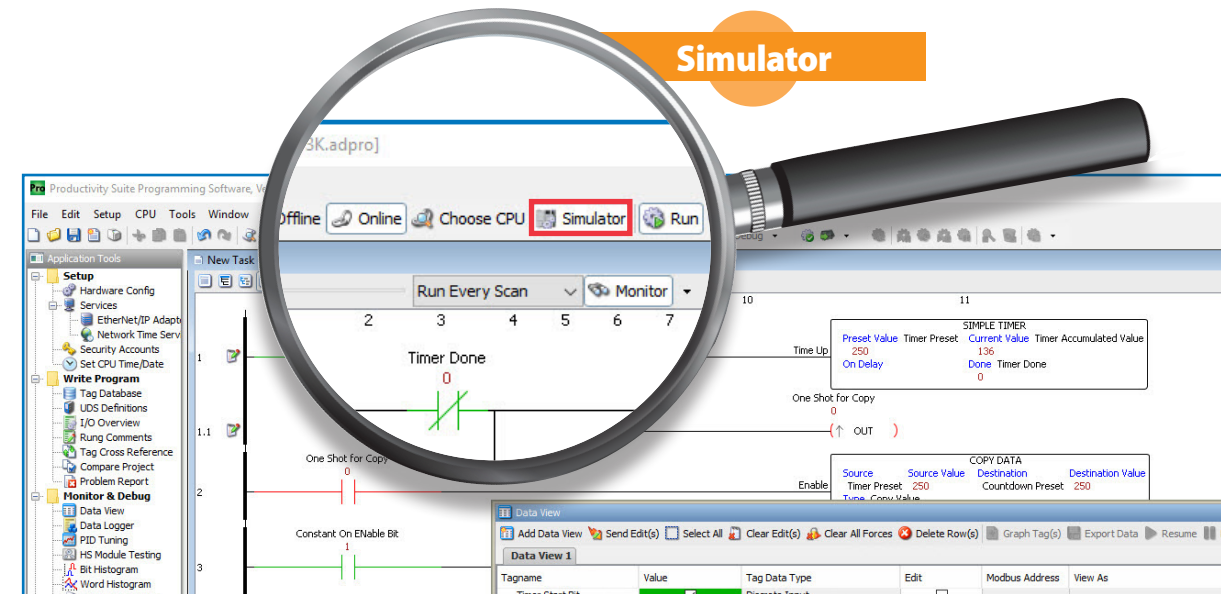
## HMI/SCADA



## HMI/SCADA

Easily import tags into SCADA software for quick and easy additions to existing projects or to speed up new project development.

## Simulator



## Why wait, when you can simulate?!

There is no better way to get a head start on project development than building code ahead of time with the assistance of a project simulator. Now you can start your logic early and verify it's operation even before the hardware has arrived!

Simply select the "Simulator" option in the toolbar, transfer your code as you would with a real CPU, turn on monitoring and/or open a Data View window, and start testing your code. This tool will come in handy not only with new builds but also when maintaining existing systems.

With the Productivity Suite simulator you can verify the effects of code changes before implementation, replicate fault conditions to test code stability, or try out new programming techniques/methods for greater efficiency. This can jump-start your project development on the front end and reduce unexpected errors with systems that are already live.

## Simulator supports:

- Analog or Discrete I/O simulation
- Data View monitoring
- Modbus TCP/IP, EtherNet/IP and C-PoE (custom protocol over Ethernet)
- Ignores unsupported instructions

## EtherNet/IP devices

Easy-to-use scanner and adapter configuration windows, as well as an MSG function block instruction for Explicit Message setup and control, connect EtherNet/IP devices quickly.

## Serial & Ethernet MODBUS devices

## Modbus devices

When talking to Modbus devices over serial or Ethernet, the Modbus Read (MRX) and Modbus Write (MWX) instructions make it easy to get connected.

## Auto-discover PS-AMC motion controllers and program with ease!

Connect up to four PS-AMC motion controllers to your Productivity CPU (dependant on CPU chosen) and they will automatically be added to the hardware configuration for that CPU.

In addition, Productivity Suite has numerous instructions designed into the software, including flying cut-off and rotary table instructions, that allow you to program complex, coordinated motion profiles in no time.



# FREE software that's field friendly

## Data View tools

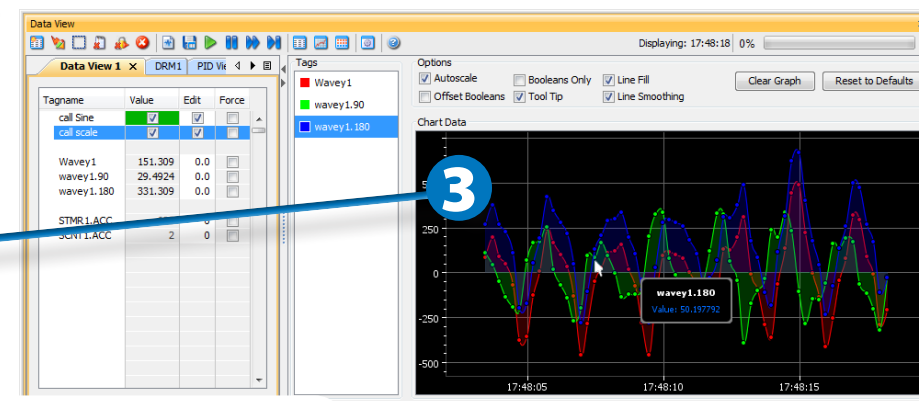
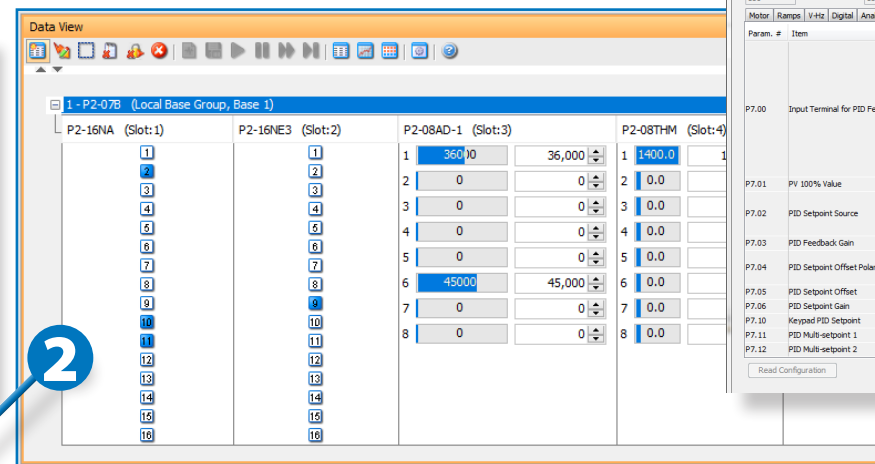
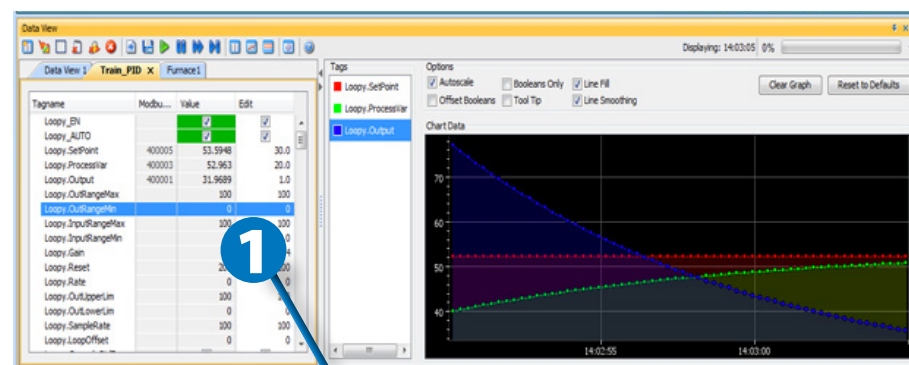
The Data View feature gives you three unique tools in one and each provides invaluable assistance when troubleshooting.

**1.** The basic Data View window lets you monitor, edit and force all tag values regardless of data type. Boolean, signed or unsigned integer, bit of word, string tag, or structure, you can view and edit them all right here! You can also configure each Data View tab to monitor entire instructions, view all forcible tags, view all Modbus address, etc.

The Data View panel is a modal window, meaning that you can change its position in the software layout: dock it, tab it, pin it or float it. You can even drag it outside of the programming software for added usability.

**2.** I/O View is an optional view that gives you a graphical representation of your current hardware configuration. You can easily scan your hardware configuration module-by-module with full editing and forcing capabilities. Force discrete points and change analog I/O values right from this window.

**3.** Graph View is a simple trend graph that you can set up quickly for instant feedback. Drag tags right from your Data View into the Graph view and configure as needed.



## Helpful tag names

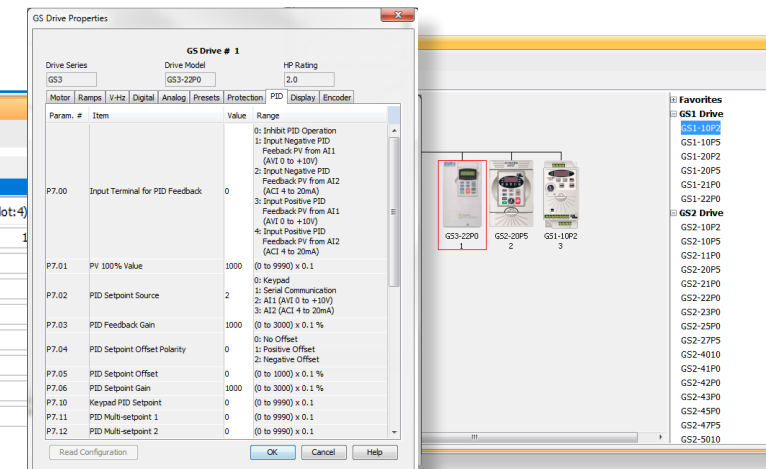
Tag name based controllers provides you with a higher level of documentation than a typical fixed address PLC. When troubleshooting a system or application, it is always easier to identify a physical input, output or even an internal memory location if it has a real-world name. Consider this: X15, I:4/3, C200, B3:0/2 mean very little with respect to what they are actually related to in your process. However, 'System\_Start\_PB1', 'Auto\_Mode\_SW1' or 'Batch\_Seq\_Enabled' are very clear and concise. These common descriptors can be added to a fixed memory address but a tag name based controller makes it simple by embedding the description into the tag. This allows for better naming conventions and results in a more well-written and documented program.

1-800-633-0405

## Configure replacement drives instantly!

One of the more powerful features of the Productivity Series controllers is the integrated GS series drive configuration capability. Not only can Productivity Suite auto-discover newly installed drives and provide all parameters needed for drive configuration, but you can also save drive configurations in the project, eliminating the need for manual configuration of the drive parameters on the keypad or using yet another configuration utility.

Consider the downtime you could save when replacing a drive in the field, if all it took was a simple download to configure the replacement drive exactly like the one you just removed.



## Runtime edits

Commissioning or troubleshooting a system can be less time-consuming if you can make program edits on the fly. Download edits to the CPU without pausing I/O updates or stopping/restarting the program. From melting rubber to making paper, you can keep your process running, avoiding downtime and product waste.

## Built-in data logging

Knowledge is power, especially when troubleshooting! Having historical data available to you when trying to find or correct an issue can make a huge difference. The micro SD card or USB slot on the Productivity CPU allows you to log up to 32GB of tag data. This data is saved in .CSV format on a removable micro SD card or USB pen drive and can be easily downloaded to your PC or the most current data log can be emailed via the Send Email instruction.

You can also access the data via a standard browser using the CPU's built-in Web server. Once enabled, simply enter your CPU's IP address into a browser's address bar, enter the appropriate security credentials when prompted, and you have access to system data (error history, CPU status, scan time, etc.) and any data log files. You can view, download or delete these files through the Web browser. This gives you a quick and convenient troubleshooting tool that you can use to track historical patterns, examine equipment performance, or record data from a newly installed repair.



**If you need assistance, give us a call. Our technical support staff is highly-trained, field-experienced and always happy to help. 1-800-633-0405**

www.automationdirect.com/productivityseries

Productivity Series PLCs PRS-13



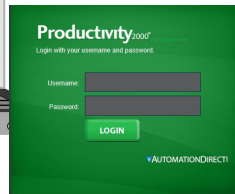
# FREE software that keeps you connected

## At the office...



### Web Server

With the Productivity CPU's integrated Web Server, you can access Data Logger files stored on an installed flash device (optional) as well as monitor system status via the (read-only) System Tags.



## ...or on the go!



### Apple iOS PACDATA app

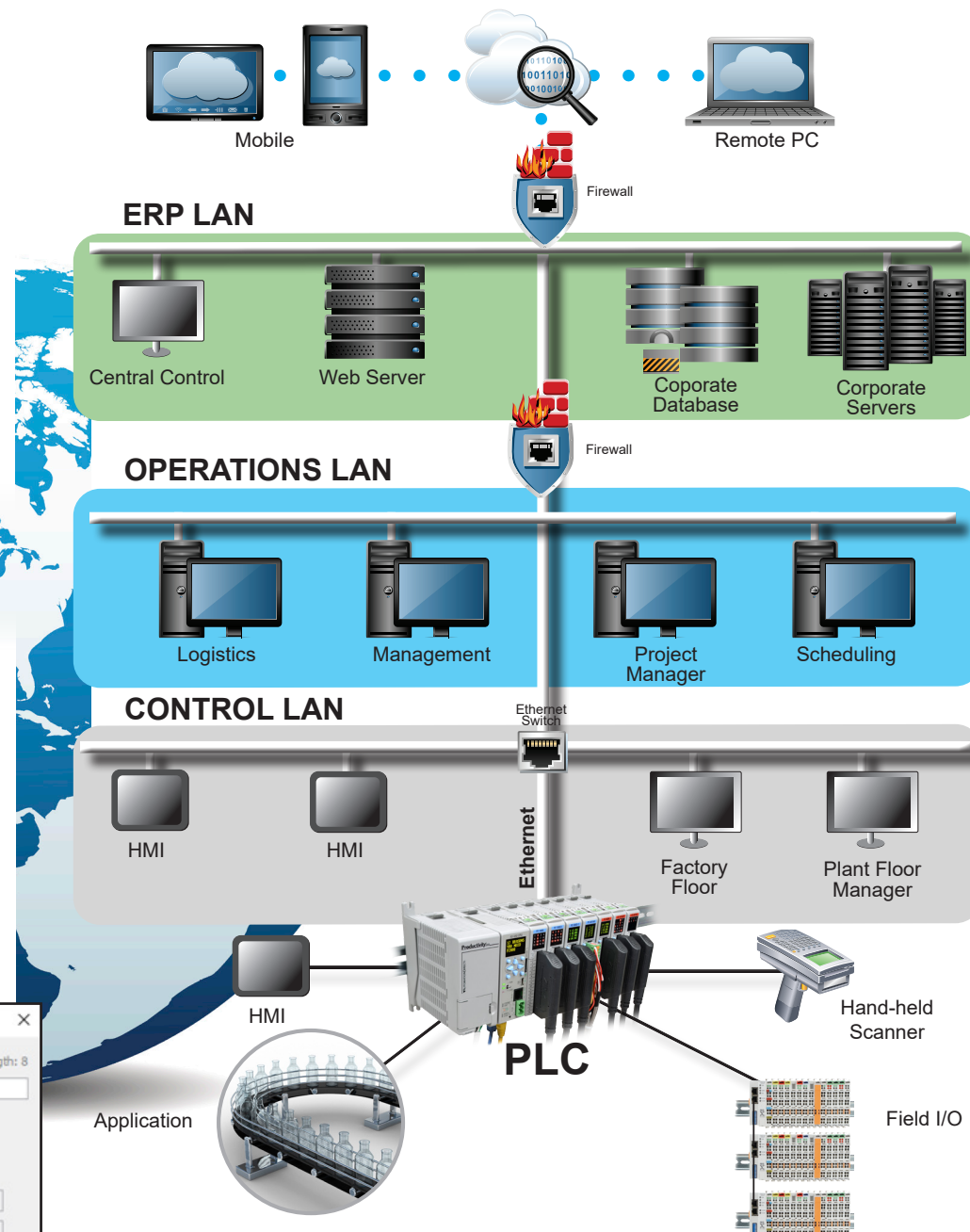
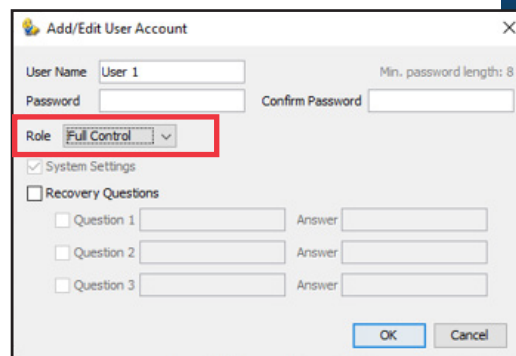
The FREE PAC/PLC Data Remote Monitor App allows you to connect to remote systems from a Wi-Fi or cellular network connection. The Remote user can monitor the local PLC system and user tags configured for remote access inside the tag database of the controller.



The MQTT protocol has become the frontrunner for many machine-to-machine (M2M) and IIoT/cloud networking applications, due to its lightweight overhead and reduced bandwidth consumption. Productivity PLCs support MQTT communication (the P3-622 and P2-622 CPUs also support the more secure MQTTS protocol) and with Productivity Suite's fill-in-the-blank MQTT messaging configurations, delivering vital data to advanced cloud computing platforms is easy.

## Easy access control

The Productivity Suite software has several remote access security features built in including project file encryption and user roles. User roles allow you to control who has access to the project file and what they can do with it. Full control, full monitor, limited monitor, and read only are some of the roles available and they can be easily set from the User Account dialog.



**From Factory Floor to anywhere in the world.**

## Secure VPN integration

Cybersecurity is an important part of modern day control systems and ProductivitySuite makes connecting to your remote PLCs through a StrideLinx secure VPN much easier. StrideLinx provides end-to-end secure remote connections using wired, wireless and/or 4G LTE capable VPN routers. ProductivitySuite makes it simple to securely connect to remote PLCs using StrideLinx by incorporating StrideLinx connection options directly into ProductivitySuite's Connection Dialog.

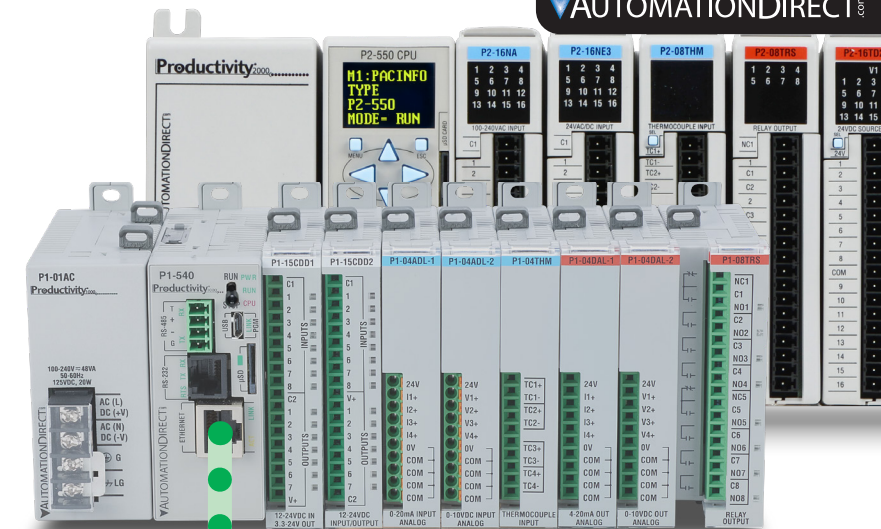
# StrideLinx

[Click here to learn more](#)

**StrideLinx VPN Router**  
starting at  
**\$400.00**  
(SE-SL3001)



The CPU Connections dialog shows the available CPUs on the network including those available through a StrideLinx secure VPN connection. To connect to one of these controllers just simply select it and click on the Connect button as you would any other CPU, enter your login credentials and that's it. No need to open StrideLinx software, log in, and configure the connection, it's all done inside ProductivitySuite!



### Add Connection

#### Connection Type

StrideLinx Secure VPN

[Browse](#)

Company Name

VPN Device Name

PLC IP Address  [Verify](#)

Selecting the "StrideLinx Secure VPN" option in the Connection Dialog displays your list of StrideLinx company and VPN routers for easy selection.

### CPU Connections

[Refresh](#) [Done](#)

Connection Type	Device Part #	MAC ID	User Assigned CPU Name	IP Address	CPU Source	CPU Connection
Ethernet				192.168.140.55	StrideLinx VPN	Disconnected
Ethernet				192.168.0.50	StrideLinx VPN	Disconnected
Ethernet	P1-550	60 52 d0 06 5c 67	P1-550	10.11.0.55	StrideLinx VPN	Connected
Ethernet	P2-550	60 52 d0 05 5a a9	MoToM-P2-Drv-Rak	172.31.40.135	Auto-Discovered	Busy
Ethernet	P2-550	60 52 d0 06 33 3d	MoToM-P2 Reset	172.31.40.170	Auto-Discovered	Busy

### Connecting to PLC through StrideLinx VPN





# FREE software with a user-friendly programming environment

## Customizable layout

The Productivity Suite is organized into a set of fully-dockable and configurable "Panels". Dock them, un-dock them, and rearrange them to suit your programming style.

## Application tools

The Application Tools pane allows quick access to many of the advanced features of the Productivity Suite.

## Main ladder/task area

This is where you create your ladder program. Create/organize your Tasks in this area, and drag and drop instructions from the Instructions Pane. The Application Specific Instructions built in to the Productivity Suite will save you time, and ignite your productivity.

## Application-specific instructions

In Productivity Suite there are so many time-saving instructions, even application-specific instructions like Flying Cutoff, and they all have one thing in common - their "fill-in-the-blank" programming method. This method makes it easy to configure tasks that used to require a whole bunch of program code. With Productivity Suite you just fill in the blanks. How productive is that! This style of programming is offered for even the more complex functions - coordinated motion profiles, array functions, communications, PID, the list goes on and on.

The screenshot shows the Productivity Suite Programming Software interface. On the left is the 'Application Tools' pane with categories like Setup, Write Program, Monitor & Debug, and Task Management. The main area displays a ladder logic program with rungs and instructions. On the right is the 'Collapsible Categories' pane, which lists various instructions organized into expandable sections: Favorites, Coils, Application Functions, Array Functions, Drum Sequencers, High Speed I/O Functions, Math Functions, PID, Program Control, String Functions, and System Functions. A callout box titled 'Collapsible Categories' explains that instructions are organized into collapsible categories with a Favorites category at the top for frequently used instructions.



## Powerful task manager

Have you ever had to write custom ladder logic to get a section of code to only execute periodically and not every scan? Or code that only needs to run on the first scan? What about code that runs multiple times per scan?

With the Productivity Suite Task Manager you simply break up your ladder logic into separate tasks and then drag them into the appropriate categories. In the screen shot to the left, the task (or ladder logic routine) "Initialize" has been placed in the "Run First Scan Only" category, and will only execute once at start-up.

The task "Convert ms to min, sec" has been placed in the "Run When Called" category, and can be used multiple times throughout the scan. Use the Task Library to reuse code or keep actions consistent between projects. Got a clever way of doing something? Save the task to the library for later, and import it into a new program as needed. Productivity Suite even imports any included UDS you've made to make integration a snap!

Combined with the ability to make run-time edits, the Task Manager is a powerful coding and debugging tool. Keep a task in the "disabled" category while you are developing it, and then drag it into the "Run Every Scan" to test it. Place data collection and other periodic tasks in the "Run Every Second" category and improve the scan time of your main routine.

Give it a try - we think you'll agree - the Task Manager offers true productivity enhancement.

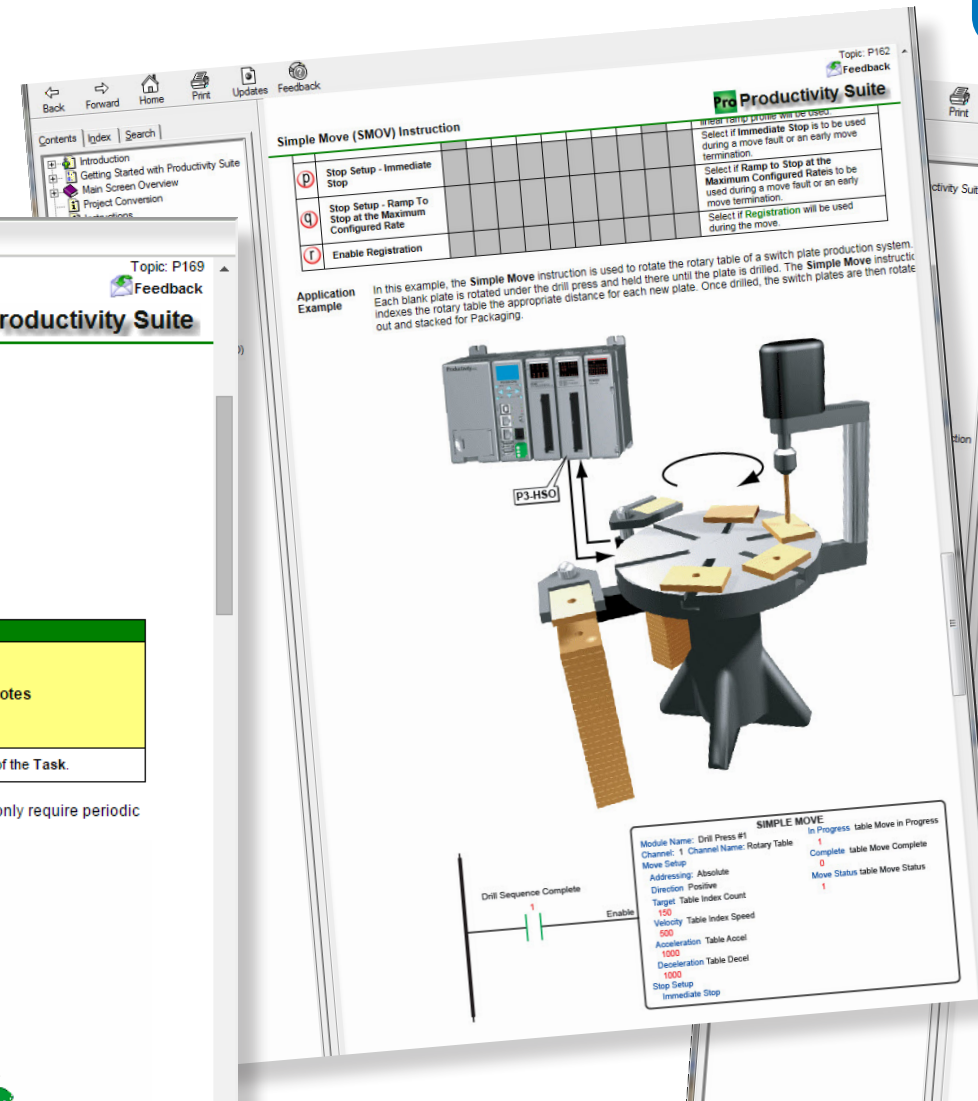
The screenshot shows the 'User Profiles' dialog box with a list of profiles: '2 monitor', 'all-in-one 1', 'all-in-one 2 (active)', 'Default', 'ladder-1 monitor plus', and 'ladder-1 monitor'. In the background, a laptop displays the Productivity Suite software interface. A callout box titled 'Convenient user profiles' explains that users can easily switch their programming environment between one configured for a multiple monitor office setup to an in-the-field commissioning one ideal for working on a laptop.



# FREE software that's helpful and that customers love

## Comprehensive help files

Help Files are always available with detailed information on hundreds of topics and the latest version is embedded within your FREE copy of Productivity Suite. If that's not enough, give us a call at 1-800-633-0405 between 9am - 6pm weekdays. Won't cost you a penny and we're always glad to help.



Click here to browse the actual help files that are in software

## AutomationDirect.com Headquarters

We're all here - our sales and technical support teams, purchasing, accounting, and of course our huge warehouses and logistics team - ready to serve you.

Our campus is located about 45 minutes north of Atlanta, GA, USA



## See what others are saying:

"This is an extremely powerful CPU for the money. Also the free productivity software is a breeze to program with as well as to connect to the PLC. I use to swear by Allen Bradley components and will never go back unless specified by the customer. I have applied the Productivity 2000 to many machines around our plant and plan on converting everything over time. We currently have approximately 10 of these around the plant and have never had an issue with a CPU."

Adam in KIRKVILLE, NY

"My go to PLC. The quality and performance is there. I have to use other brands of PLCs for one reason or another from time to time but this one is my favorite. Top 4 reasons I use this PLC... Small footprint, performance, great tech support and the software is by far the best out there. Everyone has a favorite and this one is mine. My second favorite is its bigger brother, but this one has so much hp, I don't have to call on him that often."

John in SIMPSONVILLE, SC

"Incredibly easy to use. Love the tag database, the several communication protocols available, the ladder logic is very user friendly. The price is outstanding. I've been replacing as much Allen Bradley PLCs as I can with these bad boys."

Domenic in GLOUCESTER, MA

See more reviews under the Reviews tab on any Productivity Series CPU's product page at [www.automationdirect.com](http://www.automationdirect.com)



# With AutomationDirect.com . . . you always get more than you paid for.



## Award-winning technical support at no cost to you!

As a direct seller of industrial automation products we strive to provide you with everything you'll need to get the job done. Manuals, help files, inserts, drawings are all available for free from our website, but for those times when you need more we do offer free technical support. Our technical support staff is field experienced, highly qualified and ready to assist you, and our service and support has won numerous awards. So before you sign an expensive service contract, check us out and see how we make it possible to get more than you paid for.



## See what others are saying:

*"Tech support is fantastic. They always get me pointed in the right direction. It's nice to call a company where the people on the phone don't just read pages from the manual, they can actively help solve your issue because they know how the systems work."*

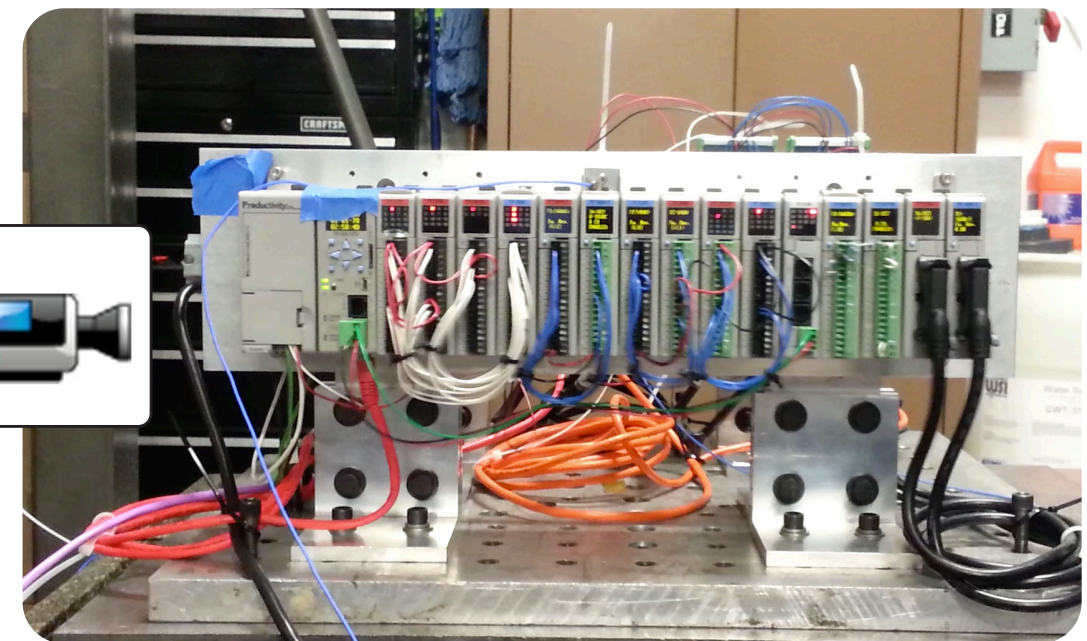
Adam in LAWRENCEVILLE, GA

## OEMs voted our name 15 years in a row!

The Reader's Choice survey hosted by Control Design magazine aims to identify the best products and service in the industry. Results indicate we consistently provide top-notch support to our customers. This is in addition to several other industry awards from independent publications.



Plus many more since our beginning in 1994



Online video of Productivity2000 QC vibration testing: <http://go2adc.com/pro-shake>

## Affordable hardware that is built to last

Despite what you may have heard from the competition, our products are built to withstand the harshest field conditions. Check out the video above to see the Productivity2000 get put to the test. As you can see, the Productivity2000's rugged design was thoroughly tested for field duty and we stand behind its performance with a 2 year warranty. Not only can Productivity Series controllers handle adverse conditions, but the 50MB of user memory also ensures that they have enough processing power to accommodate any future expansions you may need.

## FREE software - the way it should be!

You bought the controller, why pay more to control it? With Productivity, you always get what you need at no extra charge with the FREE feature-packed Productivity Suite software. Just check out what FREE will get you:

- Flexible tag name programming
- Convenient, fill-in-the-blank function blocks
- Application specific instructions including user-friendly motion commands
- Time-saving hardware auto-discovery feature
- Built-in Web server and mobile connectivity for remote access
- Powerful Task Manager for increased efficiency
- Custom user defined tag structures
- Detailed Data view and histogram functionality
- Much, much more...

**FREE  
SOFTWARE**



**FREE Software!**  
Download as often  
as you need.  
No license or key needed.  
[Click here to download.](#)



## Other Freebies

And don't forget we also provide absolutely free online PLC training through our training partner Interconnecting Automation at [www.automationdirect.com/plc-training](http://www.automationdirect.com/plc-training). This free training encompasses basic PLC fundamentals as well as Productivity Suite specific topics.



**Voted #1 in service for 15 years straight:**  
[www.automationdirect.com/awards](http://www.automationdirect.com/awards)

**Voted #1 mid-size company  
to work for in Atlanta:**  
[www.automationdirect.com/workplace](http://www.automationdirect.com/workplace)

**What our current customers think:**  
[www.automationdirect.com/reviews](http://www.automationdirect.com/reviews)





# Increase your productivity in more ways than one!

The Productivity Series offers a scalable controls solution with three low-cost hardware platforms and one FREE, powerful programming package. No matter the application, big or small, Productivity has the I/O, communications and affordability you need.



## Productivity<sup>®</sup>Series.....

FREE  
SOFTWARE



FREE Software!  
Download as often  
as you need.  
No license or key needed.  
[Click here to download.](#)

Click on part number (in second row) to be taken directly to AutomationDirect.com to check current pricing, stock status, tech specs, industry approvals, videos, photos and more ...

Feature	Productivity3000	Productivity2000		Productivity1000	
	P3-622 CPU	P2-550 CPU	P2-622 CPU	P1-550 CPU	P1-540 CPU
User Display on CPU	✓	✓	✓	---	---
Built-in USB Programming Port	✓	✓	✓	✓	✓
Built-in Serial Ports (RS-232 & RS-485)	2 (each configurable for RS-232 or RS-485)	2	2 (each configurable for RS-232 or RS-485)	2	2
Built-in Multipurpose Ethernet Ports (RJ45)	Up to 2*	1	Up to 2*	1	1
EtherNet/IP Protocol	✓	✓	✓	✓	✓
MQTT Protocol	✓ (also supports MQTTS)	✓	✓ (also supports MQTTS)	✓	✓
Modbus RTU (serial) & Modbus TCP (Ethernet)	✓	✓	✓	✓	✓
Remote I/O Expansion Rack Support	✓*	✓	✓*	✓	---
Local I/O Expansion Rack Support	✓	---	---	---	---
Max Productivity I/O Capacity	59,840 (using P3-RX and P3-EX modules)	4,320 (using P2-RS modules)	4,320 (using P2-RS modules)	752 (using P1-RX modules)	240 (local modules only)
Hot Swappable I/O	✓	✓	✓	---	---
Integrated GSDrive Support	✓* 32 max.	✓ 16 max.	✓* 16 max.	✓ 16 max.	---
PS-AMC Support	✓*	✓	✓*	✓	---
Data Port (data logging & project transfer)	✓ USB	✓ microSD	✓ microSD	✓ microSD**	✓ microSD**
Total Memory	50 MB	50 MB	50 MB	50 MB	50 MB
American Bureau of Shipping (ABS) Certification	---	✓	---	---	---
Price	\$550.00	\$361.00	\$299.00	\$268.00	\$237.00

\* For 2 multipurpose Ethernet ports, Remote I/O port must be configured for multipurpose use. Remote I/O port cannot be used for native remote I/O connections if configured for multipurpose Ethernet.  
\*\* Project transfer from the microSD card is not supported in the Productivity1000 CPUs.



# Huge Inventory! Order Today, It Ships Fast!

 **AUTOMATIONDIRECT**  
Warehouse C

Great people and automation go hand-in-hand to make it easier for you to get what you want, when you want it.



Get us your order by 6 p.m. EST and we'll ship in-stock items fast (depending on payment method and carrier requested; see Terms and Conditions online for complete details).

Most local distributors can't justify this degree of automation sophistication, or this amount of inventory.

## You say -

"I ordered today, you shipped today. Doesn't get any better than that. Thanks."

"Outstanding service, amazed at the speed of delivery!"

"It's easier and faster to order from you guys than any other online merchant that I use. Not only that, deliveries are consistently accurate and delivery time is dependable ... both KEY factors in our JIT processes."

