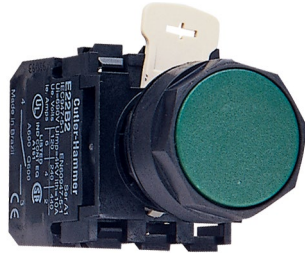


# EAT•N E22 Non-Illuminated Pushbuttons

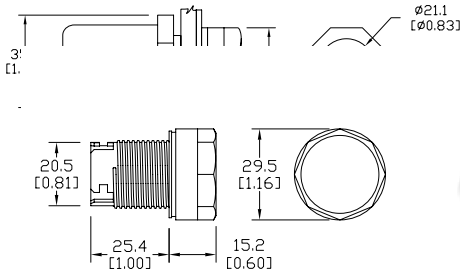
Cutler-Hammer

## Flush pushbuttons

Approximate dimensions in mm (in). See dimensions for "back-of-panel extensions" at the beginning of the E22 series section.



Dimensions: mm [inches]



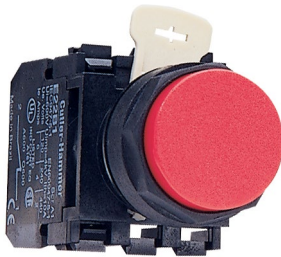
## Push-Push flush pushbuttons

Dimensions: mm [inches]

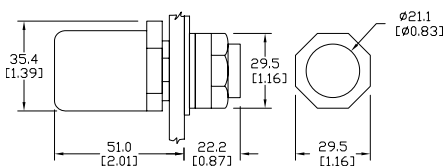


## Extended pushbuttons

Approximate dimensions in mm (in). See dimensions for "back-of-panel extensions" at the beginning of the E22 series section.

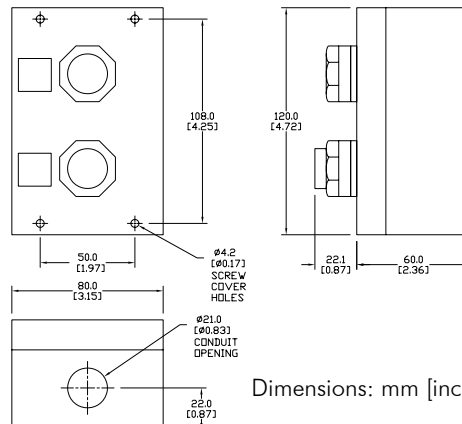


Dimensions: mm [inches]



## Control station

Note: Contact blocks sold separately, see E22 accessories section.



Dimensions: mm [inches]

Non-illuminated Pushbuttons			
Flush Button with Bezel			Price
Black	<b>E22PB1A</b>	Momentary pushbutton, black bezel, flush black button with <b>one N.O.</b> contact	\$17.00
Green	<b>E22PB3A</b>	Momentary pushbutton, black bezel, flush green button with <b>one N.O.</b> contact	\$17.00
Push - Push Flush Button, Operator Only			
Black	<b>E22PPB1</b>	Push to open, <b>push</b> to close, flush, operator only	\$8.50
White	<b>E22PPB5</b>	Push to open, <b>push</b> to close, flush, operator only	\$8.50
Extended Button			
Red	<b>E22EB2B</b>	Momentary pushbutton, black bezel, extended red button with <b>one N.C.</b> contact	\$16.50
Control Station - One Extended Button, One Flush Button			
Green-Red	<b>E22ASB204</b>	Control station: Flush, <b>Momentary</b> , green button (START) with <b>one N.O.</b> contact; Extended, <b>Momentary</b> , red button (STOP) with <b>one N.C.</b> contact Dimensions: mm(inches) H x W x D 120(4.72) x 80(3.15) x 60(2.36)	\$86.00

See specifications and mounting data at the beginning of this E22 series section.