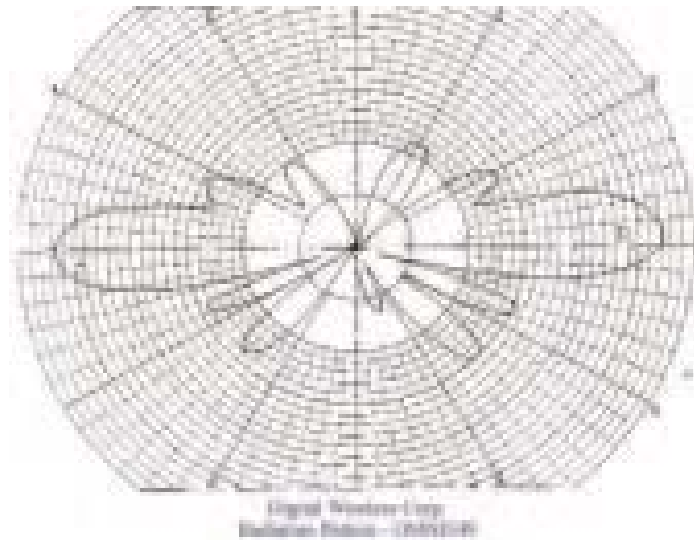


## Omni Directional Antenna

CR-OMN2409

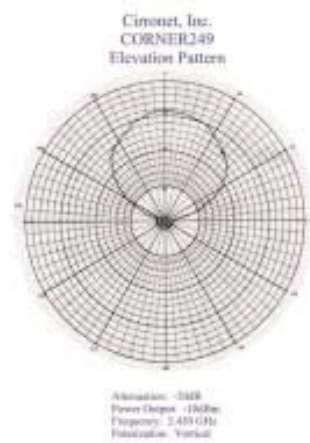
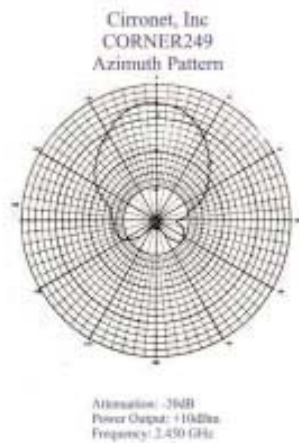
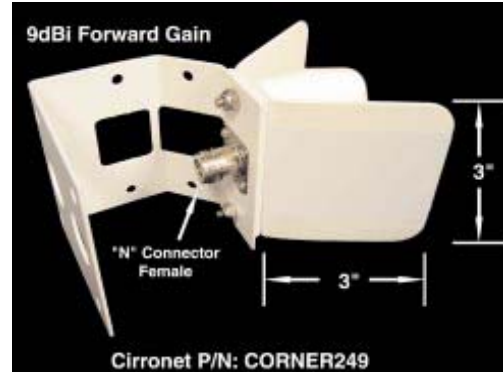
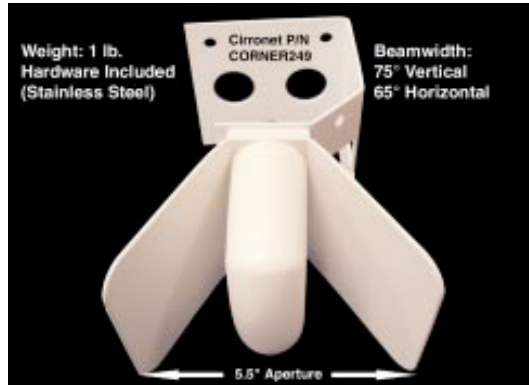
Specifications	Part # CR-OMN2409
Frequency Bandwidth	2.4 GHz
Gain	9dBi
Bandwidth @ 2:1 SWR	140 MHz
Nominal Impedance	50 Ohms
Max. Continuous Power	100W
Vertical Beam Width	14 Degrees
Wind Loading (Flat Plate)	30 Sq. In. (193.5 Sq.Cm)
Rated Wind Velocity	100+ Mph(160+ Kph)
Lightning Protection	External Suggested
Material (Radome)	Polycarbonate
Material (Feed)	Aluminum
Length	27 In. (68.5 Cm)
Weight	2.0 Lbs. (.9 Kg)
Antenna Diameter	1 In/2.5 Cm
Interface Connector	"N" Female
Mounting Kit	Included
	Cylindrical Mast <2" (<5 Cm)



## Corner Reflector Antenna

## CR-CRN2409

The CR-CRN2409 is a compact, high gain antenna that features a small aperture offering minimal wind resistance. It is a half wavelength element, has a universal mount and a rear connector feed. The split balun design provides high efficiency with a pattern that is not skewed.



### CR-CRN2409 Specifications

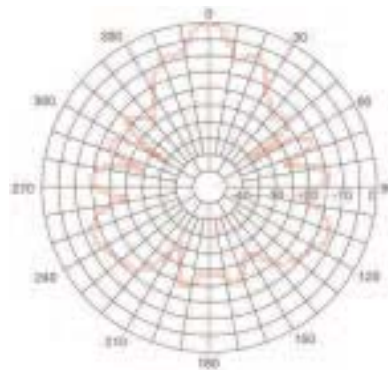
Frequency	2,300—2,600 GHz
Bandwidth @ 2:1 VSWR	<200MHz
Impedance	50 Ohms, nominal
Maximum power	100 Watts
Vertical beam width	75°
Horizontal beam width	65°
Front-to-back ratio	<22dB
Aperture	3" x 5.5" (front face)
Aperture panel size	3" x 3"
Material	Powder coated aluminum
Radome	ABS plastic
Weight	1 Lb.

Max Wind Velocity	100+ mph
Connector	Female "N"
Mounting	Round mast; surface and corner
Mounting Dimension	Up to 2" OD mast
Mounting hardware	Included Stainless Steel mounting hardware
Lightning	DC grounded; ext. protection recommended

## Parabolic Dish Antenna

CR-PAR2418

Specifications	Part # CR-PAR2418
Frequency	2.4 - 2.5 GHz
Gain	18 dBi
3dB Beam Width	12 Degrees
10dB Beam Width	33.7 Degrees
Nominal Impedance	50 Ohms
Maximum Power	50 Watts
Polarity	Dual
Cross Polarity Rejection	>23 dB
Front-To-Back Ratio	>20 dB
VSWR	1.4:1 @ 2.4 GHz - 2.5 GHz
Elevation Adjustment	0 - 60°
Wind Loading @ 75 Mph	25.0 Lb (@120Kph = 11.34 Kg)
Wind Loading @ 140 Mph	77.9 Lb (@225Kph = 35.33 Kg)
Material (Reflector)	Cast Magnesium Alloy
Material (Mtg. Hardware)	Stainless Steel
Weight	2.0 Lb (0.9 Kg)
Mounting	Pole/Mast & Surface
Interface Connector	"N" Male & 24" (60.9 cm) Coaxial Pigtail
Mounting Hardware Kit	Included
Dimensions	16" (0.406m) x 20" (0.51m) X 15" (0.38m)



**18T-2400-x**  
Gain = 17.73 dBi  
Frequency = 2.5 GHz  
10 dB BW = 33.7°  
3 dB BW = 12°

# Omni Directional Right Angle Antenna

CR-OMN2402

## CR-OMN2402

Specifications	Part # CR-OMN2402
Frequency Bandwidth	2.4 - 2.5 GHz
Antenna Type	Sleeve Dipole
Antenna Form Factor	0° - 90° Locking Swivel
Gain	2dBi
V. S. W. R.	<1.9:1
Nominal Impedance	50 Ohms
Radiation Pattern	Omni-Directional
Polarization	Vertical
Length	154.7mm (6.09 inches)
Pulling Strength	>3kgf
Swivel Torque	>3kgf
Connector	TNC Male
Temperature Range	-30°C ~ +60°C

