



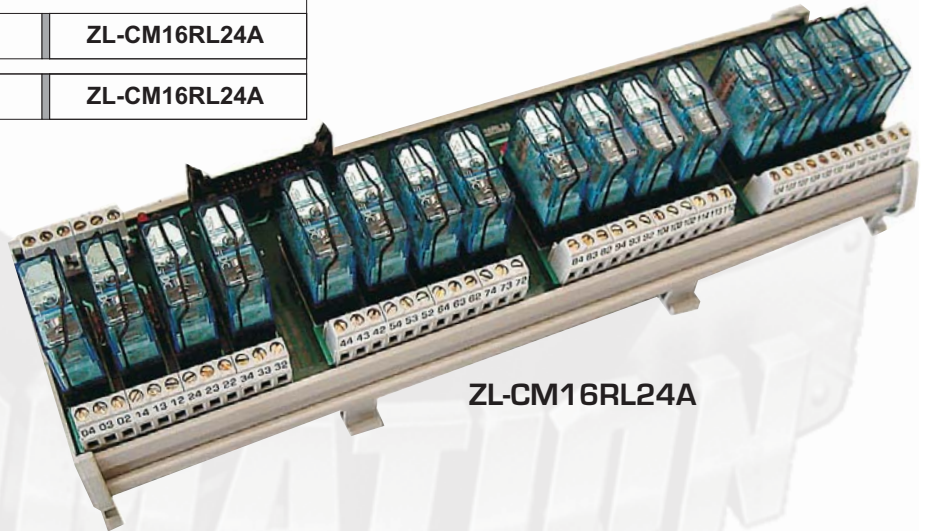
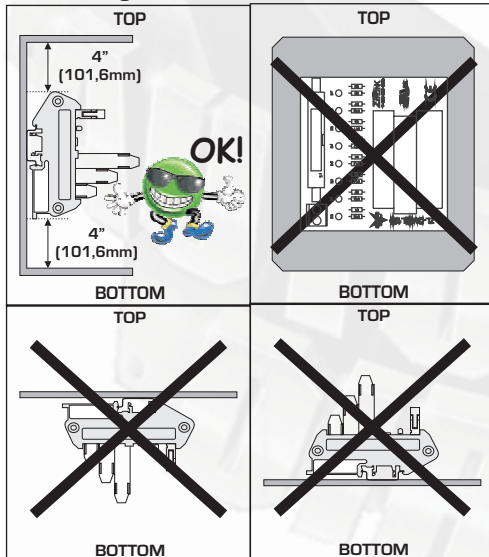
To download fullsize color .pdf Ziplink Wiring Diagrams go to www.Automationdirect.com website

ZIPLINK™
Automationdirect.com
800-633-0405

Relay Connector Module ZL-CM16RL24A Cables and PLC I/O Modules

PLC Type	Cable Type	PLC I/O Module Type	Connector Module Type
DL205	ZL-2CBL2	D2-16TD1-2	ZL-CM16RL24A
DL205	ZL-2CBL2	D2-16TD2-2	ZL-CM16RL24A
DL305	ZL-3CBL2FR16	D3-16TD1-1	ZL-CM16RL24A
DL305	ZL-3CBL2FR16	D3-16TD2	ZL-CM16RL24A

Mounting Orientation:



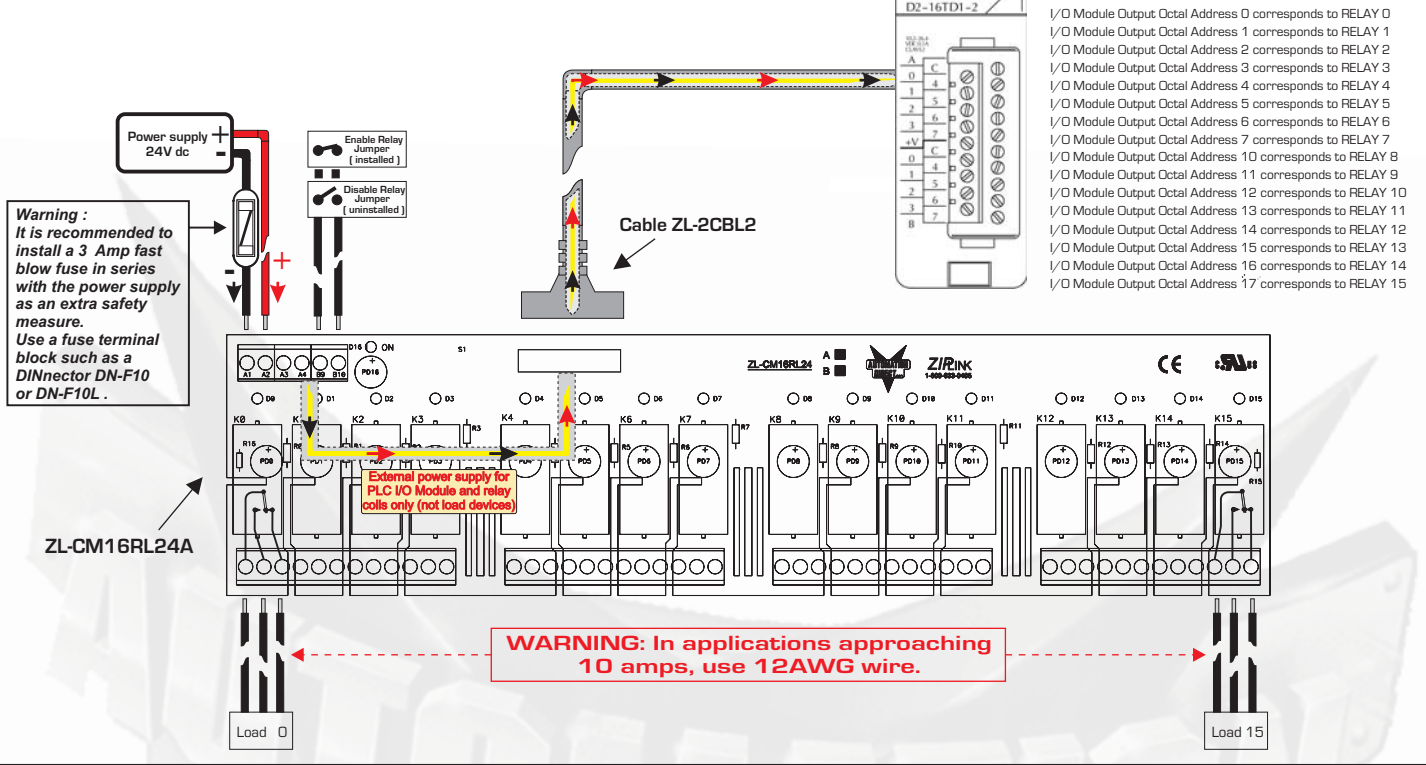
ZL-CM16RL24A

WARNING : WIRE ONLY ACCORDING TO WIRING DIAGRAMS SHOWN BELOW TO AVOID CAUSING DAMAGE TO THE PLC OR CONNECTOR MODULE. MATCH THE CORRECT COMBINATION OF CABLE, PLC I/O MODULE, AND CONNECTOR MODULE AS SHOWN.

DC-Powered Relay Modules	
Part Number	ZL-CM16RL24A
Description	16-channel relay module w/LEDs, 20 pin IDC
Approvals	UL/CUL/CE
Operating Range, Coil	0 - 24VDC
Input Current per Channel	25mA ±5%
Coil Supply Voltage	24VDC±5%
Coil Supply Current Max	350mA
Pickup Current	16.7mA
Switching Speed	60Hz
Contact Type	1 Form C (SPDT)
Contact Voltage (per point)	250VAC/30VDC
Contact Current (per point)	10A
Coil/Contact Isolation	2500VAC (up to 1min.)
Operating Temperature	-10°C to +45°C
OFF to ON/ON to OFF Response	15ms/5ms
Life Mechanical Contact	2x10 6th
Maximum Switching Voltage	400Vca 125Vcc
Maximum Current for Relay	10A
Maximum Power, Inductive	ca1500VA cc 150W
Maximum Power, Resistive	ca2500VA cc 300W
Minimum Load	100mA 5Vcc
Channel to Channel/Contact Isolation	1000VAC (up to 1 min.)
Terminal Block Contact	Copper alloy, tin-lead plating
Dimensions (L x W x H)	11.574"(294mm)x3.66"(93mm)x 2.87"(73mm)
Spare Relays	ZL-RELAY-24
Spare Relay Clips	ZL-RELAY-KIT

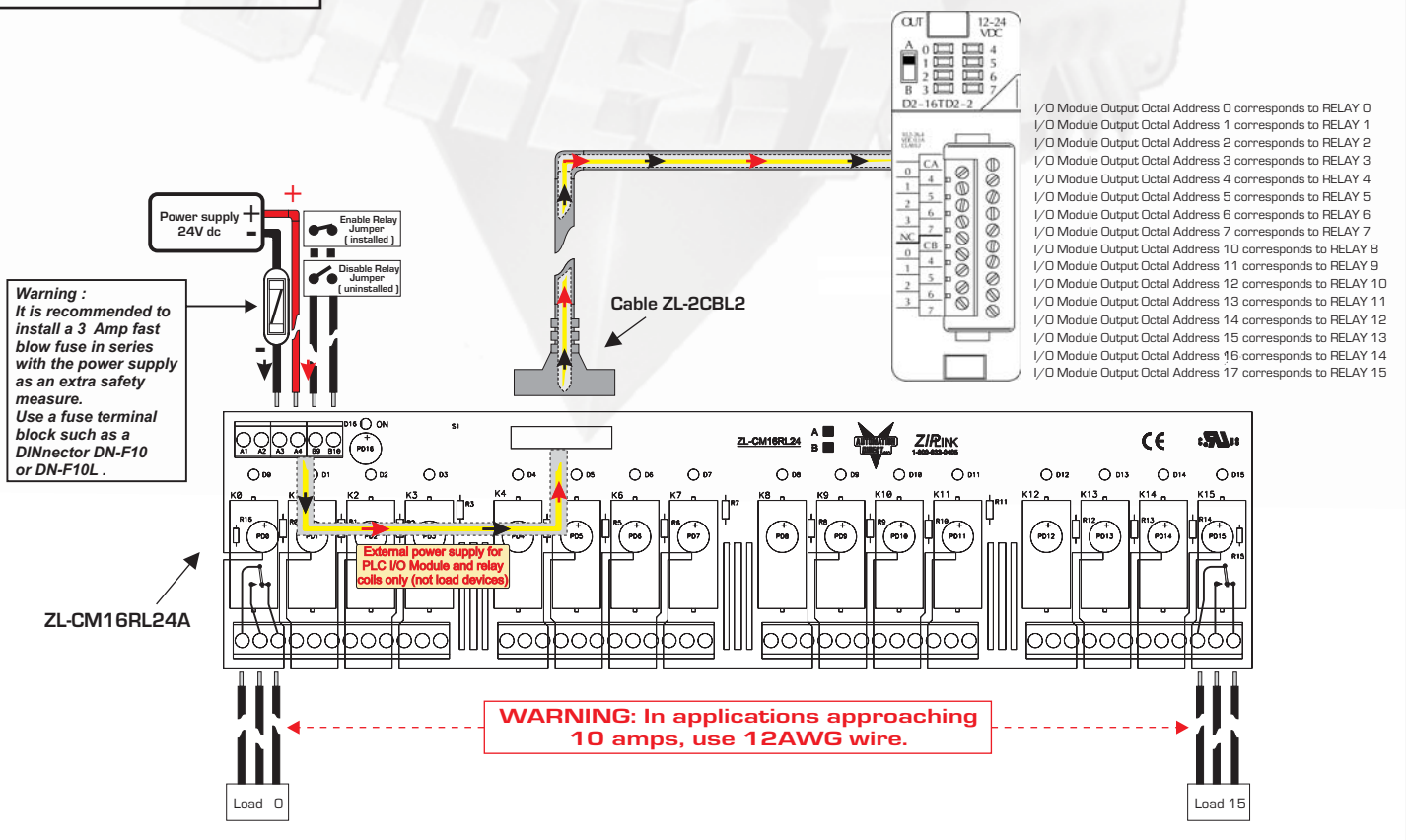
Wiring Diagram: Power Supply and Cable

PLC DL 205 Type D2-16TD1-2
DC Output I/O Module

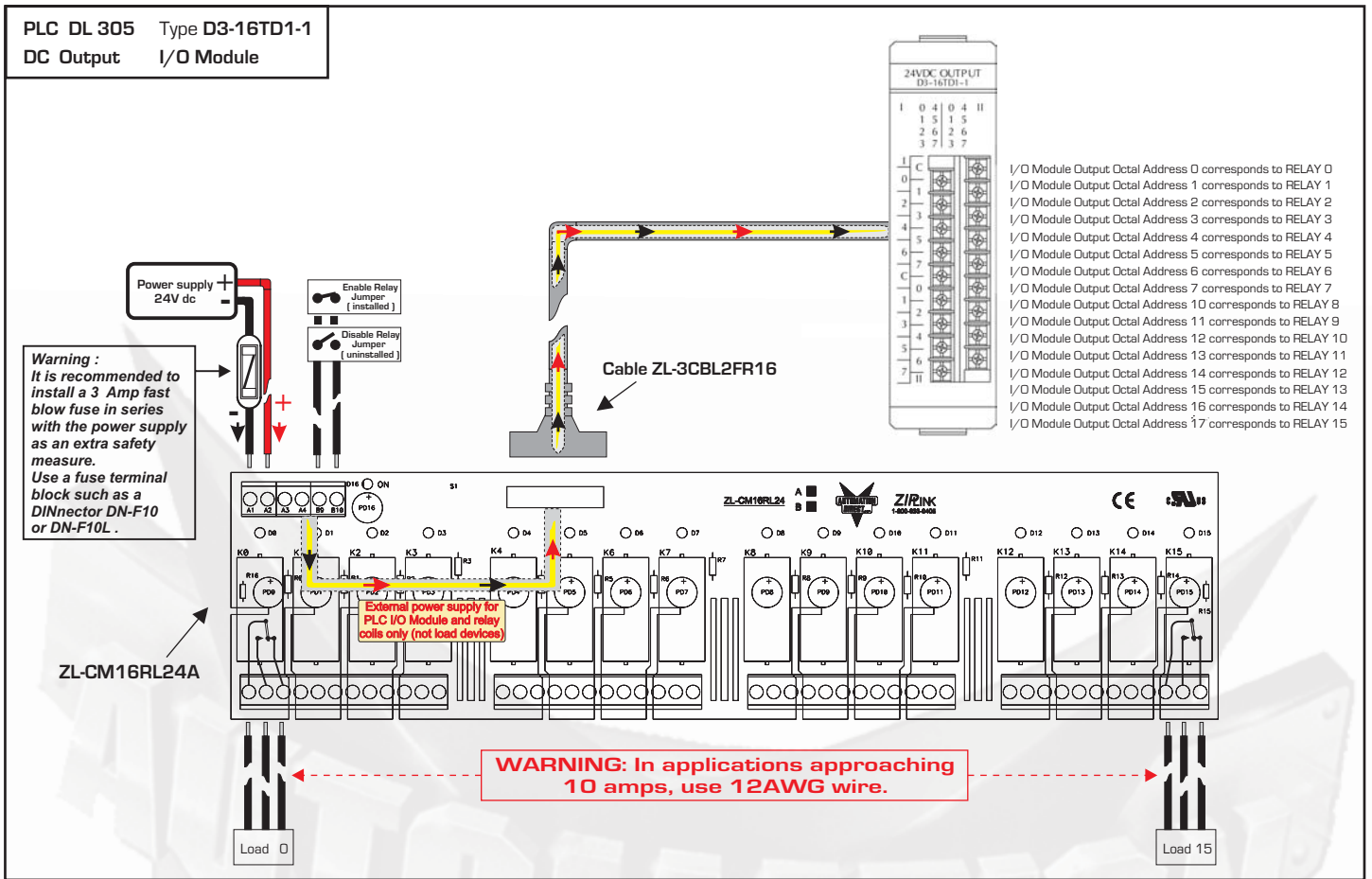


Wiring Diagram: Power Supply and Cable

PLC DL 205 Type D2-16TD2-2
DC Output I/O Module



Wiring Diagram: Power Supply and Cable



Wiring Diagram: Power Supply and Cable

