

# MANAGED SWITCH SOFTWARE ADVANCED OPERATIONS

---

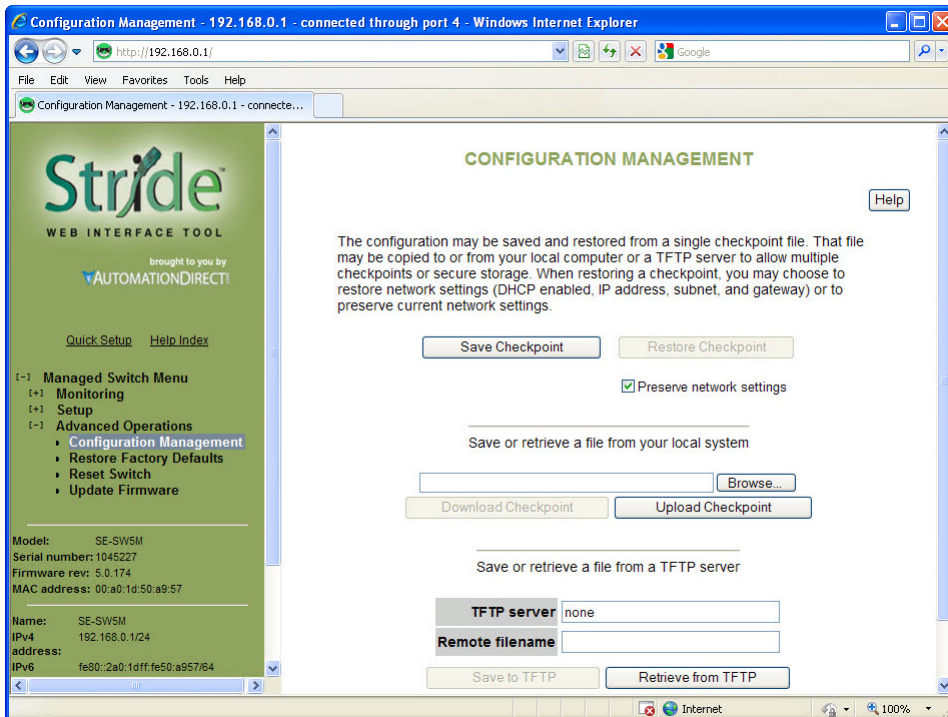


## In This Chapter...

Configuration Management.....	5-2
Restore Factory Defaults .....	5-4
Reset Switch .....	5-5
Update Firmware .....	5-6
Update Firmware using a TFTP Server: .....	5-6

## Configuration Management

One “checkpoint” (backup) version of the switch’s configuration can be stored in a local file on the switch. Unlimited backups can also be saved to your local system (web interface only) or to a TFTP server elsewhere on the network.



**Save Checkpoint:** Saves a checkpoint configuration in the switch, which may be used later to revert back to the current state if changes lead to an undesirable configuration.

**Restore Checkpoint:** Reverts to the settings in the saved checkpoint. You can choose to keep your current network settings or use the ones in the checkpoint file.



**NOTE:** The current administrator's password will remain in effect after the restoration. SNMP passwords will be restored to the values in the checkpoint.

**Download Checkpoint:** Saves a zipped file of the current configuration file external to the switch

**Upload Checkpoint:** Unzips the selected file and stores a copy on the switch. It must be restored via Restore Checkpoint to be written as the switch configuration.

**TFTP Configuration:** Specifies the name or IP address of the TFTP (Trivial File Transfer Protocol) server where configuration checkpoints may be stored.

**Save to TFTP:** Saves the current configuration checkpoint file to the defined TFTP server. You must specify the name of a file on the server.

**Retrieve from TFTP:** Retrieves a previously saved configuration checkpoint file from the defined TFTP server. After retrieval, the configuration still must be restored to be made active.



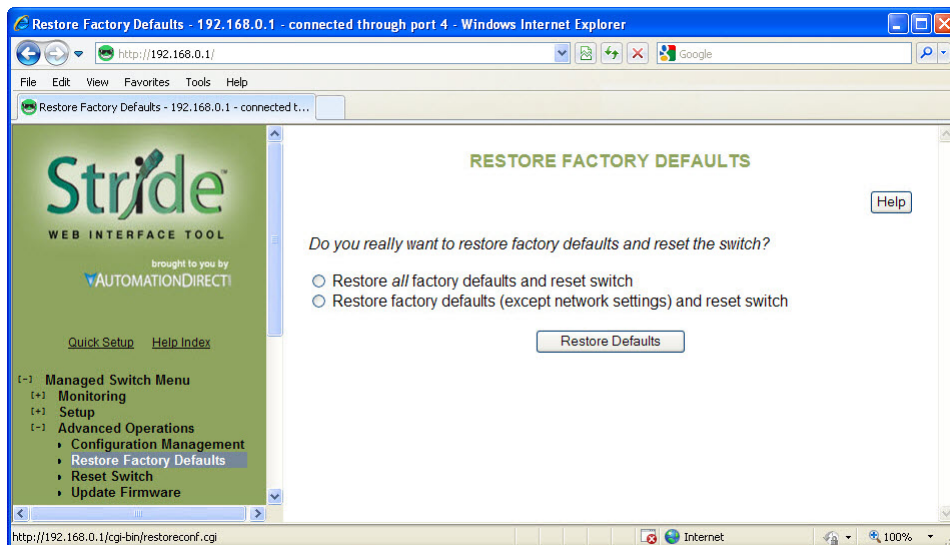
---

**NOTE:** The web interface also allows you to download (save) and upload (retrieve) files directly from your local system. No TFTP server is needed.

---

## Restore Factory Defaults

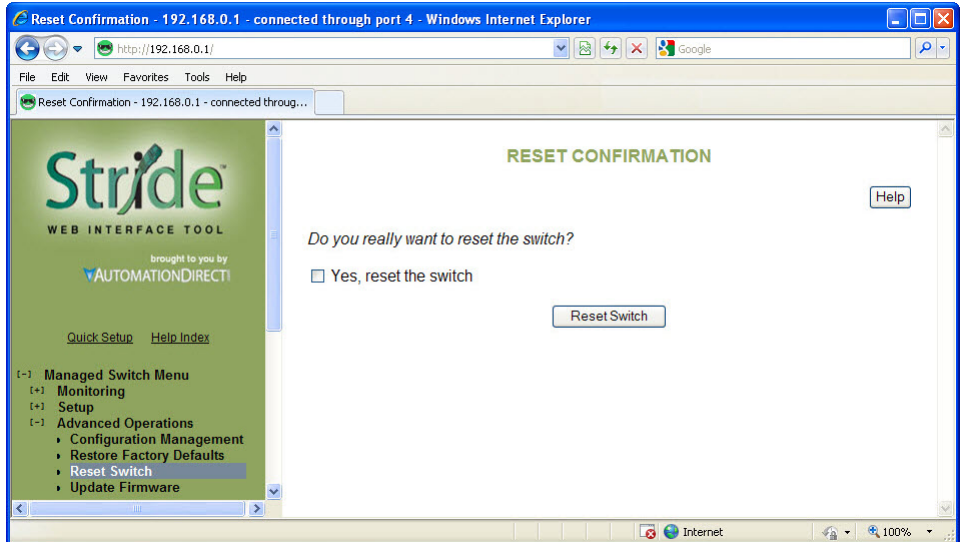
This option sets the switch back to factory default settings. The switch will automatically restart (reset) to put the default settings into effect.



You can optionally choose to maintain the IP address configuration of the switch in order to more easily reconnect to the switch for configuration after resetting the defaults.

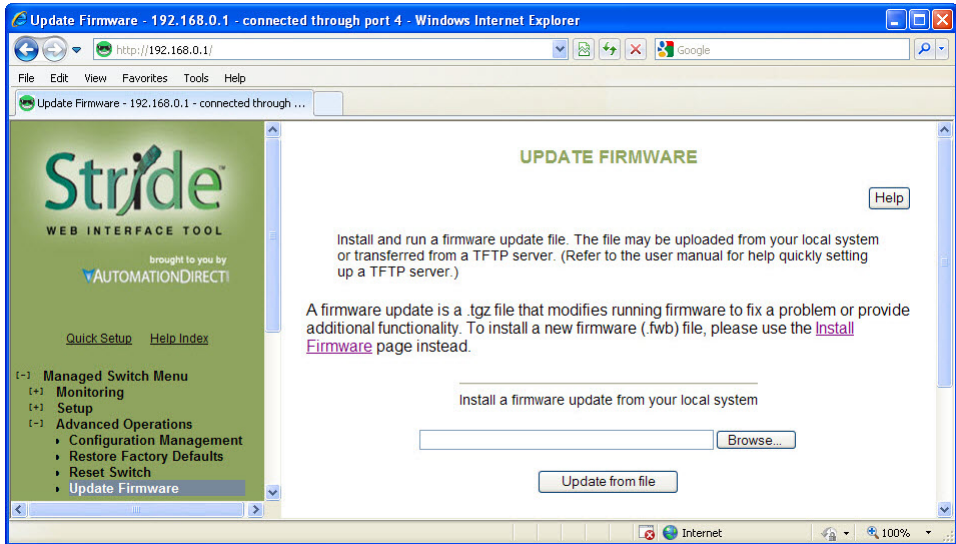
## Reset Switch

This feature will cause the switch to perform a “soft” restart (software reset). A software reset may take 30 seconds or more depending on what features are enabled in the switch.



## Update Firmware

Use Manage Firware to install a complete firmware file with a \*.tgz filename. The Update Firware page is used for incremental changes to firmware versions applied by a file with a \*.fwb filename. Firmware updates are released periodically to add features and fix problems. The recommended and easiest way to update firmware is from the web interface. It allows you to Browse and select the firmware update package from your local computer or a computer on your local network. Then just click the Update from File button to load and install the latest firmware files.



This method of updating the firmware will retain all your settings. However, it is still recommended that you save a “checkpoint” configuration as a backup.

### Update Firmware using a TFTP Server:

Another option for updating firmware is via a TFTP server elsewhere on the network. Simply specify the IP address of the remote TFTP server and the filename of the update. If necessary, the switch will automatically reboot after installing the new firmware files. After the reboot you may see an “Internal Server Error” message. Simply click refresh on your browser to reestablish communications with the switch.

This method of updating the firmware will retain all your settings. However, it is still recommended that you save a “checkpoint” configuration as a backup.