

## Mounting recommendations

### Mounting

Mounting is possible in any position. For devices with threaded M18 housing, the use of the 2 supplied nuts is recommended. The maximum tightening torque of 20 Nm must not be exceeded.

### Environment

Any deposit on the windows reduces the operating distance. The mounting position should be chosen, whenever possible, in order to prevent dust deposits (not facing upwards) and so that liquids cannot reach the windows. Furthermore, accessibility for cleaning should be provided.

### Cable

The standard cable (PVC) is not suitable for use in environments containing oil or solvents, nor for repeated bending. In these cases, versions with highly flexible PUR cables are recommended.

### Alignment

First, place the receiver in the desired position and fix it. Then, position the emitter on the optical axis of the receiver, align its optical axis with the receiver, and fasten it. Last, check for reliable switching (see under "Distance setting").

### Distance setting (receiver)

The operating distance can be set by means of the built-in potentiometer. Initial setting is at its maximum and should only be reduced if necessary (turn the screw counter-clockwise). For reliable operation, the green LED (excess-gain indication) must light up. The yellow LED indicates the output state.

### Cleaning

For cleaning, a soft cloth moistened with isopropanol or soapy water is recommended.

## Important notice

**These proximity switches must not be used in applications where the safety of people is dependent on their functioning.**

For further information, please refer to the detailed data sheet of this device and to the catalog "Inductive, Photoelectric and Ultrasonic Proximity Switches".

This product is protected by one or several of the following US patents: 5 182 612, 5 767 444, 5 675 143, 5 764 351, 6 031 430, 6 130 489, 6 133 654, 6 133 988. Further patents pending.

CORADC11



Through-beam sensor

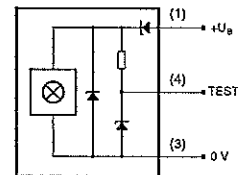
Transmitter

Part number

Operating distance

20 000 mm

## Wiring



pin assignment (view onto device):

U<sub>0</sub> 10 ... 36 VDC

Window glass

COVADC112

CE

## Mounting recommendations

### Mounting

Mounting is possible in any position. For devices with threaded M18 housing, the use of the 2 supplied nuts is recommended. The maximum tightening torque of 20 Nm must not be exceeded.

### Environment

Any deposit on the windows reduces the operating distance. The mounting position should be chosen, whenever possible, in order to prevent dust deposits (not facing upwards) and so that liquids cannot reach the windows. Furthermore, accessibility for cleaning should be provided.

### Cable

The standard cable (PVC) is not suitable for use in environments containing oil or solvents, nor for repeated bending. In these cases, versions with highly flexible PUR cables are recommended.

### Alignment

First, place the receiver in the desired position and fix it. Then, position the emitter on the optical axis of the receiver, align its optical axis with the receiver, and fasten it. Last, check for reliable switching (see under "Distance setting").

### Distance setting (receiver)

The operating distance can be set by means of the built-in potentiometer. Initial setting is at its maximum and should only be reduced if necessary (turn the screw counter-clockwise). For reliable operation, the green LED (excess-gain indication) must light up. The yellow LED indicates the output state.

### Cleaning

For cleaning, a soft cloth moistened with isopropanol or soapy water is recommended.

## Important notice

**These proximity switches must not be used in applications where the safety of people is dependent on their functioning.**

For further information, please refer to the detailed data sheet of this device and to the catalog "Inductive, Photoelectric and Ultrasonic Proximity Switches".

This product is protected by one or several of the following US patents: 5 182 612, 5 767 444, 5 675 143, 5 764 351, 6 031 430, 6 130 489, 6 133 654, 6 133 988. Further patents pending.

CORADC11



Through-beam sensor

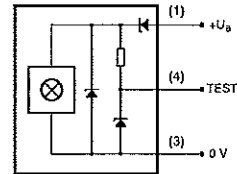
Transmitter

Part number

Operating distance

20 000 mm

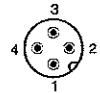
## Wiring



U<sub>a</sub> 10 ... 36 VDC

Window glass

pin assignment (view onto device):



COVADC112

