



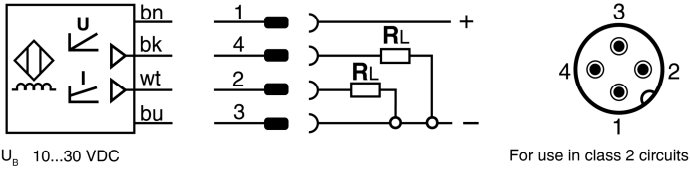
Metal sensing proximity switch

Analog Quasi-embeddable

Part number **AM9-05-1H**

For use in NFPA 79 Applications only

Housing **M12** Operating distance S_n **0...6 mm**



Adapters providing field wiring means are available from the manufacturer. Refer to manufacturers information.



320-014-101

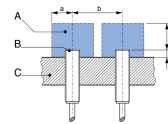
Operators of the products we supply are responsible for compliance with measures for the protection of persons. The use of our equipment in applications where the safety of persons might be at risk is only authorized if the operator observes and implements separate, appropriate and necessary measures for the protection of persons and machines.

Mounting recommendations

Free zone

Providing the following free zones is mandatory for reliable operation.

- A metal-free zone
- B sensing face
- C support



\emptyset	a [mm]	b [mm]	c [mm]	d [mm]	Mn [Nm]
M12	12	30	18	2	10

6Nm for the first 10mm

Operating distance

The effective usable operating distance is

$0.81 s_n < s_f < 1.21 s_n$
 measured with the square standard target with
 $l = \emptyset_s$ or $l = 3 \times s_n$.

Tightening torque

The specified maximum tightening torque M_N must not be exceeded.

Sensing face

The sensing face must not be mechanically damaged.

Safety

These proximity switches must not be used in applications where the safety of people is dependent on their functioning.