

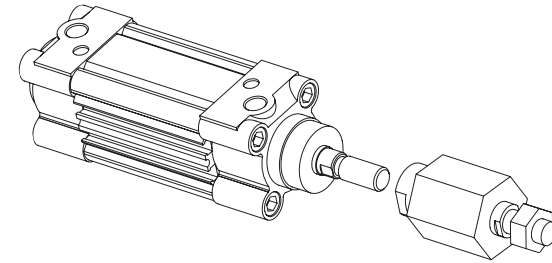


ISO 15552 Pneumatic Cylinders - G-Series Mounting Options

Self Aligning Rod Coupler

For Self Aligning Rod Cylinder assembly, use the Self Aligning Rod Coupler Kit. Use the chart below to select the correct Self Aligning Rod Coupler for your G-Series cylinder. Use the drawing below for installation reference.

Part Number	Description	Bore Size
GRCP-M10-125	Zinc Plated Steel Self-Aligning Rod Coupler	32mm
GRCP-M12-125	Zinc Plated Steel Self-Aligning Rod Coupler	40mm
GRCP-M16-15	Zinc Plated Steel Self-Aligning Rod Coupler	50mm/63mm
GRCP-M20-15	Zinc Plated Steel Self-Aligning Rod Coupler	80mm/100mm

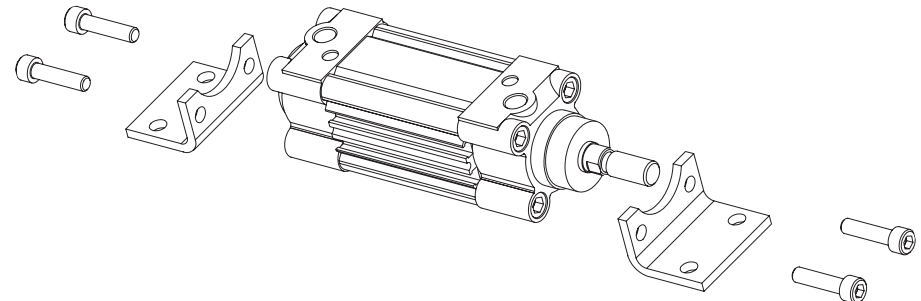


Foot Mount Bracket

For Foot Mount assembly, use the Foot Mount Kit. Use the chart below to select the correct Foot Mount for your G-Series cylinder. Use the drawing below for installation reference.

Part Number	Description	Bore Size	Bolt Size	Torque
GMB-32MM	Zinc Plated Steel Foot Mount Bracket	32mm	M6-1.0 x 18mm	89 in-lbs
GMB-40MM	Zinc Plated Steel Foot Mount Bracket	40mm	M6-1.0 x 18mm	89 in-lbs
GMB-50MM	Zinc Plated Steel Foot Mount Bracket	50mm	M8-1.25 x 20mm	222 in-lbs
GMB-63MM	Zinc Plated Steel Foot Mount Bracket	63mm	M8-1.25 x 20mm	222 in-lbs
GMB-80MM	Zinc Plated Steel Foot Mount Bracket	80mm	M10-1.25 x 25mm	310 in-lbs
GMB-100MM	Zinc Plated Steel Foot Mount Bracket	100mm	M10-1.25 x 25mm	310 in-lbs

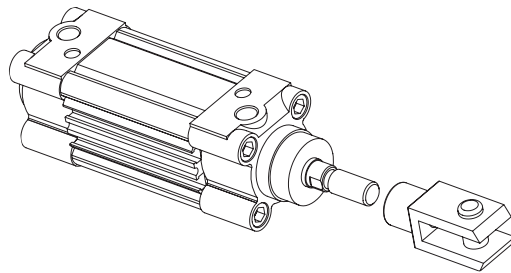
Note: Each bracket sold separately



Rod Clevis

For Rod Clevis assembly, use the Rod Clevis Kit. Use the chart below to select the correct Rod Clevis for your G-Series cylinder. Use the drawing below for installation reference.

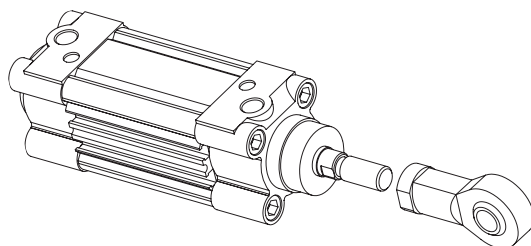
Part Number	Description	Bore Size
GRC-M10-125	Zinc Plated Steel Rod Clevis	32mm
GRC-M12-125	Zinc Plated Steel Rod Clevis	40mm
GRC-M16-15	Zinc Plated Steel Rod Clevis	50mm/63mm
GRC-M20-15	Zinc Plated Steel Rod Clevis	80mm/100mm



Rod Eye

For Rod Eye assembly, use the Rod Eye Kit. Use the chart below to select the correct Rod Eye for your G-Series cylinder. Use the drawing below for installation reference.

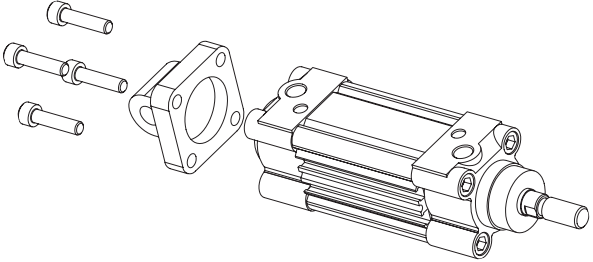
Part Number	Description	Bore Size
GRE-M10-125	Zinc Plated Steel Rod Eye	32mm
GRE-M12-125	Zinc Plated Steel Rod Eye	40mm
GRE-M16-15	Zinc Plated Steel Rod Eye	50mm/63mm
GRE-M20-15	Zinc Plated Steel Rod Eye	80mm/100mm



Rear Pivot Eye

For Rear Pivot Eye mounting, use the Rear Pivot Eye Mount Kit. Use the chart below to select the correct Rear Clevis mount for your G-Series cylinder. Use the drawing below for installation reference.

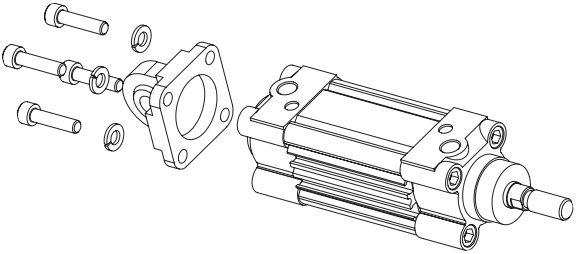
Part Number	Description	Bore Size	Bolt Size	Torque
GMC-32MM	Zinc Plated Steel Rear Pivot Eye	32mm	M6-1.0 x 20mm	89 in-lbs
GMC-40MM	Zinc Plated Steel Rear Pivot Eye	40mm	M6-1.0 x 20mm	89 in-lbs
GMC-50MM	Zinc Plated Steel Rear Pivot Eye	50mm	M8-1.25 x 20mm	222 in-lbs
GMC-63MM	Zinc Plated Steel Rear Pivot Eye	63mm	M8-1.25 x 20mm	222 in-lbs
GMC-80MM	Zinc Plated Steel Rear Pivot Eye	80mm	M10-1.25 x 30mm	310 in-lbs
GMC-100MM	Zinc Plated Steel Rear Pivot Eye	100mm	M10-1.25 x 30mm	310 in-lbs



Spherical Rear Pivot

For Spherical Rear Pivot mounting, use the Spherical Rear Pivot Mount Kit. Use the chart below to select the correct Spherical Rear Pivot mount for your G-Series cylinder. Use the drawing below for installation reference.

Part Number	Description	Bore Size	Bolt Size	Torque
GSMC-32MM	Zinc Plated Steel Rear Spherical Pivot	32mm	M6-1.0 x 20mm	89 in-lbs
GSMC-40MM	Zinc Plated Steel Rear Spherical Pivot	40mm	M6-1.0 x 20mm	89 in-lbs
GSMC-50MM	Zinc Plated Steel Rear Spherical Pivot	50mm	M8-1.25 x 30mm	222 in-lbs
GSMC-63MM	Zinc Plated Steel Rear Spherical Pivot	63mm	M8-1.25 x 25mm	222 in-lbs
GSMC-80MM	Zinc Plated Steel Rear Spherical Pivot	80mm	M10-1.25 x 35mm	310 in-lbs
GSMC-100MM	Zinc Plated Steel Rear Spherical Pivot	100mm	M10-1.25 x 30mm	310 in-lbs

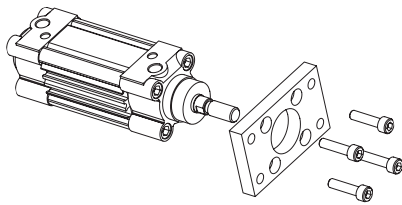


Front or Rear Flange Mount

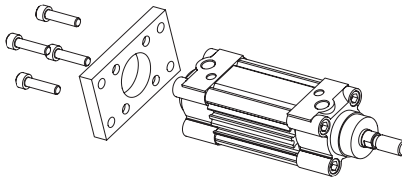
For Front or Rear Flange mounting, use the Flange Mount Kit. Use the chart below to select the correct Flange mount for your G-Series cylinder. Use the drawings below for installation reference.

Part Number	Description	Bore Size	Bolt Size	Torque
GFL-32MM	Zinc Plated Steel Flange Mount Plate	32mm	M6-1.0 x 18mm	89 in-lbs
GFL-40MM	Zinc Plated Steel Flange Mount Plate	40mm	M6-1.0 x 18mm	89 in-lbs
GFL-50MM	Zinc Plated Steel Flange Mount Plate	50mm	M8-1.25 x 20mm	222 in-lbs
GFL-63MM	Zinc Plated Steel Flange Mount Plate	63mm	M8-1.25 x 20mm	222 in-lbs
GFL-80MM	Zinc Plated Steel Flange Mount Plate	80mm	M10-1.25 x 25mm	310 in-lbs
GFL-100MM	Zinc Plated Steel Flange Mount Plate	100mm	M10-1.25 x 25mm	310 in-lbs

Front Flange Mount



Rear Flange Mount



Rod Nut

For Rod Nut mounting, use the Rod Nut Kit. Use the chart below to select the correct Rod Nut for your G-Series cylinder. Use the drawing below for installation reference.

Part Number	Description	Bore Size
GN-M10-125	Zinc Plated Steel Rod Nut	32mm
GN-M12-125	Zinc Plated Steel Rod Nut	40mm
GN-M16-15	Zinc Plated Steel Rod Nut	50mm/63mm
GN-M20-15	Zinc Plated Steel Rod Nut	80mm/100mm

