

# USING THE ESP UTILITY TO SET UP THE WINPLC WHEN WHEN USING THINK & DO VER. 5.2 OR 5.3

---



## In This Appendix...

- Using the Think & Do ESP Utility to Set Up the WinPLC . . . . .A-2



---

*Note: This Appendix only applies if you are using the WinPLC with Think & Do versions 5.2 or 5.3. Use Chapter 2 if using the WinPLC with Think & Do Studio version 6.0 or later.*

---

**NOTE:** Think & Do software (PC-TD8-USB & PC-TD8-WEB4-USB) has been retired and is no longer supported. Please consider Do-more software for your project.

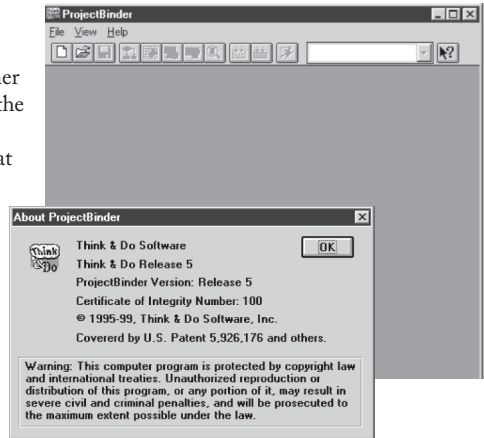
## Using the Think & Do ESP Utility to Set Up the WinPLC

### Check Think & Do Version First

You will need Version 5.2 (or later) of Think & Do, to recognize the H2-SERIO module. To determine whether you have the right version, open the Project Binder. As the Project Binder opens, you may notice a screen that tells you which Version of Think & Do you are opening. That screen disappears as the Project Binder opens.

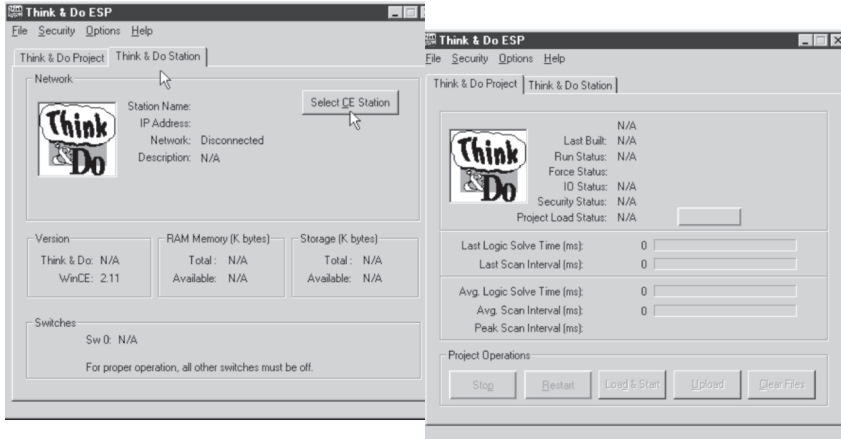
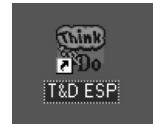
After the Project Binder is open, you can click on “Help,” and the bottom menu option, “About Project Binder,” will tell you which Version you are using.

After you load Think & Do, Version 5.2 or 5.3, you will notice a Think & Do ESP icon on your desktop.



If you double click this icon, you will start a utility that helps you establish network parameters for the WinPLC.

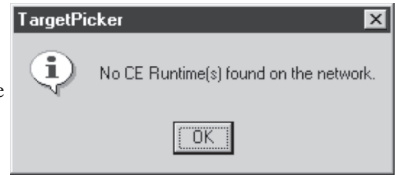
Click on the “Think & Do Station” tab, then click on the “Select CE Station” button to open the “TargetPicker”.



## TargetPicker

A “TargetPicker” message box opens to notify you that no CE targets are currently visible on the network.

Acknowledge this message by clicking OK, and the “Think & Do ESP CE Station Selection” window will open. If you have not already done so, install the WinPLC and connect power to the DL205 base. See pages 1-4 through- 1-7 for important wiring and installation information.

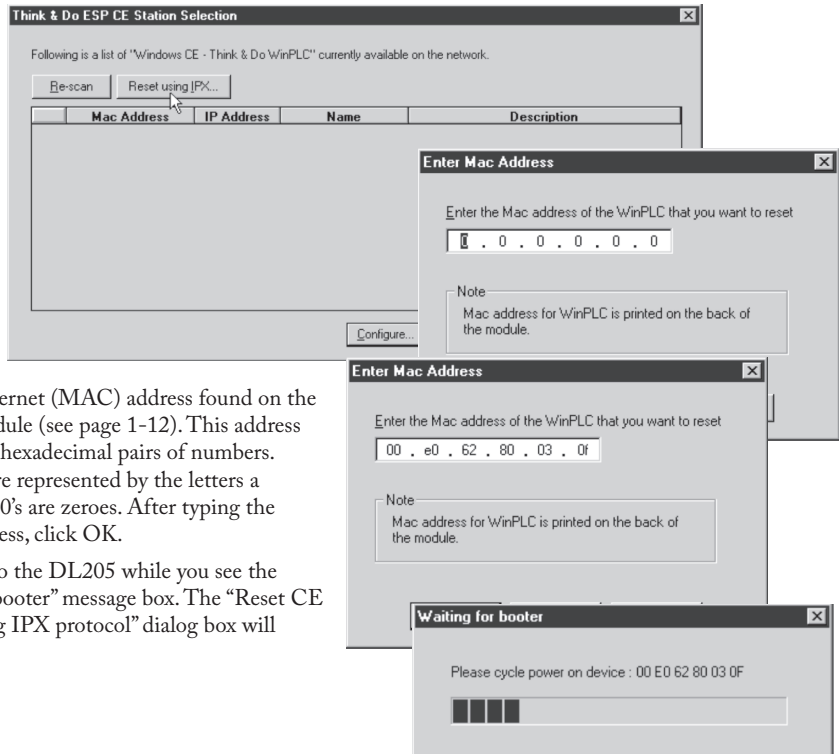


*NOTE: The following link procedure assumes that you are directly connected from your Think & Do Development System computer to your WinPLC. For more information about making this connection, consult the Think & Do Software Learning Guide. If your WinPLC is connected via your office or plant network, please consult your Network Administrator for appropriate network settings.*



Click the “Reset using IPX” button on the Station Selection window. This will allow Think & Do to link to the WinPLC target using its Ethernet address (MAC address). The IPX protocol must be loaded on your Think & Do Development System Computer. For more information, consult the Think & Do Software Learning Guide.

## Ethernet or MAC Address



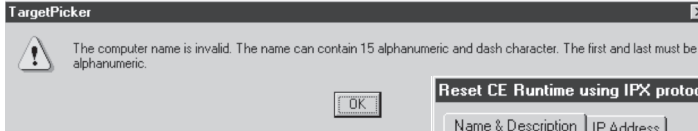
Enter the Ethernet (MAC) address found on the WinPLC module (see page 1-12). This address consists of six hexadecimal pairs of numbers. Some digits are represented by the letters a through f. All 0's are zeroes. After typing the Ethernet address, click OK.

Cycle power to the DL205 while you see the “Waiting for booter” message box. The “Reset CE Runtime using IPX protocol” dialog box will appear next.

## WinPLC Name is Required

The “Reset CE Runtime using IPX protocol” window requires you to name the WinPLC module. You can use up to 15 alphanumeric characters.

If the name you select does not conform to the length or character usage requirements, you will see the TargetPicker error message shown below

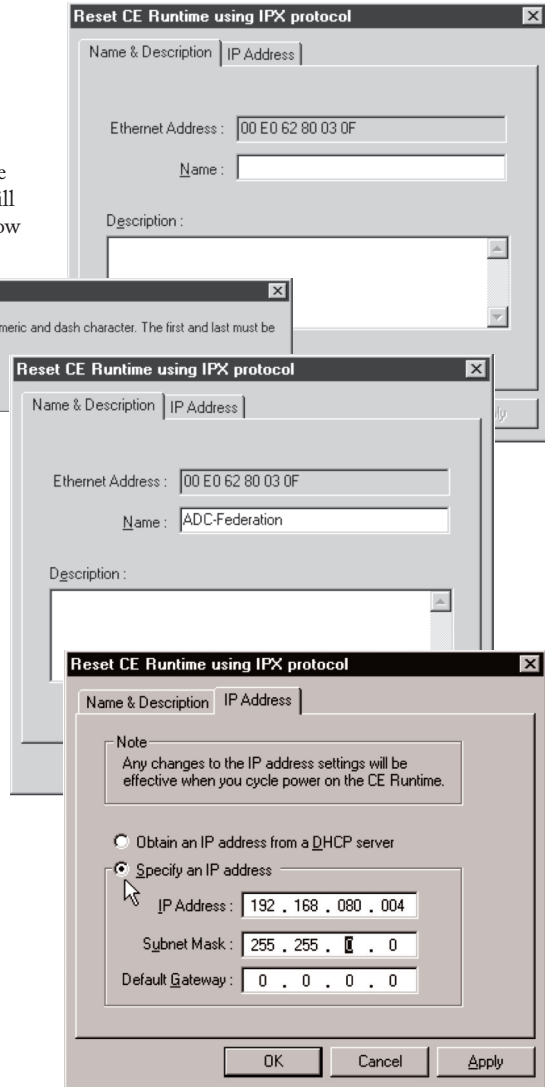


You can also assign an optional description to the WinPLC in the field provided.

## IP Address is Required

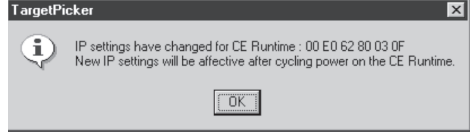
Now, click on the “IP Address” tab. Assign an IP Address and Subnet Mask that are compatible with the IP Address and Subnet Mask of your Think & Do Development System computer.

When you have completed the IP Address and Subnet Mask (and default Gateway, if necessary), click OK.



## Cycle Power After Assigning IP Address

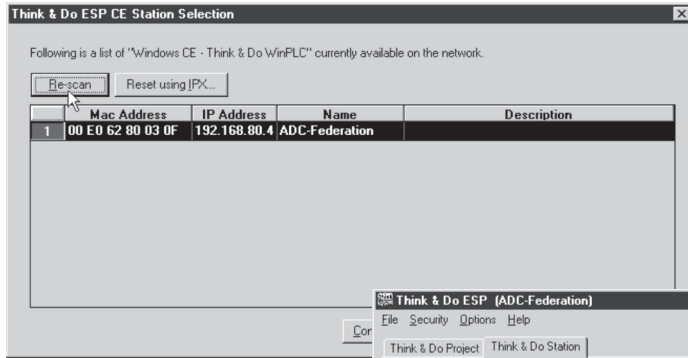
A TargetPicker message box will pop up to let you know you must cycle power to make the new IP address effective.



After you click OK and cycle power to the DL205, the "Think & Do ESP CE Station Selection" window will reappear (as shown below). Click on the button labeled Re-scan, and you should see the WinPLC module listed by its MAC address, IP address, Name, and Description.

If you do not see your WinPLC module listed, check to be sure the power is on to the DL205. If the power is on, recheck your IP addresses on the WinPLC and your Think & Do Development System computer for compatibility. Also, make sure you have loaded the IP protocol on your Development System computer and that you are using the appropriate connecting cable (straight-through or crossover).

## Select, Exit, You're Connected



If your module is listed on the window above but not highlighted, click on the module information and click the button labeled Select. Then, click Exit.

You will return to the initial Think & Do ESP window which will now show your Think & Do and Windows CE Version numbers as well as memory usage information. At this point, you are successfully linked to the WinPLC. You can continue to develop your project or download it to the WinPLC using the methods described in the Think & Do Software Learning Guide.



## Notes