

MAPPING ERM SLAVE I/O IN A THINK & Do WINPLC SYSTEM



In This Appendix...

Mapping ERM Slave I/O PointsD-2
Launching Connectivity Center ToolD-2
Connecting to the WinPLC Base I/OD-2
Connecting to the ERM Slave I/OD-3
Mapping I/O Points to Data ItemsD-3

Mapping ERM Slave I/O Points

The purpose of this appendix is to identify that the Think & Do ConnectivityCenter tool is used to configure (map) the ERM remote slave I/O points to Data Items. We recommend that you are familiar with the “Getting Started” and “Creating a Project” chapters in the Think & Do Studio Learning Guide before attempting to configure the ERM I/O in ConnectivityCenter.



NOTE: The ERM and its slaves need to be configured using ERM Workbench before using Think & Do ConnectivityCenter to map the ERM slave I/O points to Data Items.

D

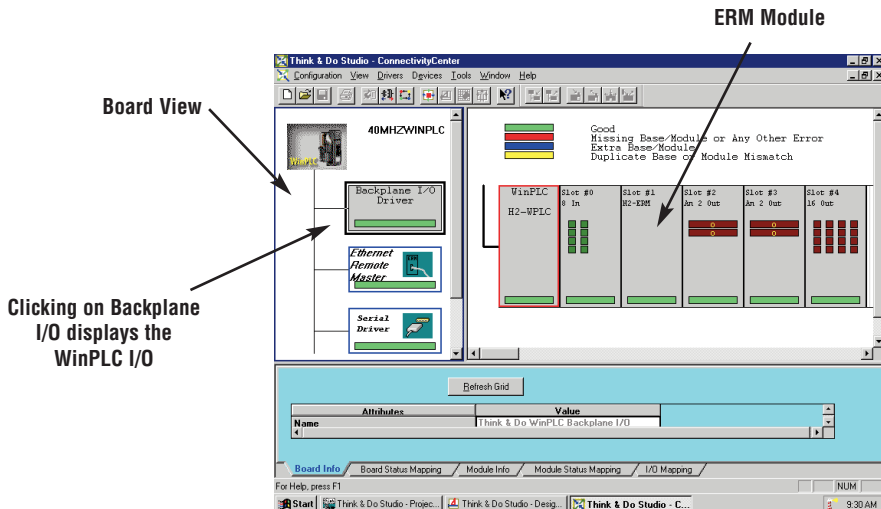
Launching Connectivity Center Tool

To launch Connectivity Center:

- 1) Launch Think & Do Studio ProjectCenter from the Windows desktop by clicking on Start > Programs > Think & Do Studio > ProjectCenter. Or, click on the ProjectCenter icon to start.
- 2) Click on the File Menu and either Open your Think & Do Project or select New.
- 3) Within ProjectCenter select Windows CE – Think & Do WinPLC as the Runtime Target.
- 4) Then click Tools > ConnectivityCenter to launch ConnectivityCenter. Or, click on the ConnectivityCenter shortcut in the Project Explorer.
- 5) Once in ConnectivityCenter click on Configuration > Connect or click on the Connect toolbar button.

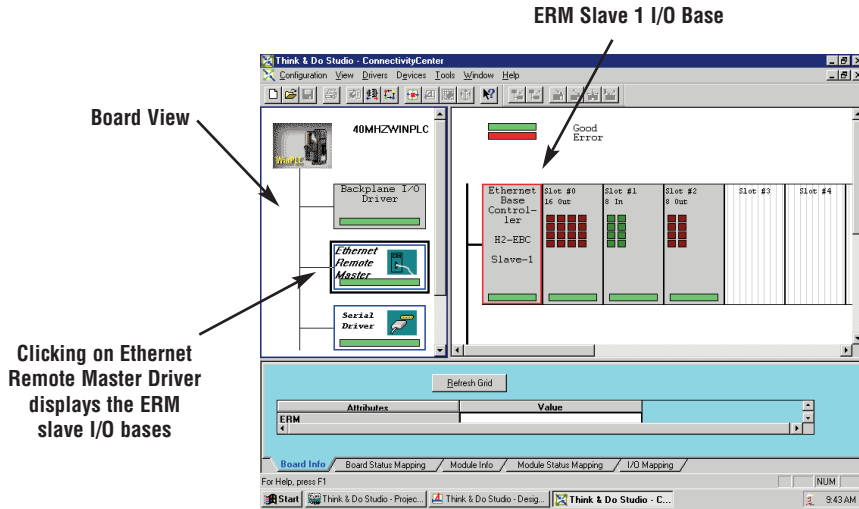
Connecting to the WinPLC Base I/O

ConnectivityCenter will draw a picture of your WinPLC / ERM I/O network. Clicking on the Backplane I/O Driver in the Board view window will display the WinPLC I/O base.

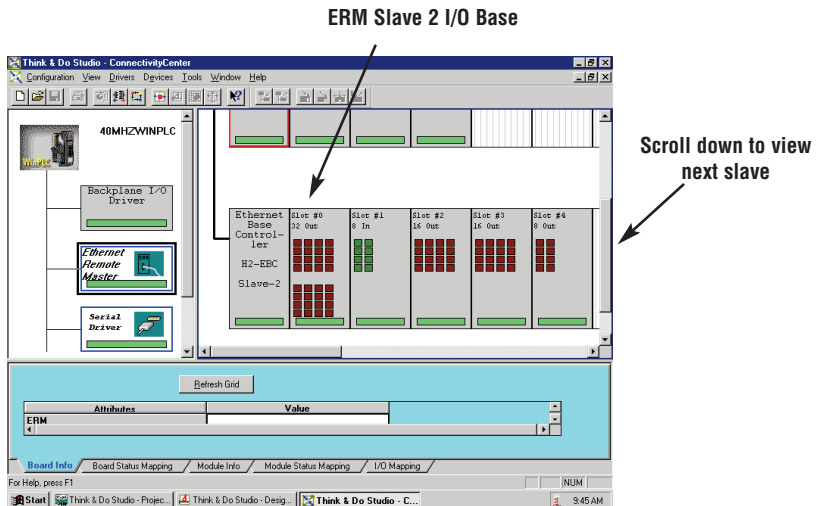


Connecting to the ERM Slave I/O

Clicking on the Ethernet Remote Master Driver in the Board view window will display the ERM slave I/O base(s).



D



Mapping I/O Points to Data Items

This procedure is discussed in detail in the “Creating a Project” chapter in the Think & Do Studio Learning Guide. This will map your real world I/O to Data Items.

Notes:

D