

EMI/EMC FILTER

RIP/RIQ SERIES



FEATURES

- A fuse holder and a double pole power ON/OFF switch.
- Suitable for the products that must conform to FCC, FTZ.
- Good shield effect by using metal case.
- Meet over voltage category II of IEC 60664 and comply with IEC 60950.
- Uses IEC connector that meets the safety standards all certifying organization.
- Snap in type for quick mounting.

APPLICATIONS

- Digital equipments.
- Measuring and testing instruments.
- Communication equipments.

SPECIFICATIONS

| Model | Rated Voltage (AC,DC) | Rated Current | Leakage Current (250V AC) | Temperature Rise | Operating Temperature |
|-----------------|-----------------------|---------------|---------------------------|------------------|--|
| RIP/RIQ-02**H* | 250V | 2A | - | 40°C max. | -25°C to + 85°C Including temperature rise |
| RIP/RIQ-04**H* | 250V | 4A | - | 45°C max. | |
| RIP/RIQ-06**H* | 250V | 6A | - | 45°C max. | |
| RIP/RIQ-***0-H* | - | * | 0.01mA max. | - | |
| RIP/RIQ-***C-H* | - | * | 0.075mA max. | - | |
| RIP/RIQ-***D-H* | - | * | 0.10mA max. | - | |
| RIP/RIQ-***2-H* | - | * | 0.35mA max. | - | |
| RIP/RIQ-***3-H* | - | * | 0.50mA max. | - | |

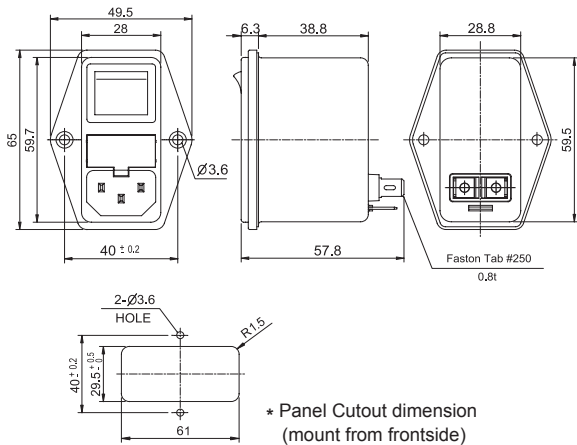
Note : Test Voltage : 1500V AC one minute line to earth.
 Insulation Resistance : 300 Mohm min, at 500V DC.
 Voltage Drop : 1V max. at rated current.
 Weight : 130g
 Inlet : Compatible with IEC-60320

Model Number Construction

| RI | P | 02 | 4 | 2 | H | 0 |
|--------------------------------------|---|---|---|--|---|---|
| Input Connector I : IEC Connector | Special Design P : Screw Mounting/ With Double Pole Switch and Fuse Holder Q : Snap-in With Lock spring/With Double Pole Switch and Fuse Holder | Current Rating : ACrms 02 : 2amp 04 : 4amp 06 : 6amp | Line-Line Cap.Value (Input side) 1 : 0.1 μ F 2 : 0.22 μ F 4 : 0.47 μ F | Line-Gnd Cap.Value 2 : 2200 pF 3 : 3300 pF C : 330 pF D : 470 pF 0 : None | Output Terminal style H : Faston Tab #250 | Line-Line Cap.Value (Output side) 0 : None 2 : 0.22 μ F |

Shapes and Dimensions

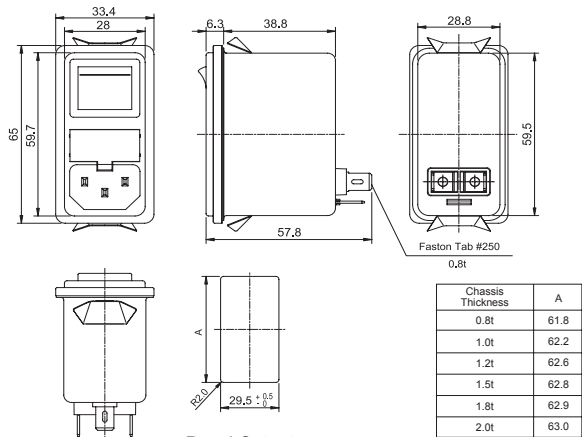
* RIP Series



* Panel Cutout dimension (mount from frontside)

* General tolerance : ± 0.5
 * Unit : mm
 * Metal Case

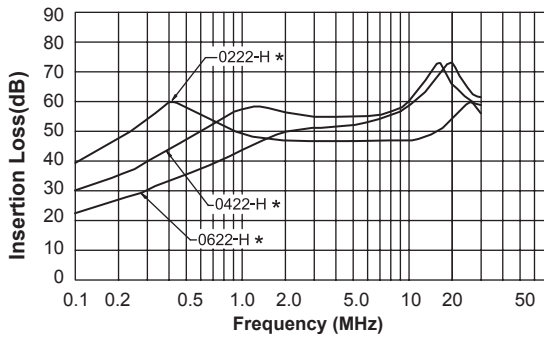
* RIQ Series



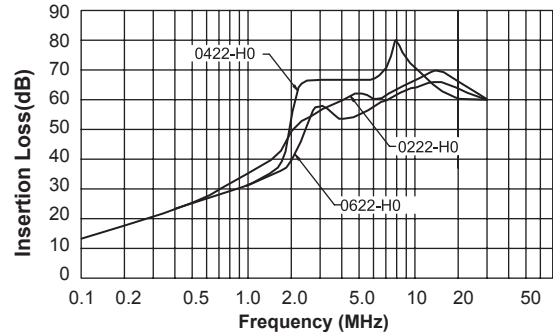
* Panel Cutout dimensions mounts from backside

Attenuation Characteristics

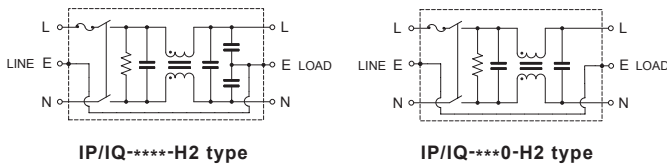
● Common Mode (IP/IQ-02/04/06*2-H*)



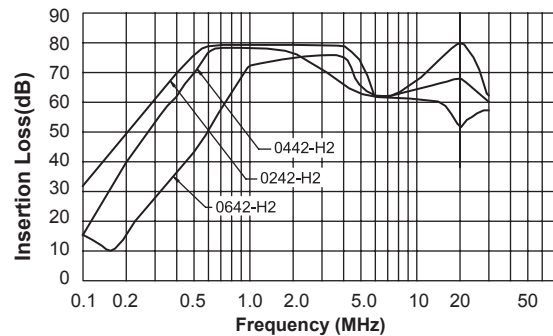
● Differential Mode (IP/IQ-***22-H0)



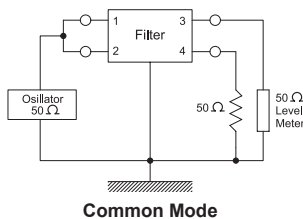
● Circuit Diagram



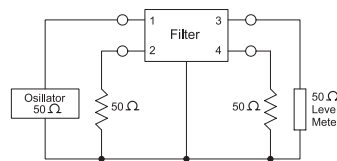
● Differential Mode (IP/IQ-***42-H2)



● Measurement configuration



Common Mode



Differential Mode