

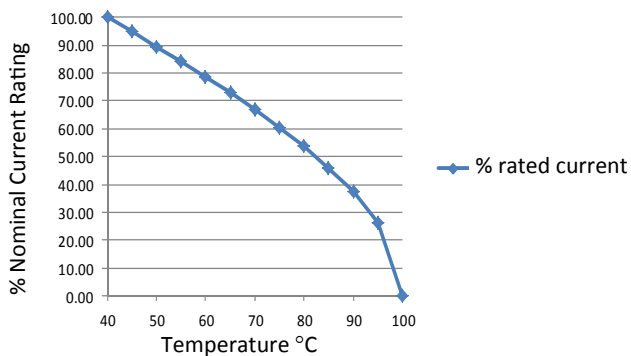
RES90 Chassis Mounted Filter

Very High Differential and Common Mode

Roxburgh's RES90 series is a multi-stage EMC filter with very high differential and common mode attenuation. Featuring excellent attenuation performance this series is suitable for noisy applications where increased filter performance is required.



**Temperature Derating Curve for EMC Filters
Rated at 40°C Ambient and 100°C Maximum**



Call us on:
Tel: +44 (0) 1724 273200

Features:

- Multi-stage
- Very high differential and common mode attenuation
- Excellent attenuation performance
- UL approved E191581
- For use from DC to 400Hz
- 1 Amp to 30 Amp

Benefits:

- Compact size for rated current
- Fast-on, screw or wire terminations
- Quick and Easy Mounting
- Available from UK Stock

Application Examples:

- Lighting
- Drives
- Electrical and electronic equipment
- Consumer goods
- Household equipment
- Building automation
- Machinery
- Electronic data/communication processing equipment
- Office automation

Full technical specifications enclosed

Performance Curves enclosed

Other options in this range on page 2

DEM Manufacturing

Deltron Emcon House
Hargreaves Way
Sawcliffe Industrial Park
Scunthorpe, North Lincolnshire.
DN15 8RF

ROXBURGH EMC



Tel: 44 (0) 1724 273200

Fax: 44 (0) 1724 280353




Email: sales@dem-uk.com

Web: www.dem-uk.com/roxburgh

RES90 Chassis Mounted Filter

Very High Differential and Common Mode

Options Available:

Part Number	Rated Current	Leakage Current @	Inductance	Capacitance	Capacitance	Resistance	Connection Type		
	@40°C	230V/50Hz	ΣL	ΣCx	ΣCy	ΣR			
	A	mA	mH	uF	nF	K Ω			
RES90F01	1	0.5	40	0.66	6.4	680	F	W	
RES90F03	3	0.5	28	0.99	6.4	470	F	W	
RES90F06	6	0.67	16	1.41	8.6	330	F	W	
RES90F10	10	0.67	16	1.41	8.6	330	F	W	
RES90F16	16	1.02	08	3.00	22	220	F	W	
RES90F20	20	1.02	5.4	3.00	22	220	F		
RES90S20	20	1.02	5.4	3.00	22	220			S
RES90S30	30	1.02	3.0	3.00	22	220			S

Call us on:

Tel: +44 (0) 1724 273200

DEM Manufacturing
 Deltron Emcon House
 Hargreaves Way
 Sawcliffe Industrial Park
 Scunthorpe, North Lincolnshire.
 DN15 8RF



Tel: 44 (0) 1724 273200

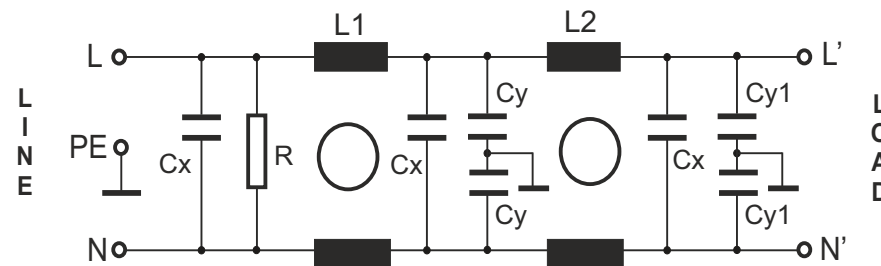
Fax: 44 (0) 1724 280353

Email: sales@dem-uk.com

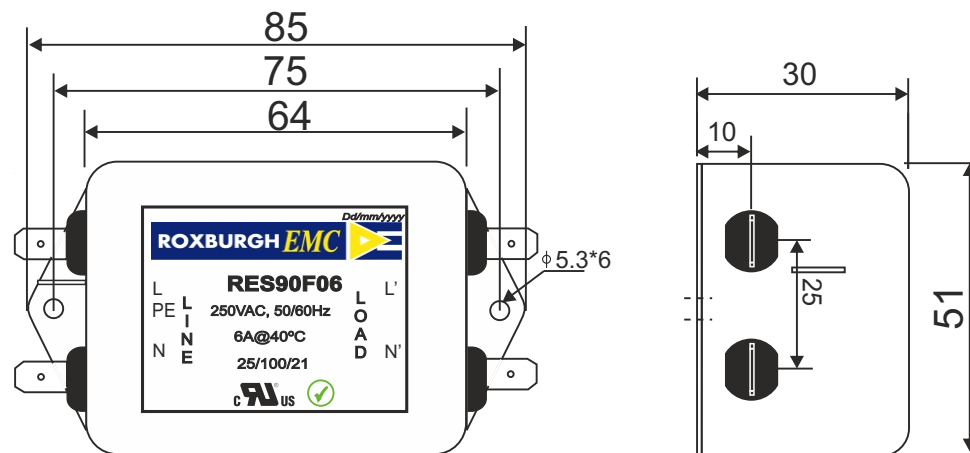
Web: www.dem-uk.com/roxburgh

RES90F06	Rev. 0
CHARACTERISTICS:	
Rated Voltage:	250VAC max
Rated Current at Ambient:	6A @ 40°C
Operating Frequency:	DC-400HZ
Climatic Class (IEC60068-1):	25/100/21
Temperature Range:	-25°C to +100°C
Over load Current:	1.5 x Rated Ct. for 1 Min
Operational Leakage current : (at 230VAC and Total C +/-20%)	0.67 mA max
Worst case Leakage current : (N interrupted and Total C +/-20%)	<1.34 mA max
DCR @ 25°C (+/-25%) :	100 mΩ
Test Voltage (100%) for 2 sec:-	P-P: 1100VDC
	P-GND: 3000VDC
Ingress Protection:	IP 20
Weight (approximate):	200 gr
FILTER PARAMETERS:	
Total Inductance (P-P'+N-N') @10KHz:	16mH +50%,-30%
Total Capacitance (P-P/P-N) @1KHz:	1.41μF +/- -20%
Total Capacitance (P/N-GND) @1KHz:	8.6nF +/- -20%
Total Resistance (P-P/P-N):	330K Ω +/- -10%
Total Resistance (P/N-GND):	
APPROVALS: REACH RoHS UL	APPROVED BY AJAY DATE:28-03-2014

CIRCUIT DIAGRAM:



MECHANICAL DIMENSION (mm):



Note:

Housing matl. Fe with Ni Plated
Fast-On Terminal (6.38 x 0.8mm)
Connections

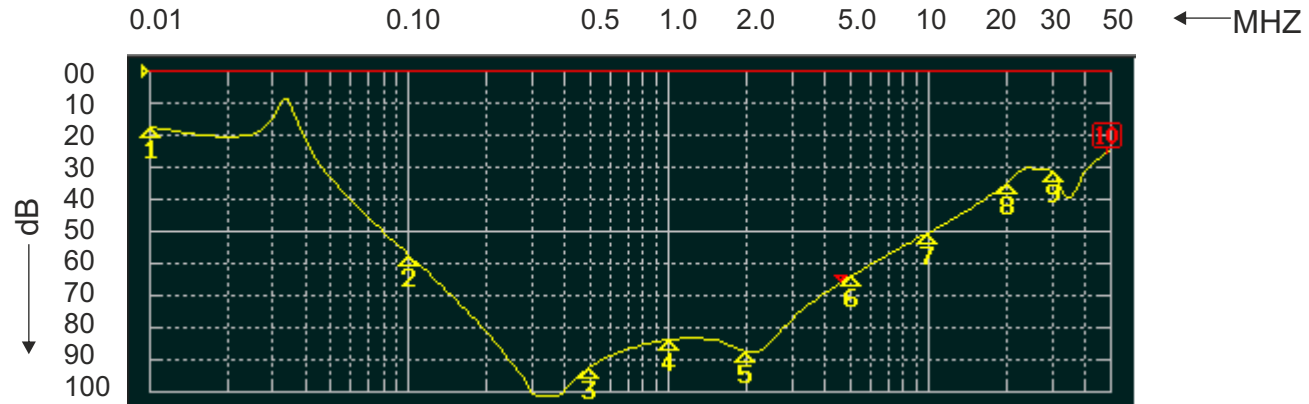
TOLERANCE: +/-1.0 mm



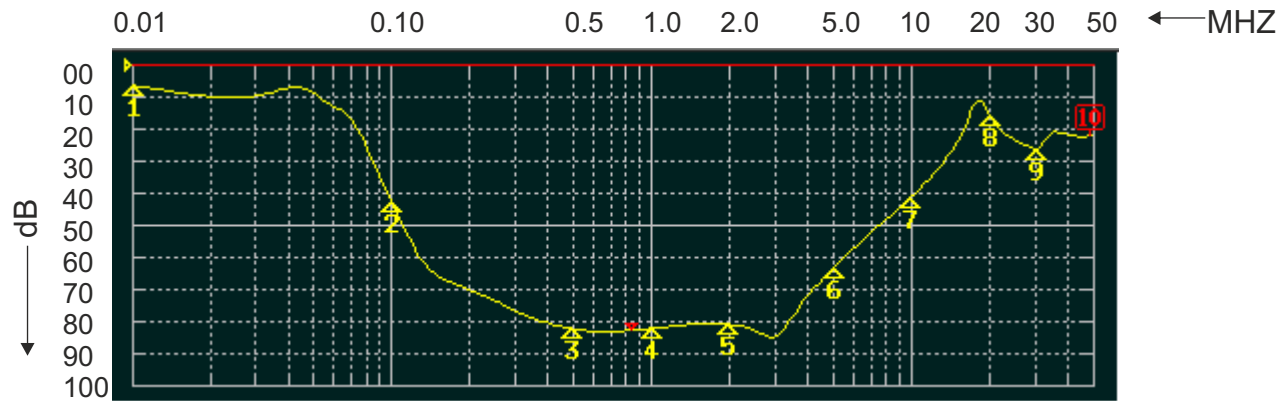
ROXBURGH EMC

FILTER INSERTION LOSS CHARACTERISTICS CISPR 17 - 50 OHM METHOD

RES90F06



COMMON MODE



DIFFERENTIAL MODE

