

RES70 Chassis Mounted Filter

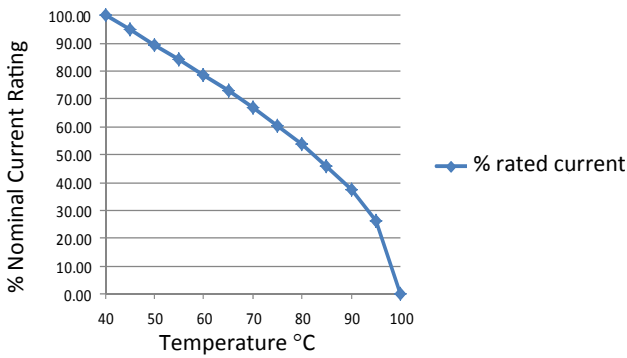
Multi-Stage, High Differential, High Common Mode and High Frequency

Roxburgh's RES70 series is a multi-stage EMC filter offering high differential mode, high common mode and high frequency attenuation.

Designed for quick and easy chassis mounting, these general purpose filters are suitable for a broad range of applications including noisy environments where increased filter performance is required.



Temperature Derating Curve for EMC Filters
Rated at 40°C Ambient and 100°C Maximum



Call us on:
Tel: +44 (0) 1724 273200

Features:

- Multi-stage
- High differential and high common mode attenuation
- High frequency attenuation
- UL approved E191581
- For use from DC to 400Hz
- 1 Amp to 36 Amp

Benefits:

- Compact size for rated current
- Fast-on, screw or wire terminations
- Quick and Easy Mounting
- Available from UK Stock

Application Examples:

- Lighting
- Drives
- Electrical and electronic equipment
- Consumer goods
- Household equipment
- Building automation
- Machinery
- Electronic data/communication processing equipment
- Office automation

Full technical specification on page 2

Performance Curves on page 3

Other options in this range on page 4

DEM Manufacturing

Deltron Emcon House
Hargreaves Way
Sawcliffe Industrial Park
Scunthorpe, North Lincolnshire.
DN15 8RF



Tel: 44 (0) 1724 273200

Fax: 44 (0) 1724 280353

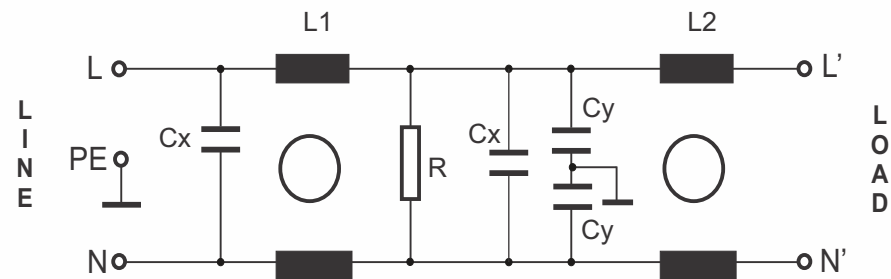
Email: sales@dem-uk.com

Web: www.dem-uk.com/roxburgh

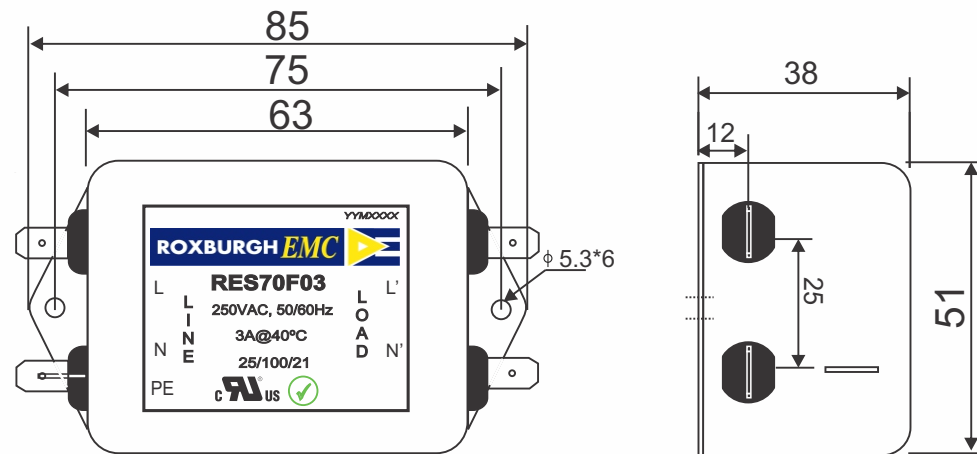
| RES70F03 | | Rev. 0 |
|---|--|---------|
| CHARACTERISTICS: | | |
| Rated Voltage: | 250VAC max | |
| Rated Current at Ambient: | 3A @ 40°C | |
| Operating Frequency: | DC-400HZ | |
| Climatic Class (IEC60068-1): | 25/100/21 | |
| Temperature Range: | -25°C to +100°C | |
| Over load Current: | 1.5 x Rated Ct. for 1 Min | |
| Operational Leakage current : (at 230VAC/50Hz and Total C +/-20%) | 0.734 mA max | |
| Worst case Leakage current : (N interrupted and Total C +/-20%) | <1.101 mA max | |
| DCR @ 25°C (+/-25%) : | 325 mΩ | |
| Test Voltage (100%) for 2 sec:- | L-N: | 1100VDC |
| | L-GND: | 3500VDC |
| Ingress Protection: | IP 20 | |
| Weight (Approximate): | 250 gr | |
| FILTER PARAMETERS: | | |
| Total Inductance (L-L'+N-N') @10KHz: | 19.6mH +50%,-30% | |
| Total Capacitance (L-L/L-N) @1KHz: | 0.94μF +/- -20% | |
| Total Capacitance (L/N-GND) @1KHz: | 9.4nF +/- 20% | |
| Total Resistance (L-L/L-N): | 0.47MΩ +/- -10% | |
| Total Resistance (L/N-GND): | | |
| APPROVALS: REACH RoHS UL | APPROVED BY AJAY Date: 28-03-2014 | |



CIRCUIT DIAGRAM:



MECHANICAL DIMENSION (mm):



Note:

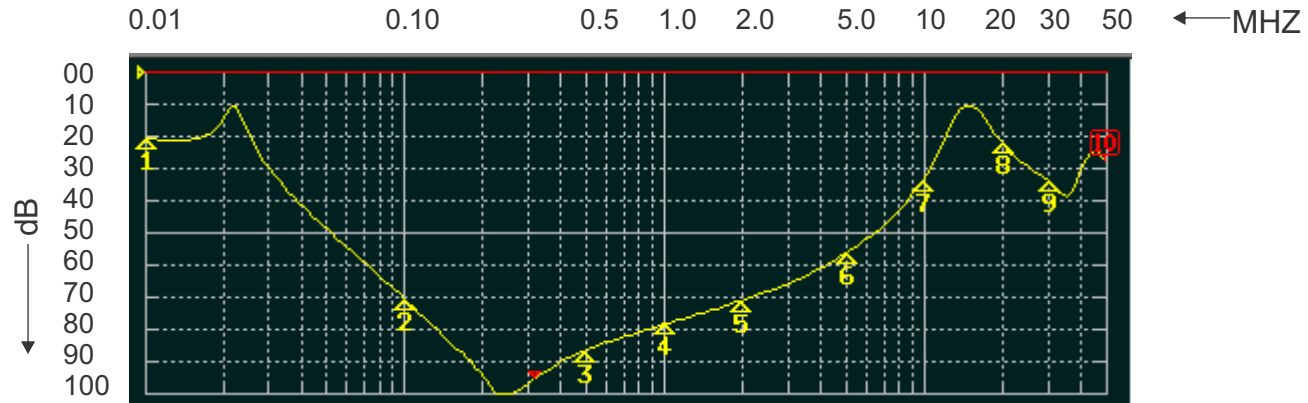
Housing matl. Fe with Ni Plated
Fast-On Terminal (6.3 x 0.8mm)
Connections

TOLERANCE: +/-1.0 mm

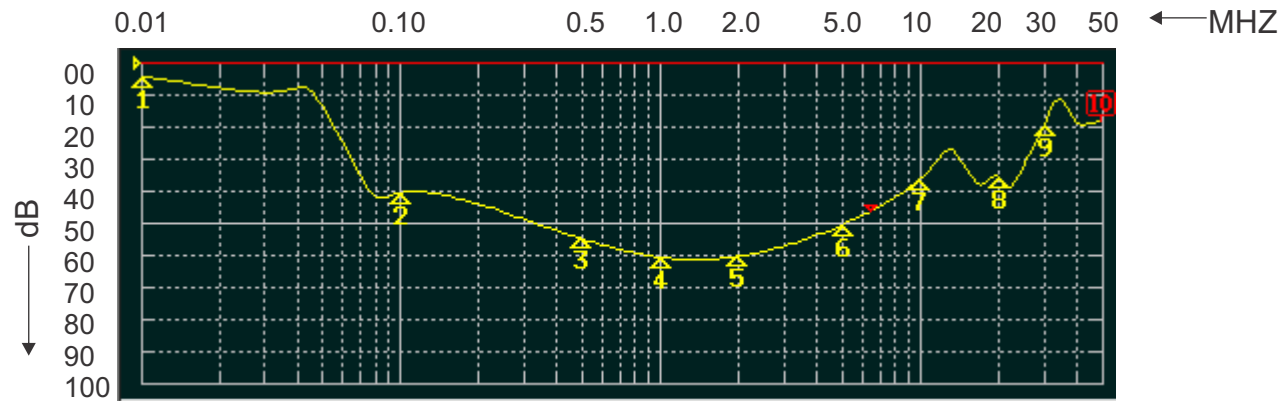


ROXBURGH EMC
FILTER INSERTION LOSS CHARACTERISTICS
CISPR 17 - 50 OHM METHOD

RES70F03



COMMON MODE






DIFFERENTIAL MODE



RES70 Chassis Mounted Filter

Multi-Stage, High Differential, High Common Mode and High Frequency

Options Available:

| Part Number | Rated Current @40°C A | Leakage Current @ 230V/50Hz mA | Inductance ΣL mH | Capacitance ΣCx uF | Capacitance ΣCy nF | Resistance ΣR K Ω | Connection Type | | |
|-------------|--------------------------|-----------------------------------|-----------------------------|-------------------------------|-------------------------------|-------------------------------------|---|---|---|
| RES70F01 | 1 | 0.73 | 44 | 0.66 | 9.4 | 1000 |  |  |  |
| RES70F03 | 3 | 0.73 | 19.6 | 0.94 | 9.4 | 470 | F | W | |
| RES70F06 | 6 | 0.73 | 15.6 | 2 | 9.4 | 220 | F | W | |
| RES70F10 | 10 | 0.73 | 9 | 2 | 9.4 | 220 | F | W | |
| RES70F12 | 12 | 0.73 | 6.5 | 2 | 9.4 | 220 | F | W | |
| RES70F16 | 16 | 0.73 | 3.6 | 2 | 9.4 | 220 | F | W | S |
| RES70S25 | 25 | 0.73 | 4 | 4.4 | 9.4 | 220 | | | S |
| RES70S36 | 36 | 0.86 | 2.46 | 4.4 | 9.4 | 220 | | | S |

Call us on:

Tel: +44 (0) 1724 273200

DEM Manufacturing
Deltron Emcon House
Hargreaves Way
Sawcliffe Industrial Park
Scunthorpe, North Lincolnshire.
DN15 8RF



Tel: 44 (0) 1724 273200
Fax: 44 (0) 1724 280353
Email: sales@dem-uk.com

Web: www.dem-uk.com/roxburgh